

Bowser

MANUFACTURERS & WHOLESALERS

BOWSER MFG. CO. INC., 21 HOWARD ST., P.O. BOX 322, MONTOURSVILLE, PA 17754-0322

A Bowser turntable requires a square hole in your layout 2" wider than the bridge length. Made of 1/2" plywood with a brass pit wall, it is painted gray, the pit rail is already laid and the wiring done. The center shaft, bearings and bogies are installed on the wooden bridge beam. Track and bridge details are NOT included.

BRIDGE DETAILS are separate kits of lead castings or may be made of stripwood.

MOTORIZING KIT (7900) is separate. The can motor with gearhead is made by Pittman, is easy to install with 3 screws and a nail and will fit any size Bowser turntable.

INDEXING KIT (7901) is separate. The stops are made by adding red GOW bulbs. It can have as many stops as you desire. Fits all Bowser turntables.

HO GAUGE TURNTABLES

89.95	7914	14" Bridge
91.95	7916	16" Bridge
94.95	7918	18" Bridge

O GAUGE TURNTABLES

95.95	7920	20" Bridge
96.95	7922	22" Bridge
117.95	7924	24" Bridge
117.95	7926*	26" Bridge
117.95	7928*	28" Bridge
121.95	7930*	30" Bridge
121.95	7932**	32" Bridge

S GAUGE TURNTABLES

95.95	7720	20" Bridge
96.95	7722	22" Bridge
117.95	7724	24" Bridge

N GAUGE TURNTABLES

78.95	7908	8" Bridge
79.95	7910	10" Bridge

LGB TURNTABLES

129.95	7950	20" Bridge*
131.95	7952	22" Bridge*
139.95	7954	24" Bridge*
147.95	7956	26" Bridge*

Use O Gauge Bridge Girder Kits

HO BRIDGE GIRDER KITS

12.95	7915	For 14" Bridge
13.95	7917	For 16" Bridge
14.95	7919	For 18" Bridge

O-S BRIDGE GIRDER KITS

14.95	7921	For 20" Bridge
14.95	7923	For 22" Bridge
15.95	7925	For 24" Bridge
16.95	7927	For 26" Bridge
17.95	7929	For 28" Bridge
18.95	7931	For 30" Bridge
19.95	7933	For 32" Bridge

MOTORIZING KIT

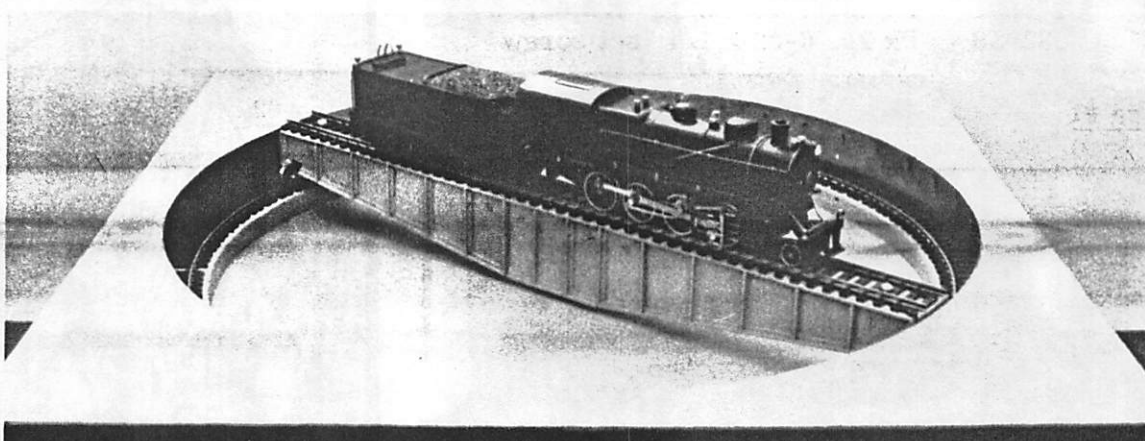
69.95	7900	For Bowser turntables
-------	------	-----------------------

INDEXING KIT

69.95	7901	For Bowser turntables
-------	------	-----------------------

N BRIDGE GIRDER KITS

8.95	7909	For 8" Bridge
9.95	7911	For 10" Bridge



* Order direct only - 26", 28", 30", 32"

+ 32" turntable can be shipped ONLY motor freight or bus COLLECT

MANUFACTURING CO.
21 HOWARD STREET
P. O. BOX 322
MONTOURSVILLE, PA. 17754

Fasten support bracket (79334) to motor, using the two 4-40 x 3/16" RH screws (440031), and being sure leg is bent up from motor. See Picture #1.

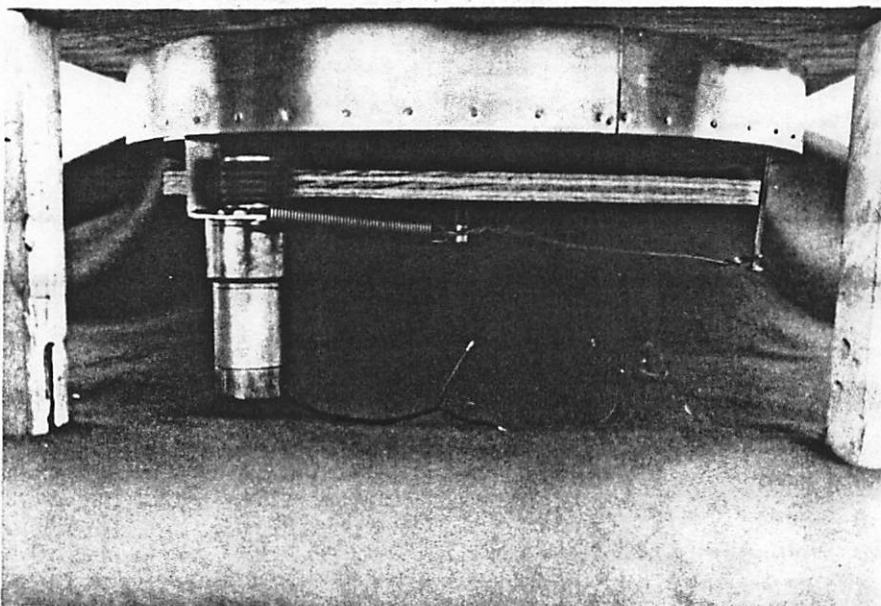
Slip drive-drum (79331) onto motor shaft and fasten in place, using 6-32 x 1/4" set screw (632039). Be sure set screw clamps on flat surface of motor shaft. Put five O-rings (79333) onto drive-drum. Hook one end of spring (79335) through hole in motor bracket.

Drill a small lead hole in turntable bottom 5/16" from pit wall. See Picture #2. Using 4 x 1/2" wood screw (79363) fasten motor bracket to turntable. Assuming this hole is at 12 o'clock, drill a small hole at 3 o'clock, 5/16" from edge of pit wall. Drive 8-penny nail (79369) into this hole. DON'T GO TOO FAR or you will break through. Connect spring to nail with a piece of wire (not supplied). The spring should pull to 2-3/4" long, not counting the end loops, when locked into place.

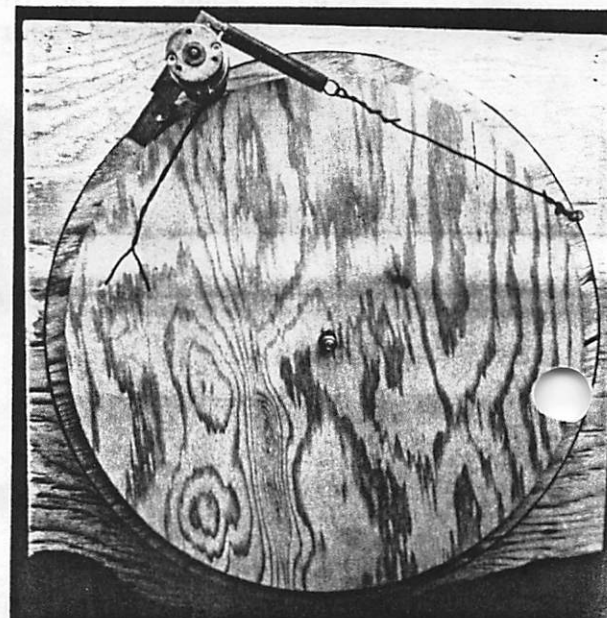
Adjust wood drive wheel to ride in middle of the five O-rings. Hook motor lead wires to any 12 volt DC power pack. A momentary contact switch in the circuit will help move bridge to exact position required. The motor is very sensitive, so a short burst of power is all that is needed to move the table.

Price	Part #	Description	Quantity in kit
	79331	Drive-drum for turntable	1
	79332	Motor for turntable drive	1
	79333	O-ring for turntable drive	5
	79334	Support bracket for turntable drive motor	1
	79335	Spring for turntable drive	1
	79363	Pk. 10, #4 x 1/2" wood screw	1
	79369	8-penny nail	1
	440031	Pk 10, 4-40 x 3/16" RH screw	2
	632039	Pk 10, 6-32 x 1/4" set screw	1

Picture #1

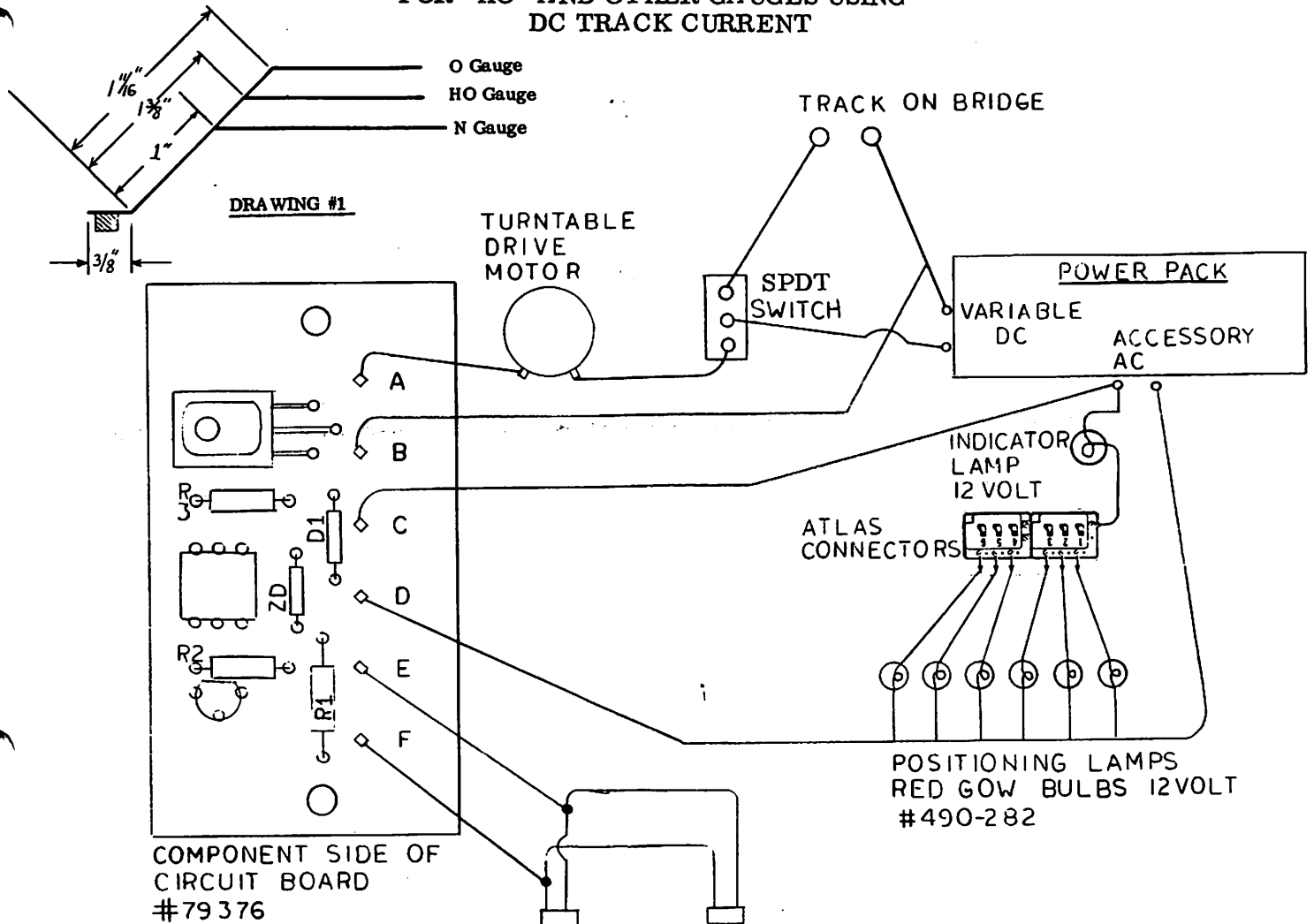


Picture #2



INDEXING KIT

FOR "HO" AND OTHER GAUGES USING
DC TRACK CURRENT



PHOTOCELLS #79377
CONNECTED IN PARALLEL

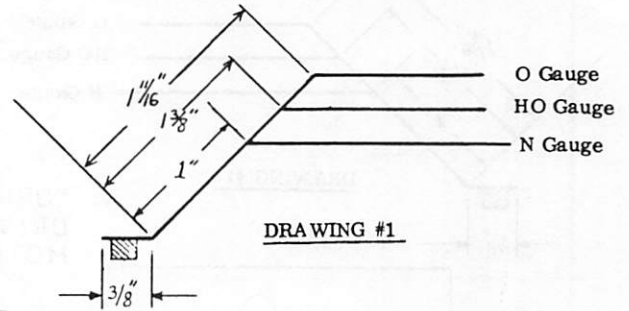
Repair Parts

2605	Pk. 12 screws, 0 x 5/32" Panhead, self-tapping
79001	Allen wrench, #4 set screw
79002	Allen wrench, #6 set screw
79131	'N' gauge bogle assembly
79132	'HO' gauge bogle assembly
79134	'HO' pivot shaft
79210	'N' bridge bushing
79211	Short turntable bushing for pit
79212	Long turntable bushing for drive wheel
79213	Turntable bushing, 'HO' & 'O' bridge
79232	'O' gauge bogle
79234	'O' pivot shaft
79330	Set collar, 5/16"
79331	Drive wheel less O rings for motor
79332	Motor only
79333	O rings for turntable drive wheel
79334	Turntable motor bracket
79335	Spring for drive
79363	Pk. 10 screws, #4 x 1/2" round head
79364	Pk. 20 screws, 2 x 1/2" wood
79369	8 penny nail
79371	Flat brass washer
79373	Brush assembly, indexing kit
79375	Eye guide assembly, indexing kit
79376	Circuit board only
79377	Light sensor
79378	Shlm brass, 1/2" x 6" x .010
79379	Wood screw, #2 x 3/8"
79380	Insulating tubing, 5"
440031	Pk. 12 screws, 4-40 x 3/16" round head
632039	Pk. 10 screws, 6-32 x 3/16" socket head set

INDEXING KIT

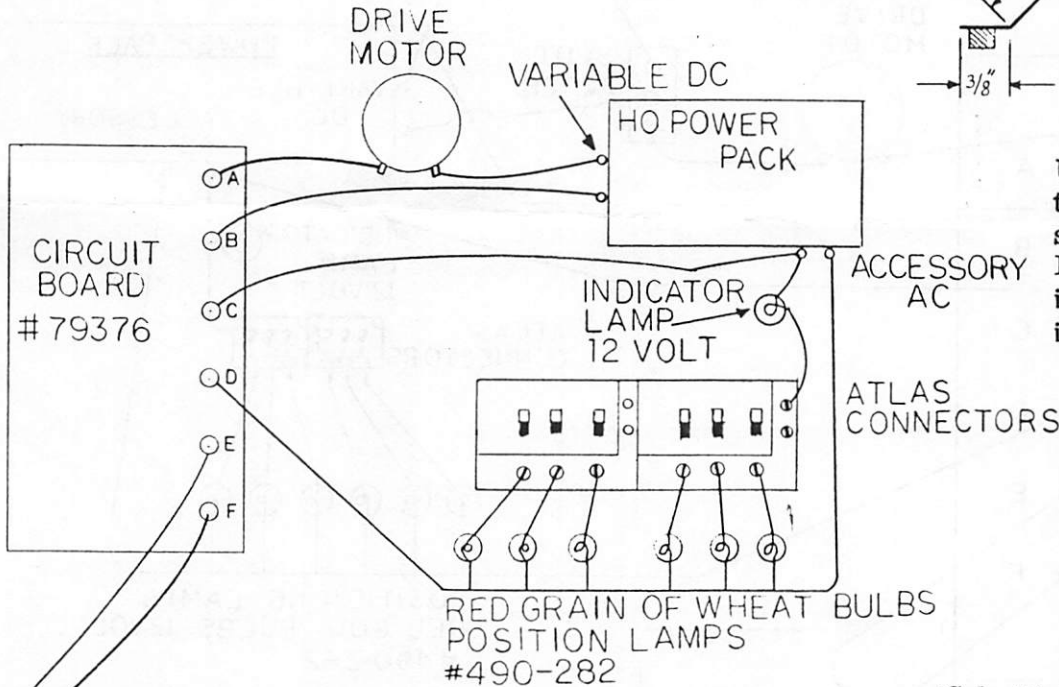
FOR "O", "S" AND OTHER GAUGES USING AC TRACK CURRENT

THE TWO WIRES FROM THE RING RAIL IN BOTTOM OF PIT ARE TO GO TO LIONÉL OR OTHER TYPE OF TRANSFORMER THAT CONTROL YOUR MAIN LINE



DRAWING #1

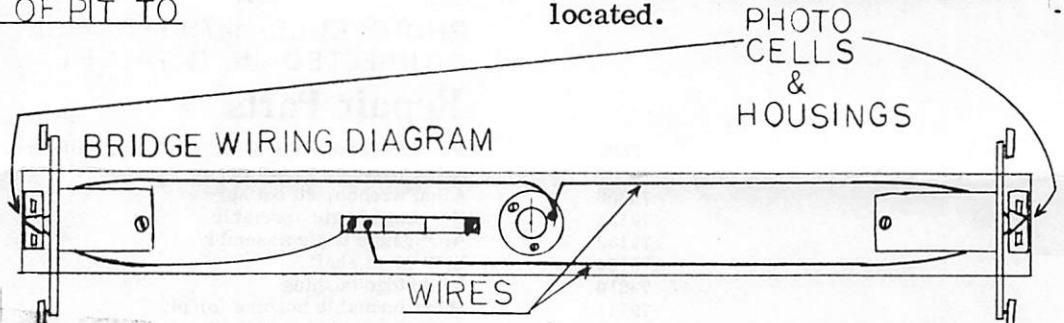
Use any DC powerpack, but a transistorized throttle will give smoother operation. Pulse power does not work with indexing but works well when indexing is NOT used.



THROUGH BOTTOM OF PIT TO SCREW HOLDING BUSHING IN PIT

THROUGH BOTTOM OF PIT TO BRASS WASHER

Substitute a light bulb for motor when testing bridge to be sure photo cell housings are properly located.



"X" wires go to ring rail & "E&F" wires to brass washer & pit bushing.

Detail of grooves for wires going to photo cells.

View of "E&F" wires coming up through floor of pit next to center bushing.

