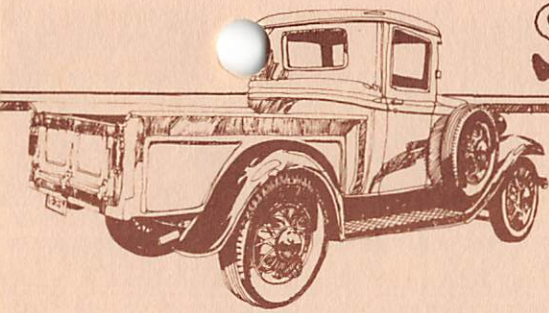
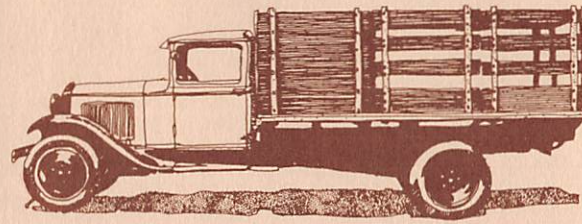


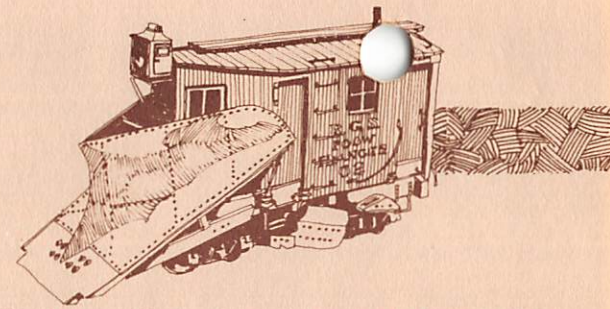
# S&Sn3 Catalog



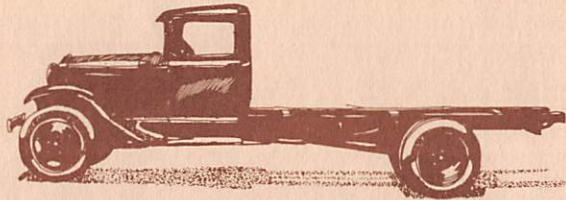
**CMS-101 1934 FORD PICKUP:**  
ALL WHITE METAL KIT. CLEAR PLASTIC WINDSHIELD AND HEADLIGHT LENSES. FLATHEAD V-8 MOTOR INCLUDED. \$14.95



**CMS-107 FORD STAKE TRUCK:**  
WHITE METAL AND INJECTED PLASTIC KIT. INJECTED BED AND STAKES. CLEAR PLASTIC WINDSHIELD AND HEADLIGHT LENSES. FLATHEAD V-8 INCLUDED. \$16.95



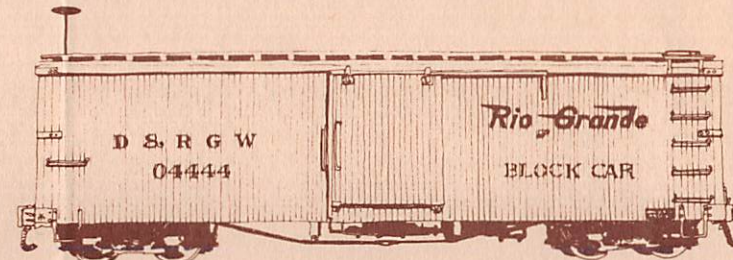
**CMS-106 R.G.S. 02 PLOW FLANGER:**  
STYRENE AND WHITE METAL KIT. ALL WALLS AND WINDOWS PRE-CUT FROM EVERGREEN STYRENE. WINDOWS, FRONT WALLS, DETAIL PARTS INJECTION MOLDED. ALL PARTS WITH NUTS AND BOLTS ARE CAST IN THE PARTS. ALL GRABIRONS ARE CAST. GRANDT WHEELS INCLUDED. LIMITED RUN OF 150. \$59.95



**CMS-102 1934 FORD AA CHASSIS:**  
ALL WHITE METAL KIT. CLEAR PLASTIC WINDSHIELD AND HEADLIGHT LENSES. FLATHEAD V-8 MOTOR INCLUDED. GREAT FOR FREELANCING YOUR OWN BACKEND. \$14.95

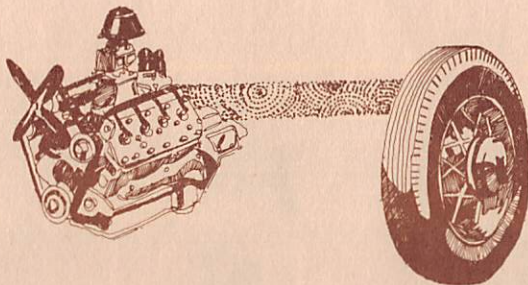


**CMS-108 D&RGW 4000 SERIES BOX CAR:**  
STYRENE AND WHITE METAL KIT. ALL BODY PARTS ARE PRE-CUT STYRENE. DETAIL PARTS IN STYRENE AND WHITE METAL, INCLUDING CAST GRABIRONS. TRUCKS INCLUDED. \$34.95

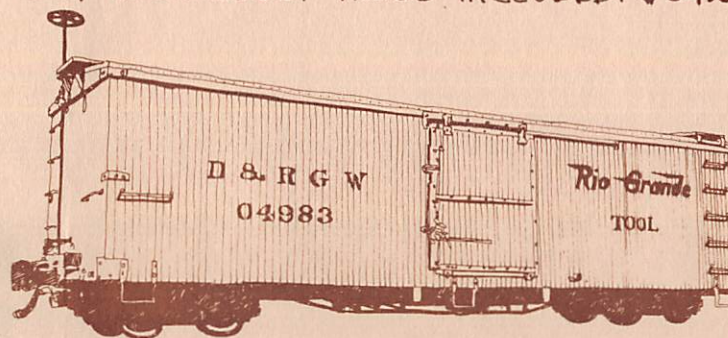


**CMS-109 D&RGW #0444 BLOCK CAR:**  
THIS KIT IS BASICALLY SAME AS THE 4000 BOX CAR EXCEPT FOR ADDED DETAILS AND BLACK DECALS FOR THIS WORK CAR. \$34.95

**CMS-103 FORD FLATHEAD V-8:**  
WHITE METAL DETAIL PART. COMES TWO TO A PACKAGE. \$1.75



**CMS-104 FORD WIRE WHEELS:**  
WHITE METAL DETAIL PART. COMES FIVE TO A PACKAGE. \$1.75



**CMS-110 D&RGW TOOL CAR:**  
THIS KIT SAME AS 4000 BOX CAR EXCEPT FOR ADDED DETAILS AND BLACK DECALS FOR THIS WORK CAR. \$34.95



**CMS-111 D&RGW #04268 KITCHEN CAR:**  
ALL BODY PARTS ARE PRE-CUT, INCLUDING WINDOWS. ALL DETAIL PART AND DECALS FOR THIS CAR ARE INCLUDED. HISTORY HAS IT THAT THE LITTLE HOUSE ON THE ROOF WAS USED TO KEEP LIVE CHICKENS FOR THE CREWS DINNER. \$34.95

**CMS-105 FORD SOLID WHEELS:**  
WHITE METAL DETAIL PART. COMES SIX TO A PACKAGE. \$1.75



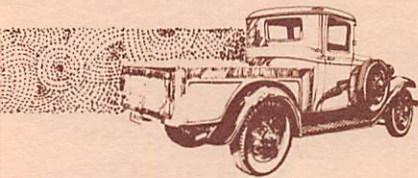
**CMS-112 ENGINE CLEANUP KIT:**  
WHITE METAL AND WIRE DETAIL KIT. INCLUDES BROOM, SHOVEL, WATER BAG, AND RAKE. \$2.95



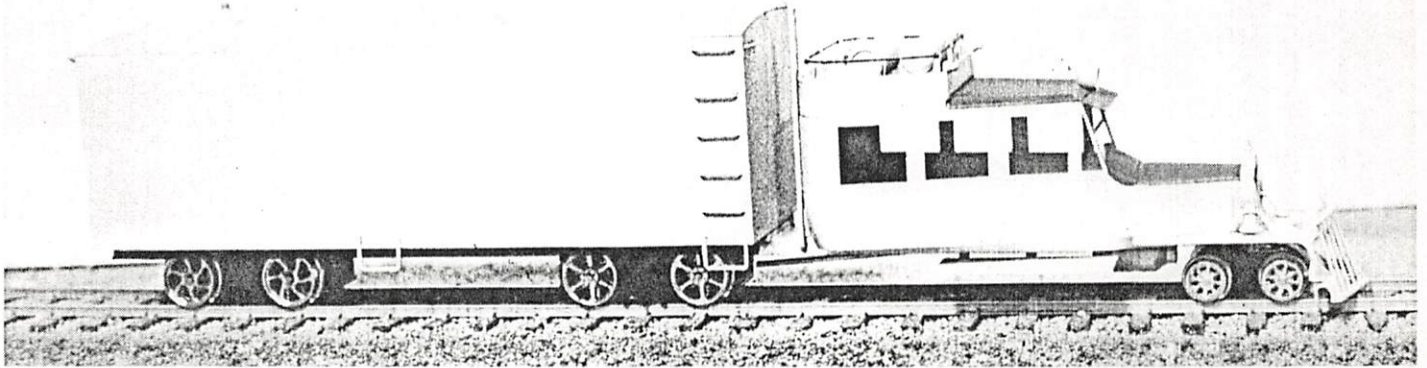
**CHAMA**

MODEL SHOP & GALLERY  
P.O. BOX 856, CHAMA, NM 87520

---



To:



**3-TRUCK GOOSE.** Pacific Fast Mail, PO Box 57, Edmonds, WA 98020. Price: \$229.95

One of the minor pieces of motive power that most of us narrow gaugers desperately want for our layouts is a copy of one of the famous Rio Grande Southern "Galloping Goose" flock. During the Great Depression the Rio Grande Southern was cut loose (one could even say abandoned) by its unforgiving parent, the Denver and Rio Grande Western as not worth the repair necessary to get it back together, so as to milk more profit from it. Receiver Victor Miller had the job of trying to put it together with spit and baling wire and keep it running. He succeeded as we all know, holding it together from 1929 to 1952.

One of the ways he succeeded was to have his "Master Maniac" Jack Odenbaugh develop the idea of a rebuilt rail-auto inspection car into a self-propelled, one man LCL (less than carload) freight,

mail, express and passenger vehicle that would carry all the load there was to be carried. The RGS solution was the series of seven geese, plus a duplicate built for the San Cristobal Railroad, all built from June 1931 to October 1936. No two were exactly alike, nor did they stay the same from year to year. Parts wore out and the ICC made the road rebuild them for greater safety from time to time.

They were built on a basis of shopping used car lots or junk yards for parts, cut, bash and file to fit, and paint to hide. Miller got many requests from other poor railroads in the Depression on how to build a goose. There were no plans, so he gave general descriptions of how they were built. Originally called "Motors," late unofficially buses, the term "Galloping Goose" was given them by some unsung genius, eventually became official and was even stolen by other roads for their own creations. They wobbled and waddled down the track, with honking air

horn and all parts flying in close formation.

By December 1931, only six months after the first goose was built, #3 the first 3-truck goose, was finished and the pattern was set. Nos. 3, 4, 5 and 7 were more or less alike and were built from Pierce-Arrow model 33 or 36 4-door limousines with a longer car body and three trucks. Originally with the typical "frog-eye" Pierce Arrow front fenders, 3 and 4 lost them in 1941 and 5 lost these fancy fenders during WWII. No. 7 was built in October, 1936, and may never have had the fenders. They were certainly gone by 1939. Right from the start this goose had a Ford V-8 engine rather than the Pierce Arrow motor.

Pacific Fast Mail has introduced the 3-truck Galloping Goose in Sn3. PFM says it has modeled the #7 Goose. PFM's Goose represents the machine before it was rebuilt for hauling strictly summer tourists.

The model measures 8 1/8" long, and approximately 1 3/8" wide. The mail/baggage/freight section measures 4 1/2" long. The Goose comes factory-painted in silver, with black cab roof and black hood. The cab and freight section are connected by a single metal screw which allows the cab to pivot. The middle set of trucks is the one powered truck, containing the truck-mounted motor.

The goose details include air tanks on top of the cab roof, motor exhaust pipe behind the cab, vent and light at the rear exterior of the freight section, front grille (not snowplow), bell on each side of the cab attached underneath the headlights, a third light in the center of the cab, wire around the luggage racks atop the cab, and steps beneath the freight section doors on either side.

This three-truck Goose should appeal to narrow gaugers who need a simple piece of rolling stock to run both freight/passenger service, just like on the prototype. *Bob Sloan and Don Heimburger*

## S SCALE 1934 FORD STAKE BED

**CMS-107**  
**\$16.95**  
PLEASE ADD \$2.50 POSTAGE

**CHAMA**  
MODEL SHOP & GALLERY

This fine addition to your S scale layout will have an injected plastic stakebed, this will go with our all white metal AA chassis. Don't forget our Ford pickup, CMS-101 @ \$14.95.  
BUILT UPS: We will do finished truck models for \$50.00 each. Please specify weathered, clean, hood on or off, etc.

WE ACCEPT MASTER CARD & VISA.  
P.O. BOX 856, CHAMA, NM 87520