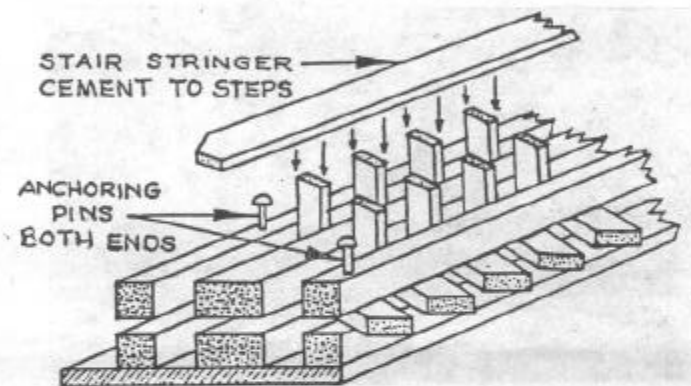


## WELCOME TO S GAUGE

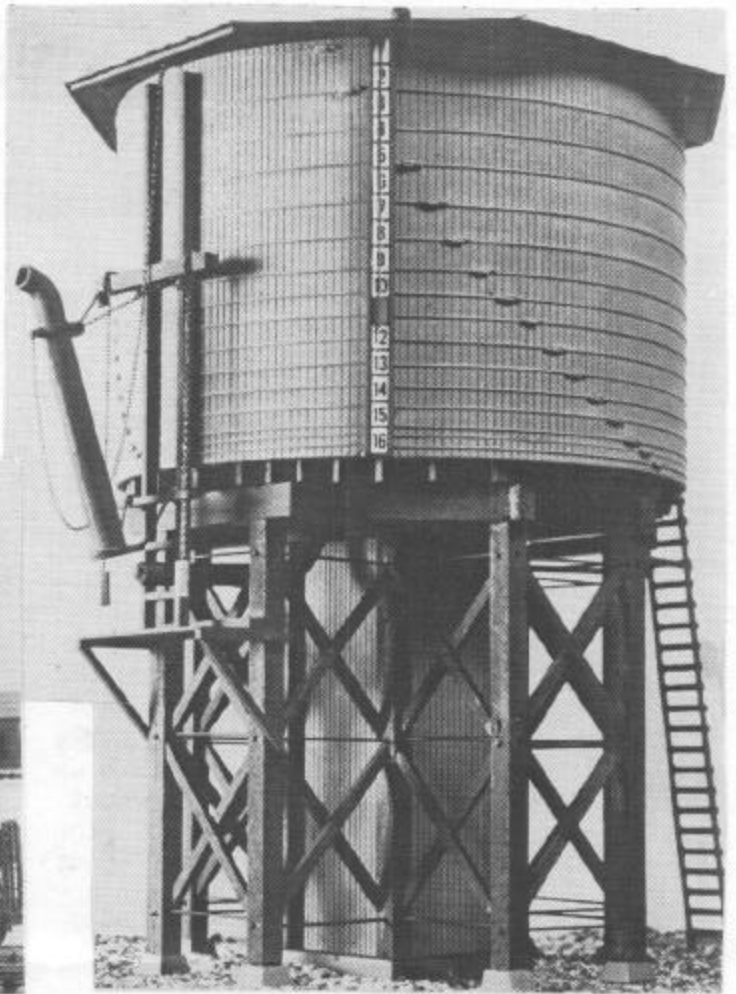
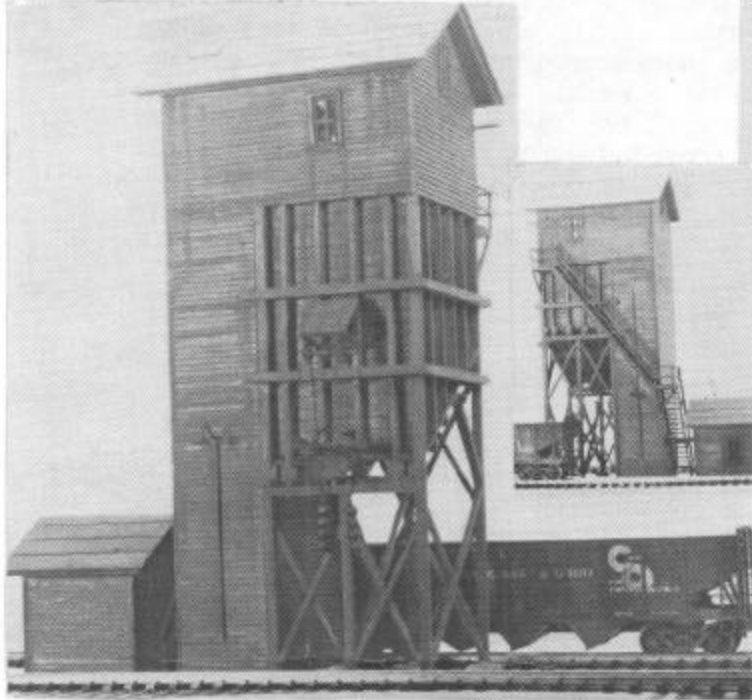
We believe that every model railroad must have scenery, buildings, and all the little details necessary to make it appear realistic. Lehigh Valley Models has produced a number of buildings and other railroad related details to help create that realism. You will find the instruction sheets for LVM products full of step by step drawings, and wherever possible, all parts are precut to size or length to make for easy assembly with the least amount of work. All items needed to complete the models are included with the exception of paint and glues. Now you can order a kit built up and completed. Send your order in prepaid plus postage along with your phone number in case we must reach you for some reason.

LVM00 - STAIR JIG - This wood and cardstock jig is very simple to assemble and is needed to make the stairs in LVM3, LVM14, LVM26 and LVM27. These are all marked with an asterisk (\*) on the separate price sheet. Save this jig for use with any one of the above kits or for building stairs for your own model. The kit does not contain any stair parts but will enable you to assemble stairs of any length.



LVM1 - BRANCHLINE STATION - This kit builds a compact branchline station that has everything. A shingle roof, cast double hung windows, a cast doorway into the ticket office, a freight platform and cast freight door, and a cast chimney to make it attractive and easy to build. Seven different station names are supplied. This station only occupies an area 6" x 8" including the roof overhang and the price is right!

LVM2 - 50,000 GALLON WATER TANK - A highly detailed wooden water tank found on all railroads. This kit makes a high or low tower for S or Sn3. The unique method of applying tank bands simplifies assembly and prevents them from dropping down due to temperature changes. Both plastic and metal castings make this into a beautiful model. It occupies a 5" square area.



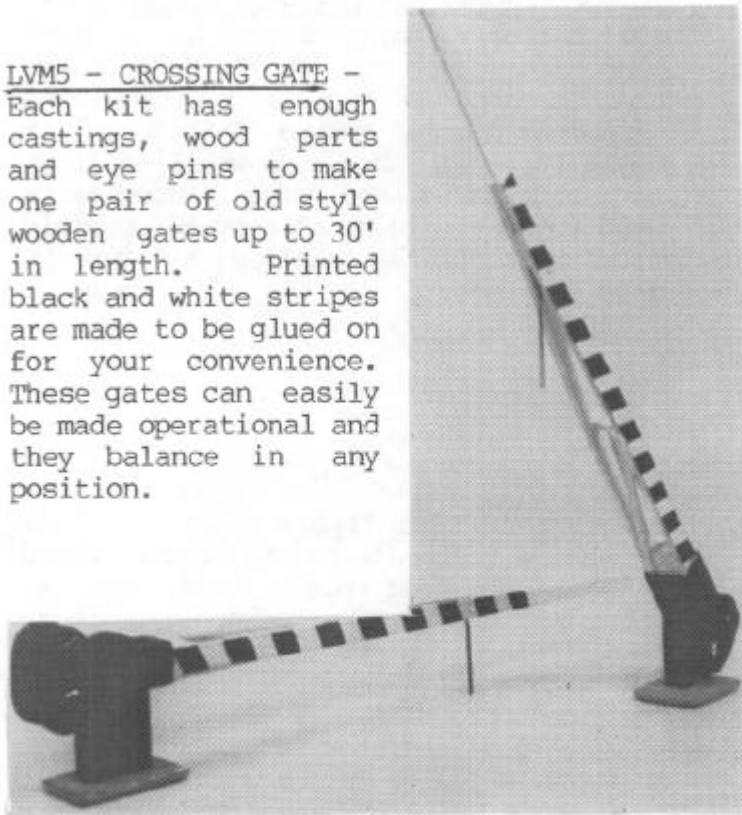
LVM3 - 100 TON WOODEN COALING STATION - For mainline, branchline, or small engine terminal. Fits into a 3 1/2" x 7" area. Northeastern wood parts, metal window castings, and very thorough instructions with many drawings make this nicely detailed kit easy to build. Give your hopper cars a perfect destination. You will need an LVM00 STAIR JIG if you do not have one.

LVM4 - ANGELO BOVA - This trackside cinderblock build-handles wholesale produce and sells to smaller markets and grocers. A good destination for your reefers and express reefers. Two freight doors on the one side and a door in front for unloading and loading cars and trucks. Trucks load at the platform in front. Building occupies an area 4" x 12 1/4". It has a refrigeration unit located on the flat roof. A tapered tin roof with rain gutters and downspouts covers the rest of the building. All parts are precut wherever possible making for easy construction.

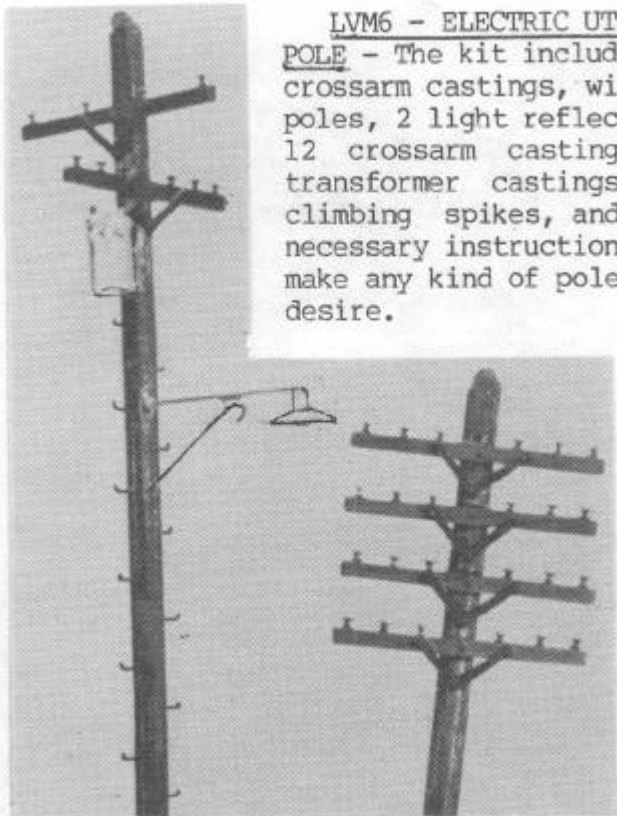


LVM5 - CROSSING GATE -

Each kit has enough castings, wood parts and eye pins to make one pair of old style wooden gates up to 30' in length. Printed black and white stripes are made to be glued on for your convenience. These gates can easily be made operational and they balance in any position.



LVM6 - ELECTRIC UTILITY POLE - The kit includes 12 crossarm castings, wire, 6 poles, 2 light reflectors, 12 crossarm castings, 2 transformer castings, 12 climbing spikes, and the necessary instructions to make any kind of pole you desire.



LVM7 - CONTINENTAL CANNING CO.

This is a brand new Canning Company. It is "L" shaped, stands 8 1/4" high, occupies an area 12" x 16", and can be used with one track into the building and a truck loading platform as shown, or with a short track paved over alongside the truck platform for

trucks to load and unload. This is a brick and concrete building with modular type construction. There is a large watertank on the roof. There are several colorful signs to choose from. Continental canning Co. (red, white, and blue); Coca Cola (red and white); Corrugated Box Co. (Green and yellow); and Toledo Tires (Yellow, orange, and black). There is a corrugated platform roof above a concrete loading platform. All parts precut wherever possible. A good destination for reefers, stock cars, and boxcars.

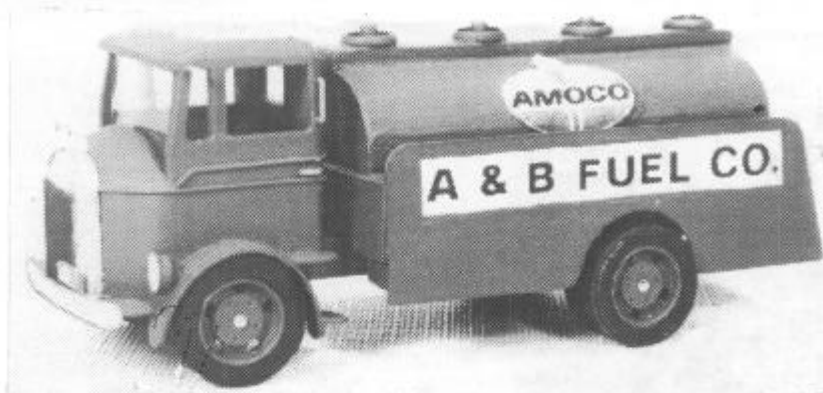




LVM8-C - MACK COAL DELIVERY TRUCK - This 1934 cab over engine truck is a good companion piece to the J. Harry Jones Coal Co. and is typical of those seen when most people burned Anthracite in their furnaces. Die cast wheels, printed card parts, and precut wood parts help to make this model easy to assemble from instructions loaded with step by step drawings.



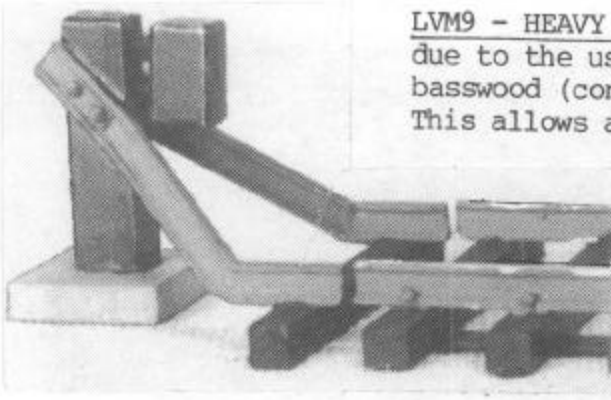
LVM8-L - MACK LUMBER TRUCK - This has a flatbed with side racks which can be used for lumber, barrels, pipe, or any other commodity. These little truck models are supplied with a unique method for making a good resemblance of the famous Mack bulldog radiator ornament. Signs are supplied or you can use your own.



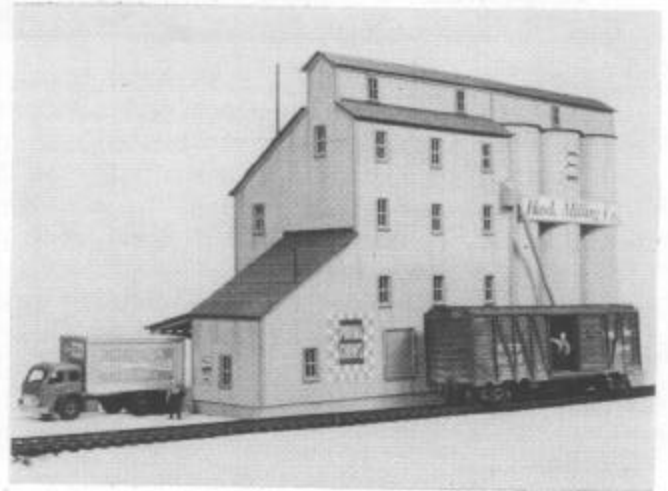
LVM8-T - MACK FUEL OIL TRUCK - This is a typical tank truck of the 30's and 40's era. These cab frame units can be used with any type body the model builder desires to make. This particular truck would fit in well with the bulk oil depot (LVM28).

LVM8-I BUD ICE TRUCK - Whenever it was not convenient to haul a few reefers to an icing facility, an ice truck brought the ice to the reefer. Kit builds a 1934 Mack with an actual moving scissor type body. If desired the body could be installed upon another truck of your choice (Hartoy) Five blocks of ice come with kit.



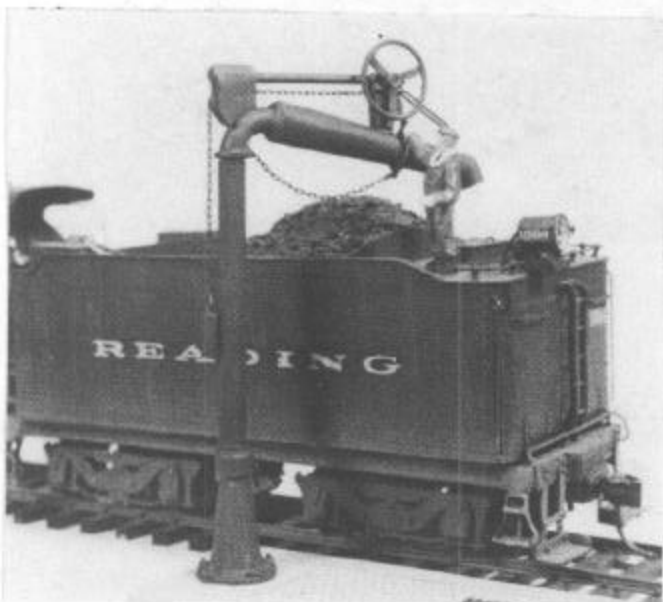


LVM9 - HEAVY DUTY TRACK BUMPER - This is very easy to assemble due to the use of only three castings and separate Northeastern basswood (concrete) base and tie to add for 1/8" track height. This allows adjustment to any track level by simply using the proper base and tie thickness. Painting and assembly instructions are included. There are three bumpers to one kit.



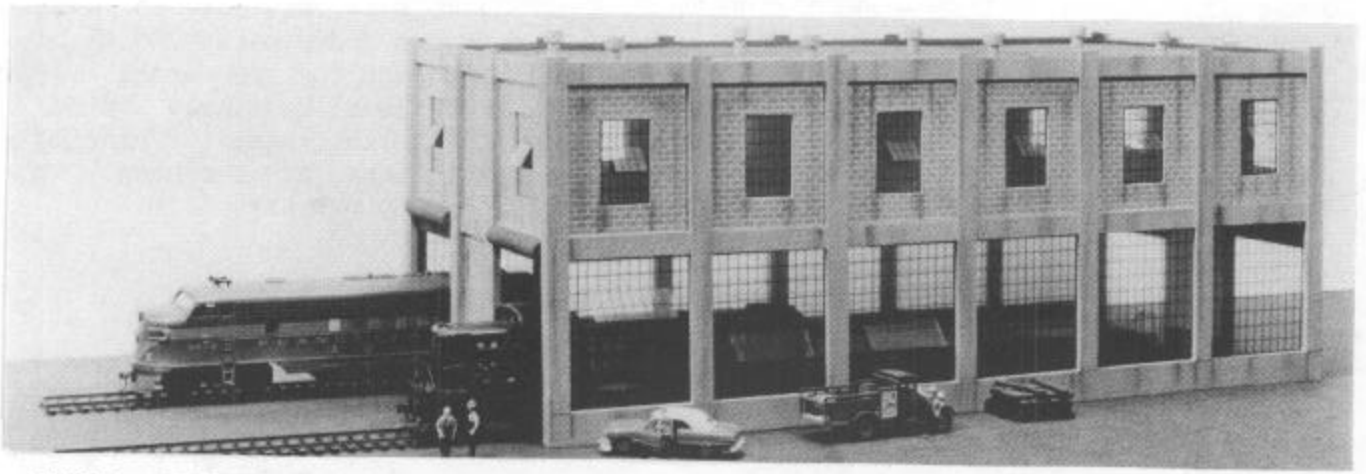
LVM10 - HAWK MILLING CO. - Unlike the towering grain storage silos typical of the midwest, this building can be found along almost any siding in a small town or village, or on the outskirts of a large metropolis. The prototype received various grains by boxcar or covered hopper which was stored in the silos and processed to mixes for use on the farm or in homes which was packaged and hauled away by truck or boxcar.

Model takes a space 5 1/2" x 17". A sheet of colorful printed signs comes with this kit. Most of the parts are precut to size for easy assembly. There are 31 window, two door, and two large loading door castings supplied. Give those airflow hoppers and your boxcars a destination to be assigned to.



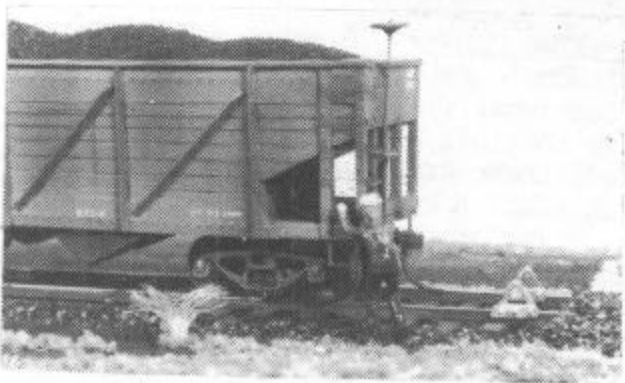
SEE  
SEPARATE  
SHEET  
FOR  
PRICES

LVM11 - WATER COLUMN - This is a model of the U.S. Telescopic Water Column made up of three pewter castings....a spout and its support, the valve shut off wheel, and a base. When assembled, these are mounted on a brick and cement foundation containing a drainage and grating. The spout can be swiveled out over a locomotive tender. Easy to construct.



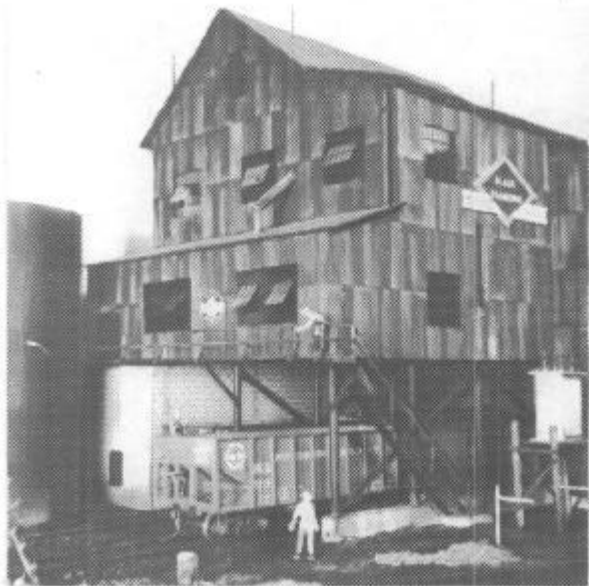
LVMI2 - ENGINE HOUSE - We have brought back a bigger, better, loco house. This 21 1/2" long cinder block and concrete building can be a diesel house, a locomotive works (see photo below), a car repair facility, or even a factory, depending upon your desires. It is 10" wide, has 5 1/2" track centers (for use with AF) and stands 8 5/8" high. The four door openings measure 4 1/4" high by 3" wide. There is a 17" long work platform inside between the two tracks with steps on each end.

It is constructed of Northeast precut wood, cardstock, printed cinder block, and printed transparent windows.



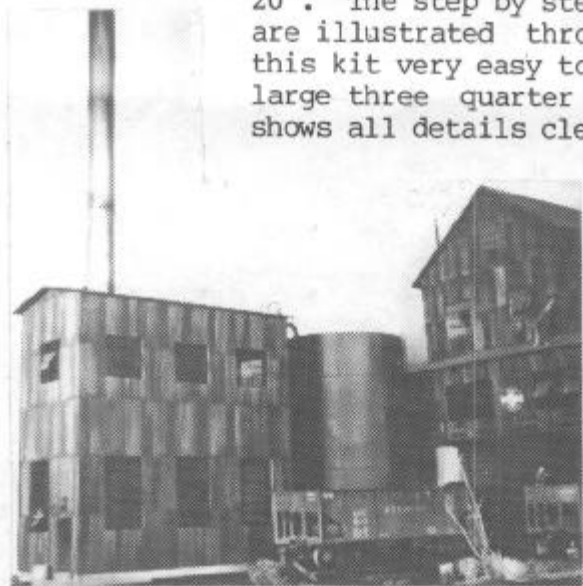
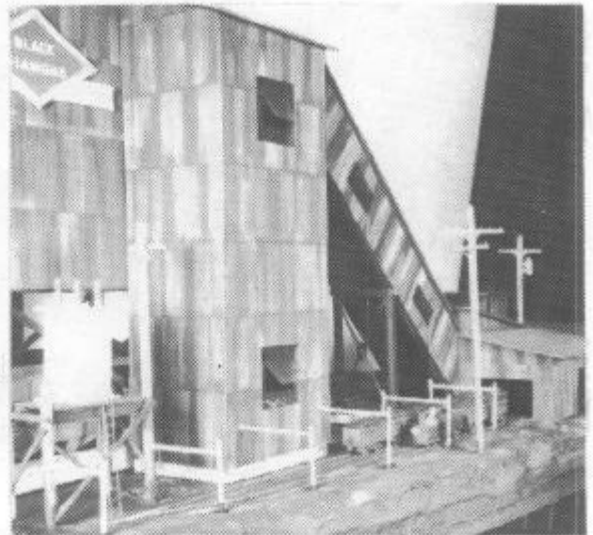
LVMI3 - CAST CAR STOPS - Just like the real thing to prevent those wheels from rolling off the end of your sidings. Detailed metal castings which simply glue to code 100 or 125 rail.





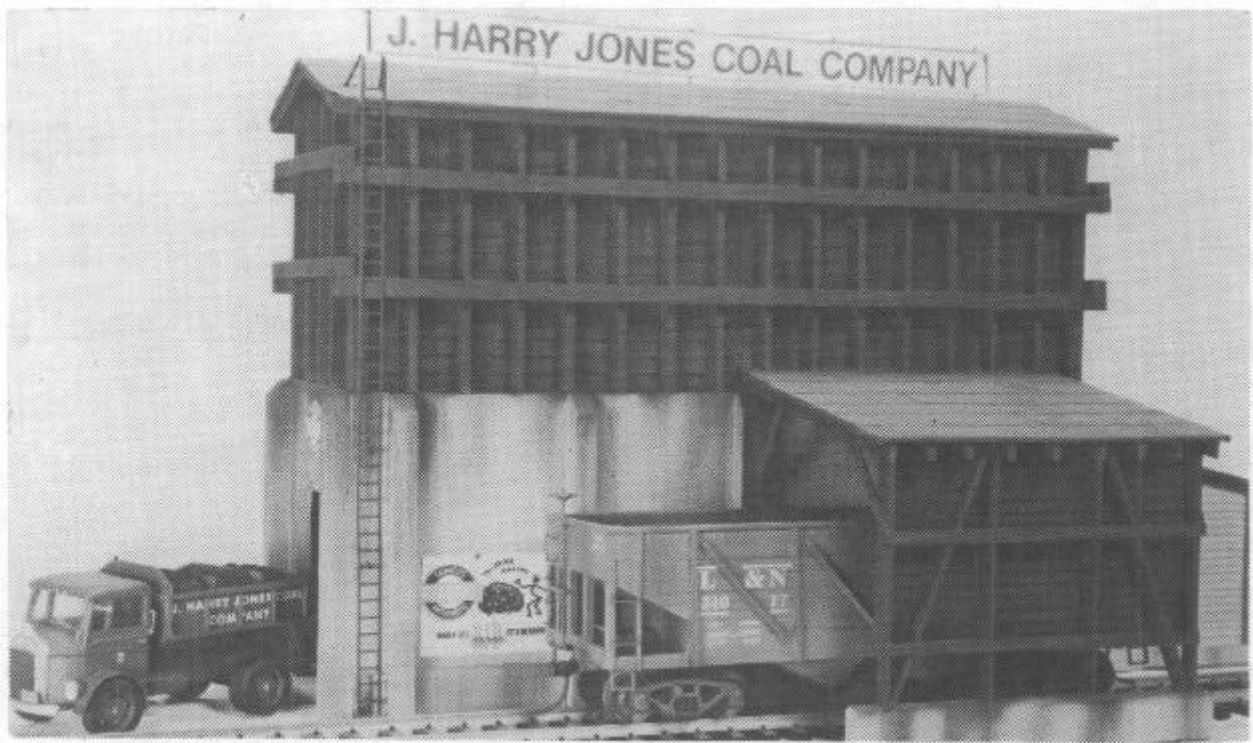
**LVM14 - COAL BREAKER** - The first of three kits which build a complete coal mining facility but this is all you really need to represent your mine. It consists of a hardboard floor, N.E. corrugated siding, printed windows, predrilled foundations, and heavy card roofs all precut to make assembly easy. Choice of five mine names. Model uses 10" x 12" area and fits two loading tracks on 3" centers. Resourceful modelers can make this mine operable to load their hopper cars. This kit needs LVM00 Stairway Jig if you do not already have one.

**LVM15 - MINEHEAD** - For those who want a complete model, this is the super detail kit. It is the entrance to a slope mine where coal is brought to the surface. A covered conveyor and tower join this unit to the LVM14 breaker. Dummy coal cars, track, electric locomotive, overhead wire supports a large transformer, and utility poles make this model extremely realistic. It covers an area 6" x 20". The step by step instructions are illustrated throughout making this kit very easy to assemble. A large three quarter view drawing shows all details clearly.

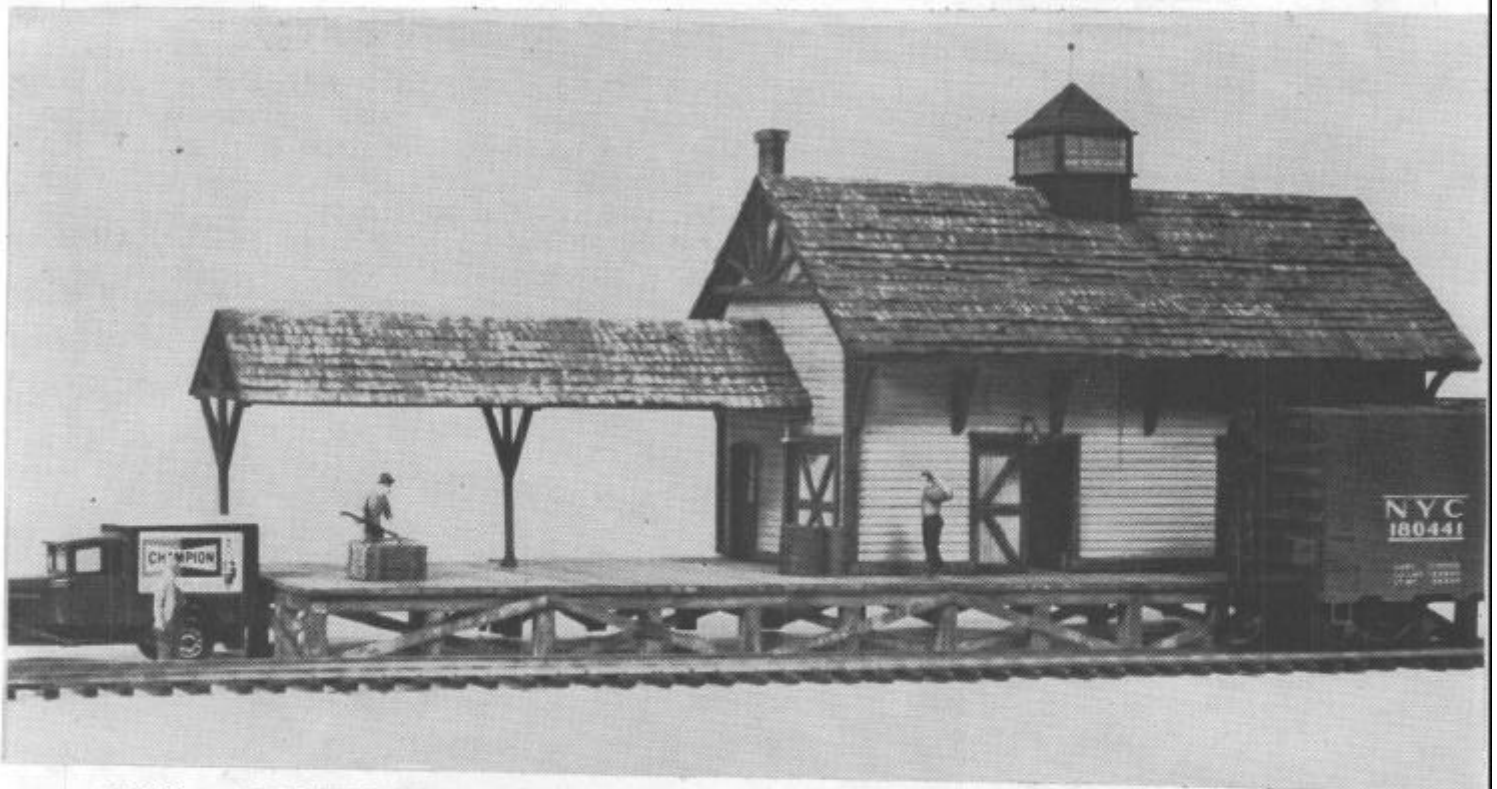


**LVM16 - POWERHOUSE** - This tall building with its towering steel guyed stack and connecting water tank really completes the mining facility. Its purpose is to make electricity to run pumps, the mine locos, and all the machinery. It takes an area 3 1/2" x 13" and could be used as a factory powerhouse. All three mine kits together assembled as shown below occupy an area 15" x 40".





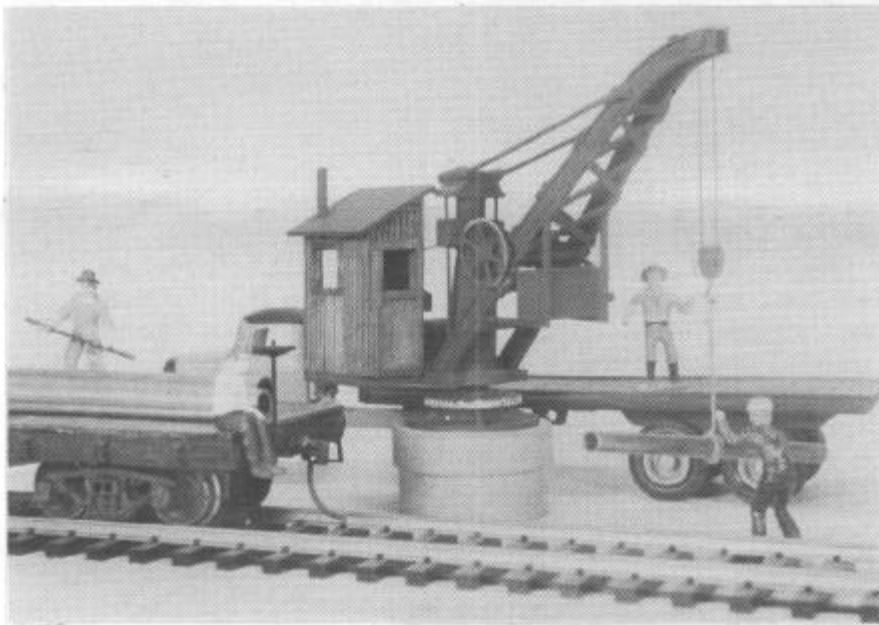
LVML7 - J.HARRY JONES COAL COMPANY - A duplicate of a real Allentown coal dealer's facility with changes made for compression and convenience. Metal window and door castings are used in the attached office building. Signs are furnished or you can substitute your own. A wealth of drawings and step by step instructions make this easy to assemble. Takes an area 6 1/2" x 12".



LVML8 - FREIGHTHOUSE - Even after the days of steam there wasn't a town or city that did not have a freight house along its railroad tracks. Your piano, carpet bicycle, or Sears Roebuck order usually had to be picked up at the freight-house. There was no UPS delivery. This model occupies an area 5" x 14". Cast double hung windows, doorway, and roof supports make it easy to assemble. It has a shingle roof and a large platform. The platform roof and roof end fancy work give this building a lot of Mid Victorian grace and beauty.



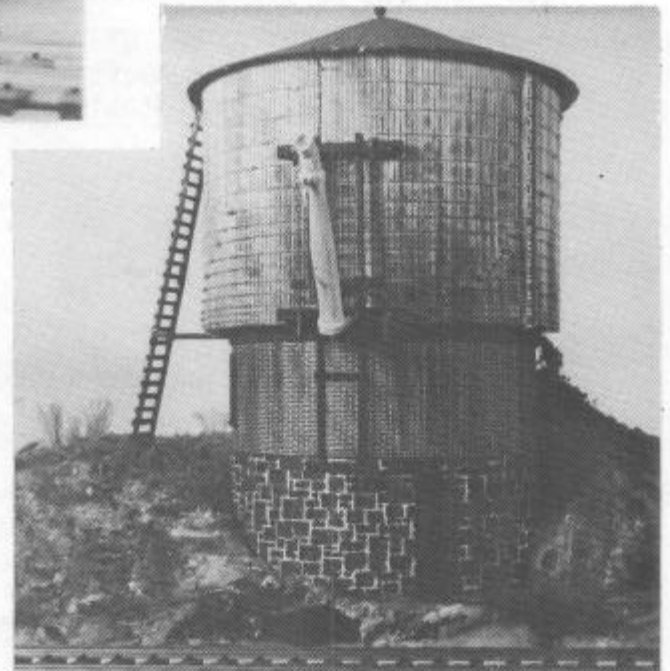
LVM19 - ELEVATED GATE CROSSING SHANTY - As a companion to our LVM5 Crossing Gate here is a unique tower which exudes railroad flavor. It will only need a 2" sq. area and stands tall at 4 1/2" to the roof peak. All cast windows and stairways make this a joy to assemble. Now you can complete your crossing protection.



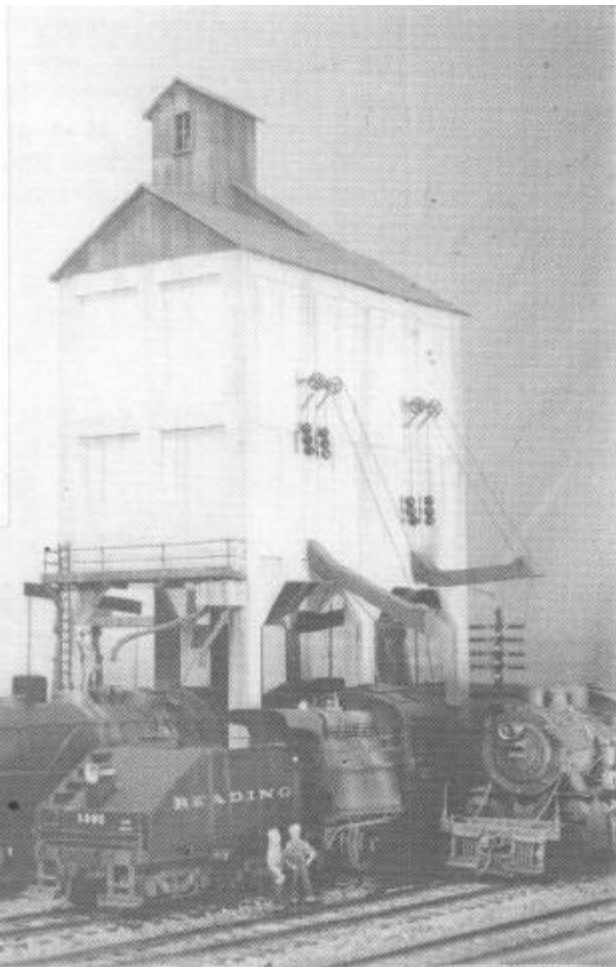
LVM20 - BROWNHOIST PILLAR CRANE

This little workhorse makes an ideal companion to the LVM18 freighthouse, a warehouse, or an unloading platform. It consists of seven detailed castings, and has three different types of cab to choose from and it is exact 3/16" scale. The entire unit swivels upon the base. Add fascinating detail to your layout for a few bucks.

LVM21 - READING WATER TANK - This is a model of a tank once used on the Reading R.R. at Gordon, Pa. which was supported by a circular brick and stone base which probably housed other materials used on the railroad. The model has a cast spout, turnbuckles, and window. Northeastern stripwood and card stock parts make this tank easy to construct and results in a very attractive model.



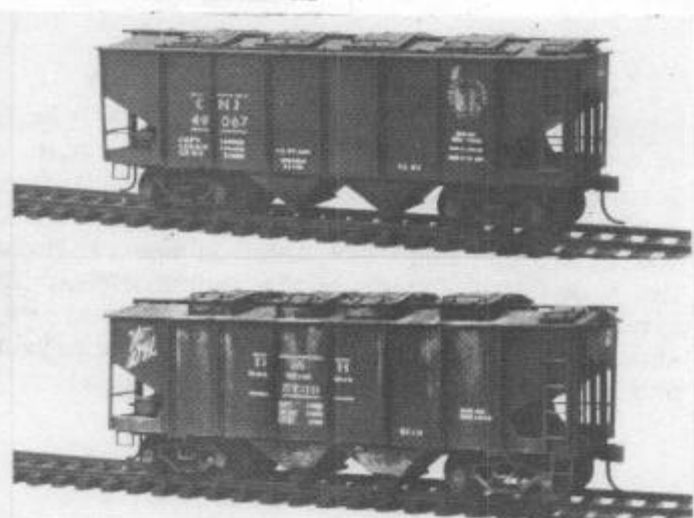
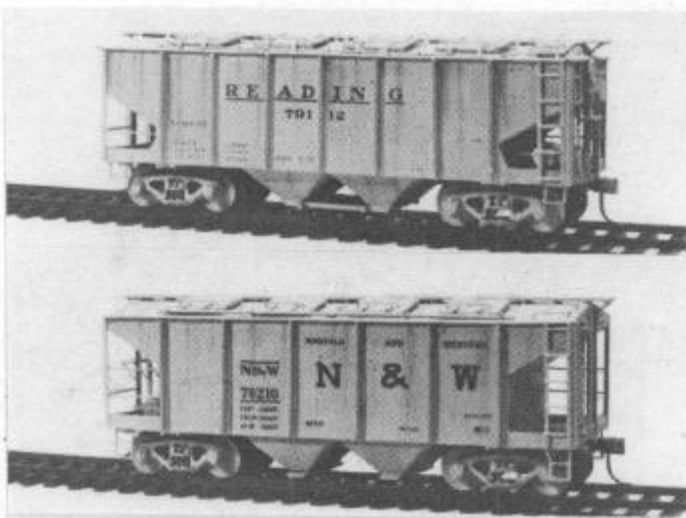
LVM22 - 300 TON CONCRETE COALING STATION - More massive and more modern than our wooden coaling station, this giant could be found in engine terminals and along mainline junction points. It has 4 coal shutes and 2 sand pipes. It takes an area 6" x 8" and stands 15" high at the hoist tower. Designed for 3" track centers with coal unloading track 5" away from the one track. Windows, doors, and pulley wheels are all cast. Everything is precut wherever possible to make for easy assembly. An eye catching piece of scenery for any model railroad.



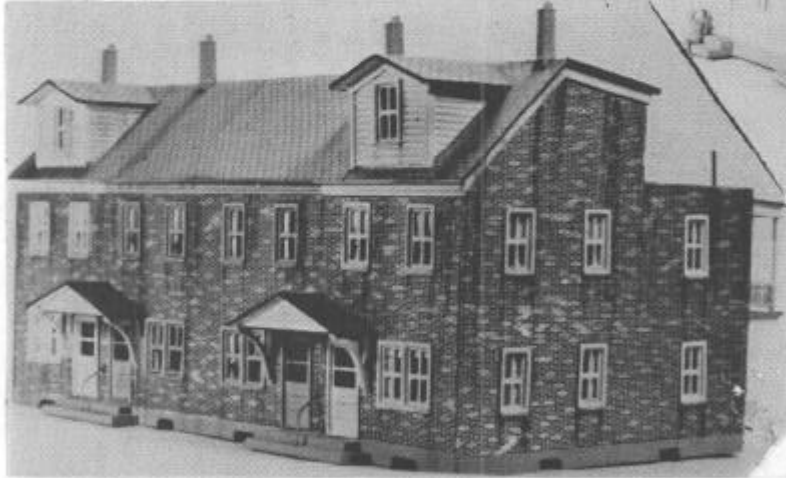
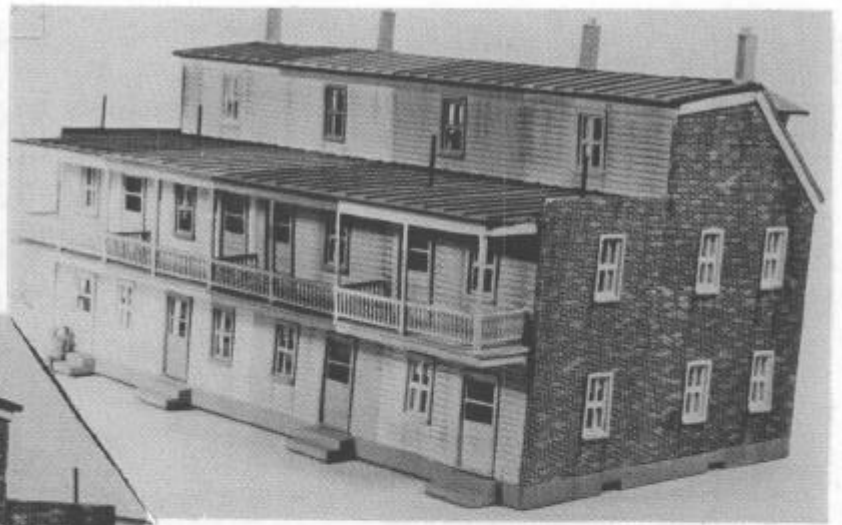
SEE  
SEPARATE  
SHEET  
FOR  
PRICES

LVM23 & LVM23A-B-C - READING, NORFOLK & WEST, CENTRAL R.R. OF NEW JERSEY, & DELAWARE & HUDSON COVERED HOPPER CARS - The Reading produced a 31' covered hopper car by converting a regular coal hopper car. Several eastern R.R.'s had very similar cars but all had some variations. Wine cement shutes, a more sloping end, higher hatches, or no end walks. Kits are complete with American Models' trucks, Kadee S couplers, and decals as shown. Nothing to buy except paint and glue. All wood parts are precut when possible and die cast hatches make easy assembly. Body is cut from printed card stock. A lead weight supplied adds the necessary weight to keep it on the rails.

If you use Hi-Rail, we now furnish this kit with American Models Hi-Rail trucks with A.F. compatible couplers for the same price.



**LVM24 - ROW HOUSES** - Now, only \$ has a kit to build row houses similar to those found in towns and cities in the Northeast and other sections of the U.S. Kit includes 12 door, 42 window, 4 canopy supports, 4 chimney castings, and 9 Grandt Line posts and 8 railing castings. All wood and cardstock parts are cut to size wher-



ever possible. Brick and shingles are supplied by Model Hobbies.

Possibilities are numerous. Two units together for a longer row. A bay added to end home, or a barber shop or hair dresser with a sign. A row of garages, back yards added, or windows arranged to suit needs. 11" x 7" area required.

**LVM25 - 8,000 GALLON TANK CAR** - Kit complete with American Models trucks, Kadee couplers, and decals. The PVC tank is covered with a heavy paper wrap with rivet impressions so that a car without rivets can also be made. All wood parts precut. Tank supports, ends, domes, brake wheel, and brake cylinder are cast for easy assembly. Step by step instructions contain many drawings to aid in construction. There are 7 different decal and lettering sets to choose from for one, two or three dome cars.

- TEXACO - Silver tank, large black letters, single dome
- CITIES SERVICE - Green or black tank, white letters, single dome
- DEEP ROCK - Black tank, yellow letters, single, double, or triple domes
- UTLX - Black tank, yellow lettering, single, double or triple dome
- MOBILGAS - Red tank, large white letters, single dome
- IMPERIAL OIL - Black tank, white letters with white sections lettered in black.
- DOMINION SUGAR - White tank with black patch red letters. Single dome
- CONOCO - Red tank, white letters. Single dome.



If you use Hi-Rail, we now furnish this kit with American Models Hi-Rail trucks with A.F. compatible couplers for the same price.





LVM28 - BULK OIL DEPOT - Since the 1920's, oil has been pushing coal into second place and the railroads have played an important part in this changeover. Home heating oil, various gasolines, drums of oil and grease, were distributed to local dealers. This model is perfect for use on steam or diesel era layouts and its proto-

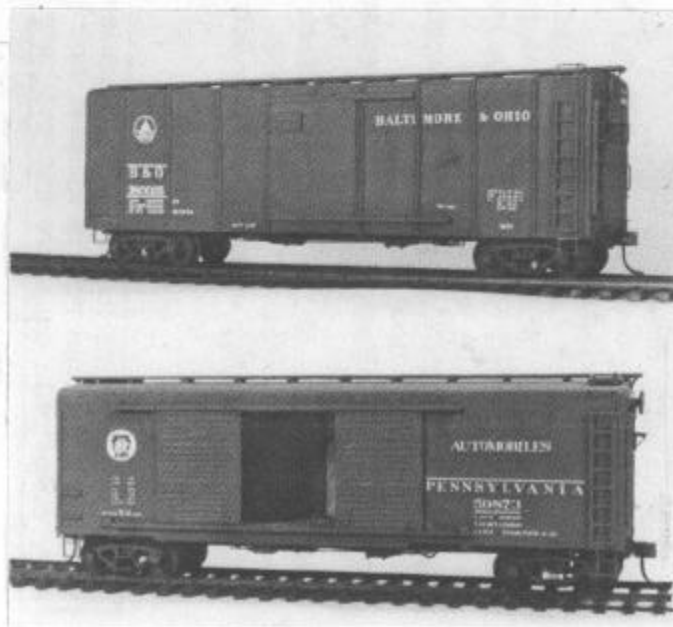
is equally at home in a large city or a small country town.

The bulk oil depot is condensed to conserve layout space, but is so designed to allow the model builder to add more or larger tanks to suit his needs or space. Extra piping can also be found in your own clothes closet space in the form of heavy clothes hangers.

This model is assembled upon a 6" x 26" piece of 1/8" thick hardboard or Masonite to make it easier to move to its location on the layout. This hardboard is not furnished due to its large size.

All other parts are precut to size wherever possible. Windows and door castings make assembly easy. The emblems and various signs are furnished in bright colors. The instructions contain many drawings to simplify construction and there is even a large section explaining how to enclose your depot with realistic looking chain link fencing.

A companion piece is the LVM8T 1934 cab over engine Mack tank truck.



LVM29A & LVM29B - B & O WAGON TOP BOX CAR & PENNSY ROUND ROOF AUTO CARS -

Two old favorite round roof cars with plenty of detail including all underbody brake rigging. The modeler can add or leave off whatever he chooses. Kit includes American Model trucks, Kadee S couplers, and CDS lettering. All wood parts are precut to size wherever possible. A unique method of applying the B & O car's ribs will be of interest to the builder. Metal ends, doors, ladders, brake housing, brakewheel and brake rigging, plus full size plans and many drawings make for easy assembly.



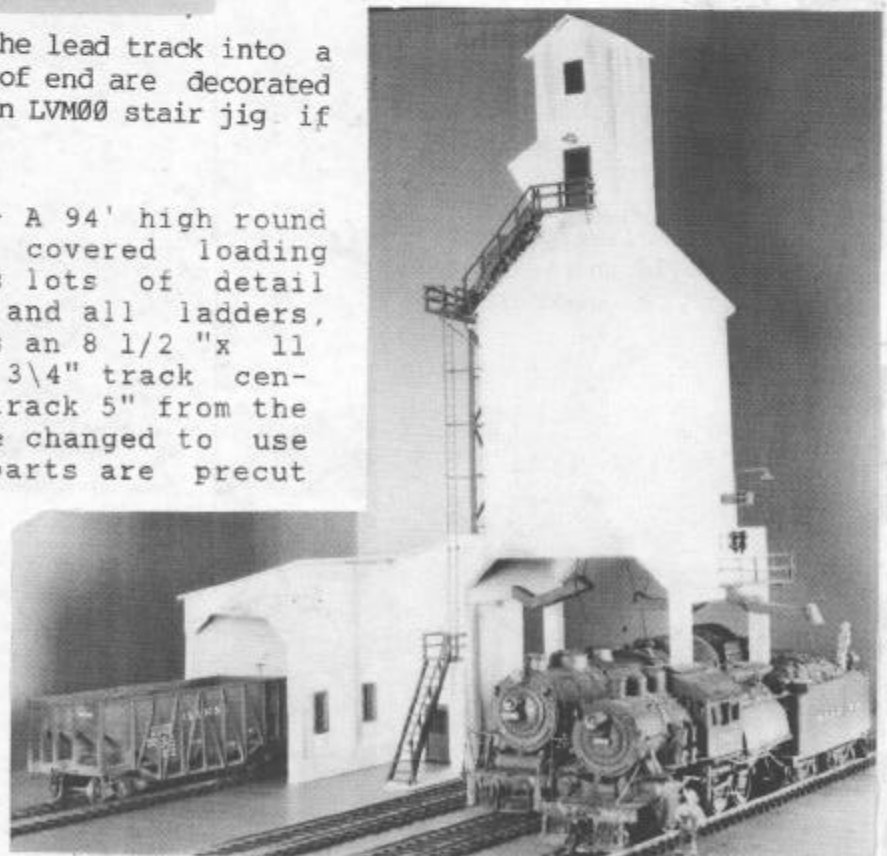
LVM30 - LEHIGH LUMBER CO.  
 This old lumber storage shed and its attached office can still be found today in almost every small town or large city. It will provide another destination for your flat cars, gondolas, and box cars loaded with lumber and other related products. It takes a space 6 1/2" x 11 1/2" and even sports a radial saw and saw table. Attached office can be located on either end or behind the shed on either end. At least four lumber piles are included with the kit. Lots of detail. All parts are precut.



LVM31 - COMBINATION TOWER-STATION -  
 In the days of steam before C-T-C control, when telegraphers, towers and a Dispatcher controlled the traffic a unit such as LVM31 was a busy place. This model takes an area 5" x 10". It contains 28 double hung windows, 1 freight door, and 3 door castings. Whenever possible, parts are precut to exact size and many are color coded to make them easy to identify and where they are used in assembly. This station is good for use along a branch

line, mainline, or situated near the lead track into a yard complex. Bay and station roof end are decorated with a sunray design. Kit needs an LVM00 stair jig if you do not already have one.

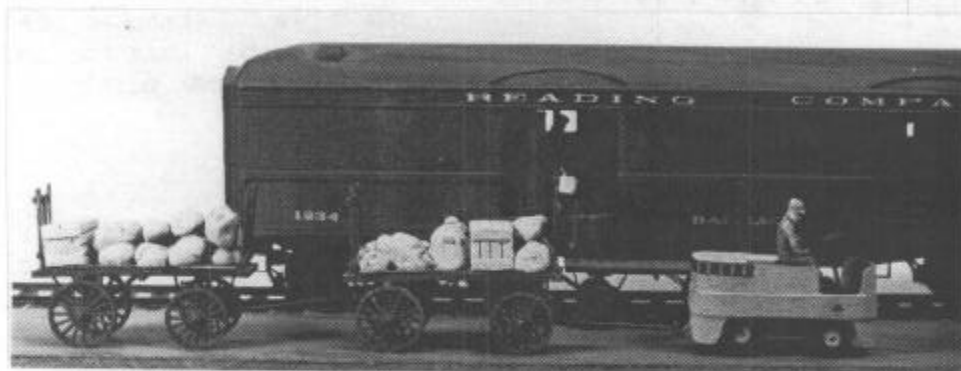
LVM32-500 TON COALING TOWER - A 94' high round concrete coaling tower with covered loading track. Services 3 track' has lots of detail including a coal loading car and all ladders, stairs, and platforms. Takes an 8 1/2 "x 11 1/2" space. Designed for 2 3/4" track centers with a coal unloading track 5" from the outside track. Can easily be changed to use with 3" track centers. All parts are precut to fit wherever possible.



LVM33 - FORK LIFT TRUCK - These fork lift trucks can be found almost anywhere there is an industry or on any freight loading platform. Fork lift actually raises or lowers. All the parts are precut to size with small amount of shaping necessary. Good



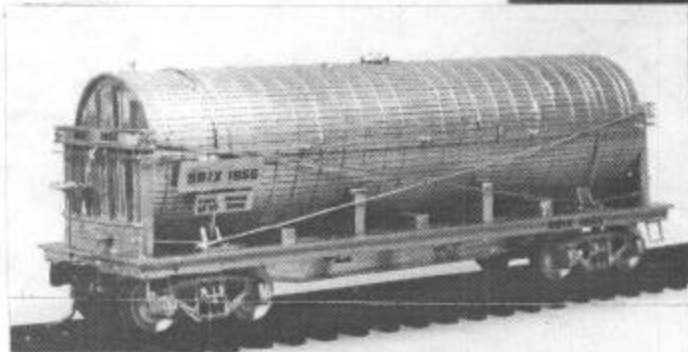
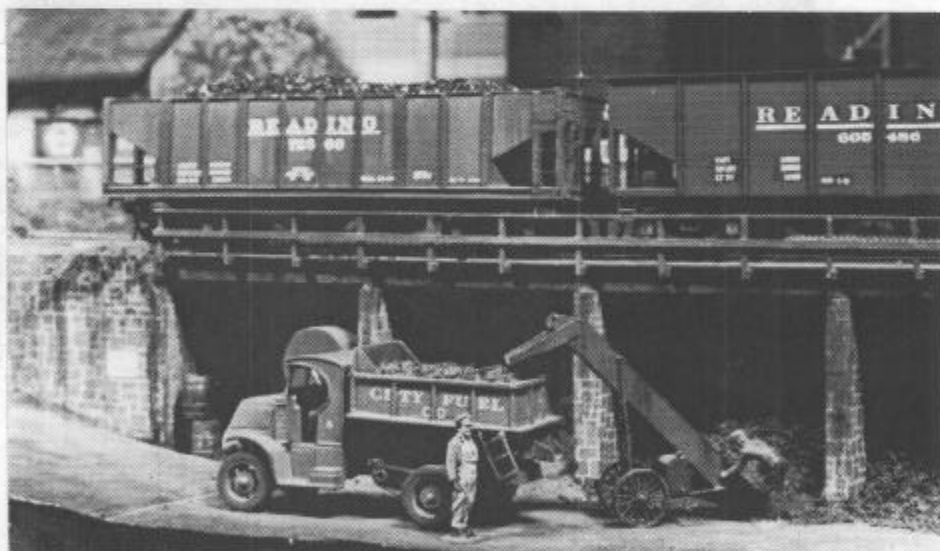
companion to LVM18 and LVM7 or any truck unloading scene. Kit also includes enough precut wood parts to make three pallets.



LVM34 - ELECTRIC BAGGAGE TRUCK - This little buggy can still be found pulling baggage wagons to and fro from one platform to another in large terminals and stations. All parts precut with small amount of shaping to be done. Artisto makes a perfect figure to in this truck's seat.

LVM35 - BAGGAGE WAGON - We still see these little wagons around stations and terminals being unloaded or loaded with mail bags, suit cases, boxes, parcels, and various other items hauled by baggage or express cars. All parts precut and wheels rotate. Colorful with green body and red wheels.

LVM36 - COAL LOADER - These endless conveyors can still be found in any respectable coal yard fullfilling their job of loading coal from bin to coal delivery truck. Easy to build in one evening. Can be used around LVM17.



LVM37 - STANDARD BRAND VINEGAR CAR - This unique wooden tank car of the 1920's - 1940's was expressly used to transport vinegar from the manufacturer to the bottling Co. This car carried Standard Brand made from fermenting cider, wine, etc. Complete with decals and American Models scale trucks and couplers.

If you use Hi-Rail, we now furnish this kit with American Models Hi-Rail trucks with A.F. compatible couplers for the same price.

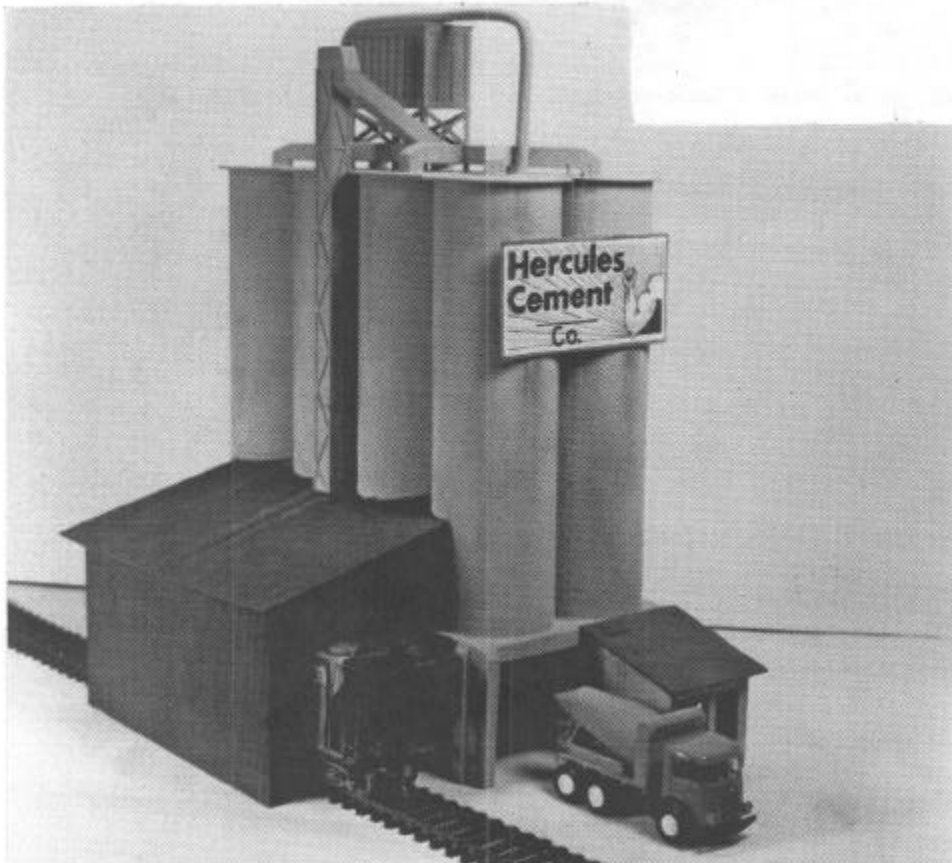




LVM38 - CORRUGATED BOX CO. -  
 This 6 1/2" high factory has an impressive water tank and colorful sign. The office end has a loading platform for railroad cars and trucks. It can be all brick (as shown) or brick with concrete reinforcing posts and window sills (painted grey instead of covered with brick paper). Takes an area 8 1/2" x 19". All the wood parts are precut wherever possible.

Interior of the factory has a silhouette of various machinery in case you wish to use interior lighting.

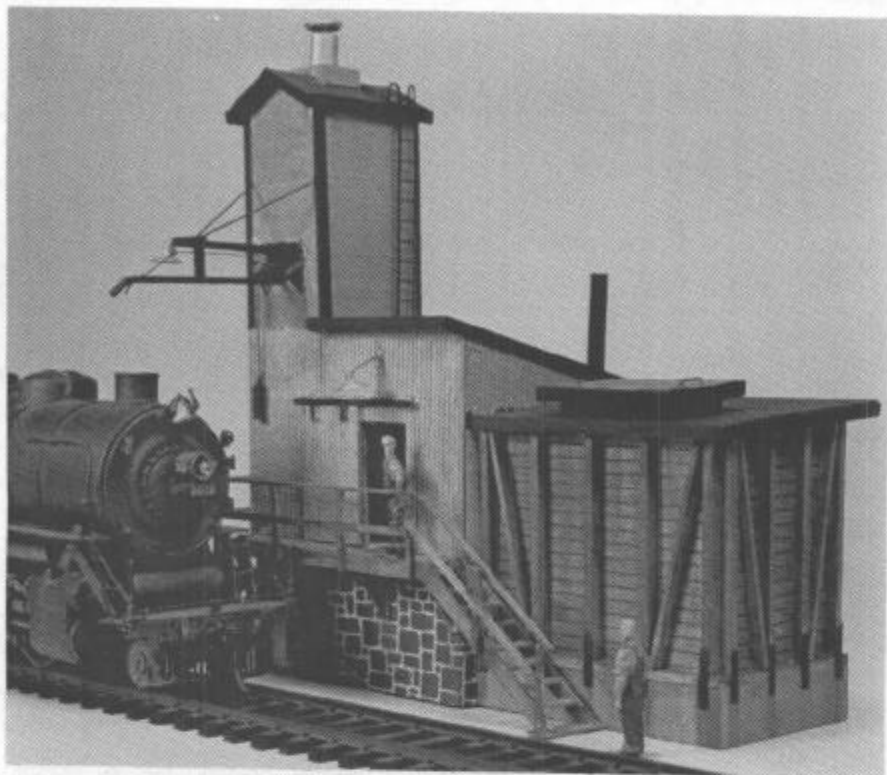
LVM39 - DUPONT CHEMICAL TANK CAR -  
 Very similar to the regular tank car assembly with a different dome and platform. Bright yellow and green tank and underframe. Decals are red, white and black. If you use Hi-Rail, this kit is furnished with A.M. Scale and Hi-Rail trucks and A.F compatible couplers.



LVM41 - HERCULES CEMENT CO. -  
 Bulk cement plants furnish the materials used in making concrete such as sand, crushed stone, and cement. It is all stored in silos and fed by gravity into the mixing hopper on ready-mix cement trucks. This model takes a space 8 1/2" x 11 1/4". A good source of revenue for your railroad's covered hopper cars.

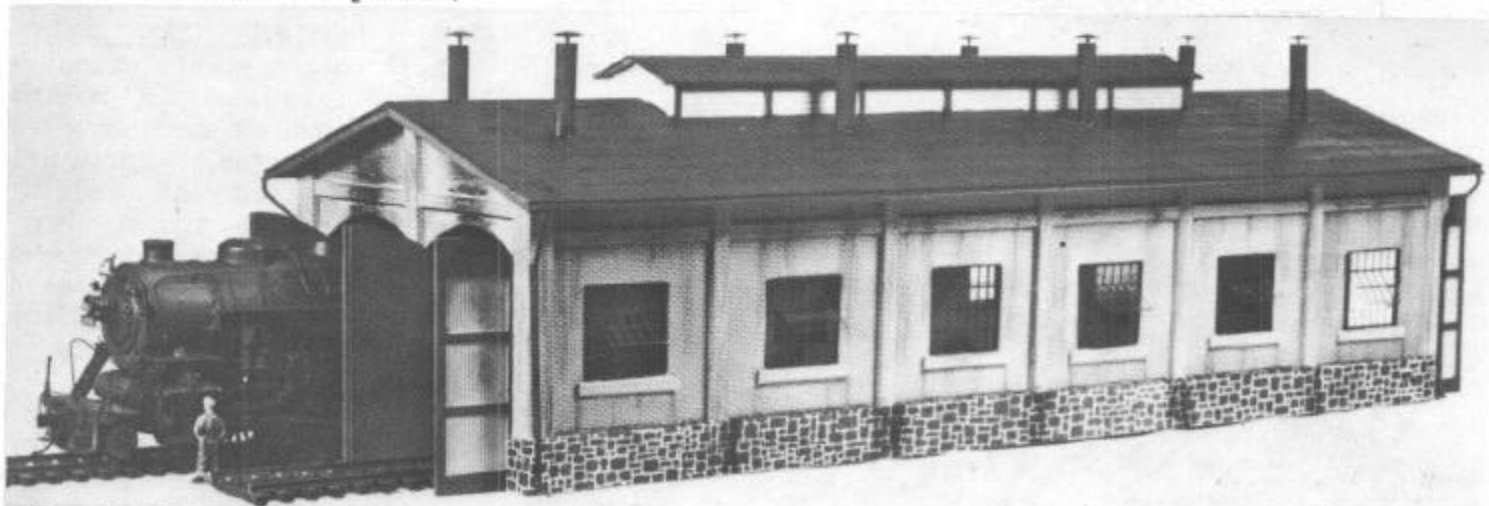
All parts are precut wherever possible and lots of drawings are added to the instruction sheets to make for easy assembly. The sign is also furnished.

LVM42 - SANDHOUSE - A very detailed replica of the B&O sandhouse. Base is heavy cardstock overlaid with corrugated and 1/8" sheath stripwood sheet. Sand was dropped into reinforced storage bin, conveyed into tower house, heated and fed to loco domes through a spout. Takes up area 6" x 3 1/4". Parts precut wherever possible.

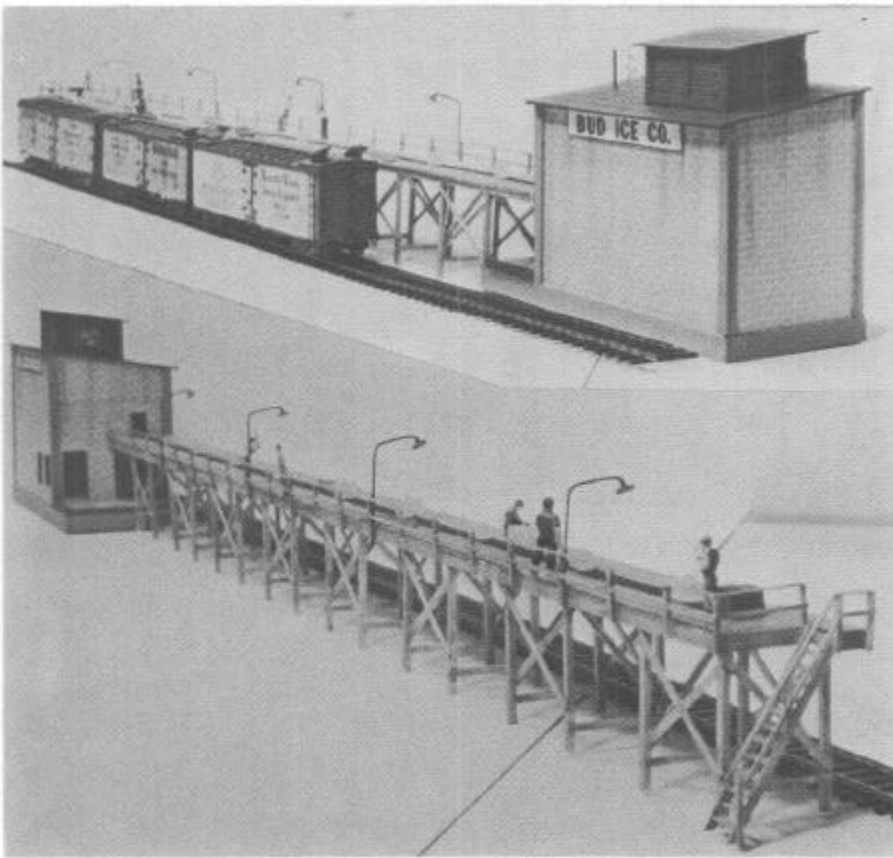


LVM8-M - CONCRETE MIXER TRUCK - This 1934 cab over engine truck (left) is a good companion to the Hercules Cement Co. Die cast wheels, printed card and precut wood parts help to make this model easy to assemble from illustrated step by step instructions.

The body alone can be purchased to put upon a Hartoy rear dual axle truck as seen in the right of the photo. See list for prices.



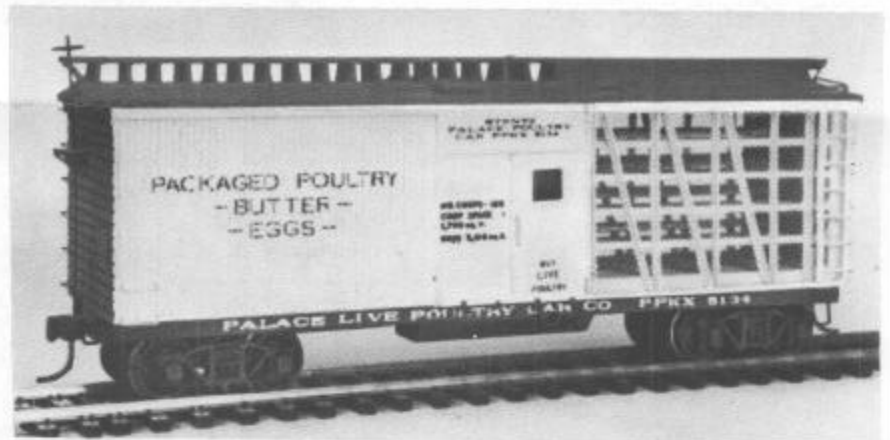
LVM43 - ENGINE HOUSE - A brick building as used by small railroads or branch-lines to house their steam, diesel, narrow or standard gauge locomotives. The building takes an area 6 1/2" x 19". It can be all brick as shown or the vertical and horizontal braces can be all concrete. It is made up predominantly of cardstock, N.E. stripwood precut wherever possible covered with stone and brick paper overlays. Tracks are on 3" centers. The LVM2 watertank and LVM11 water column would be good companion kits.



LVM44 - BUD ICE CO. - The end bunkers in all refridgerator cars had to be filled with ice to keep their contents from spoiling. Build this icing platform to take care of your reefers. All parts are precut to size. Instruction sheet is loaded with drawings to aid in assembly. Bud Ice Co. takes up an area 3 1/2" x 39" and can accomodate four reefers. Ice and loading shutes are included in the kit.

LVM45 - PALACE POULTRY CAR -

These cars were built to ship live poultry which was kept in 120 coops. Hinged trapdoors in the car roof were for access to the watertank and also for additional ventilation during the hot weather. The coops were stored on shelves in the screened area. the attendant lived in the enclosed area above a large feed bin. A green and white conversational piece. Easy to build. Specify Scale or Hi-Rail.



LVM46 - MILWAUKEE HORIZONTAL RIBBED BOX CAR - A completely different 40' box car from the usual was built after the Great Depression using welded side ribs to strengthen the side sheets and make more room in the car interior. Complete with Scale or Hi-Rail trucks and couplers. All parts are precut to size whenever possible and instructions with drawings make for easy assembly.



# Lehigh Valley Models

1225 N. Arch St., Allentown, PA 18104  
Phone - 610- 432-3909

NAME \_\_\_\_\_ ADDRESS \_\_\_\_\_ PHONE \_\_\_\_\_

	ITEM	KIT PRICE	BUILT UP	QUANTITY	TOTAL
LVM00	STAIR JIG	\$2.00			
LVM1	BRANCHLINE STATION	30.00	100.00		
LVM2	50,000 GALLON WATER TANK	35.00	125.00		
LVM3	100 TON COALING STATION	35.00	125.00		
LVM4	ANGELA BOVA PRODUCE	30.00	100.00		
LVM5	CROSSING GATE	7.00	25.00		
LVM6	ELECTRIC UTILITY POLE KIT	10.00			
	ADDITIONAL CROSSARMS [ 10 ]	7.50			
	TRANSFORMER CASTINGS	.50			
	LIGHT REFLECTORS	.30			
LVM7	CONTINENTAL CANNING CO.	45.00	150.00#		
LVM8-C	MACK COAL DELIVERY TRUCK	6.00	25.00		
LVM8-L	MACK LUMBER TRUCK	6.00	25.00		
LVM8-T	MACK FUEL OIL TRUCK	6.00	25.00		
LVM8-I	MACK ICE TRUCK	9.00	35.00		
LVM8-M	MACK CONCRETE MIXER TRUCK	10.00	40.00		
	CONCRETE TRUCK BODY ONLY	6.00	20.00		
LVM9	TRACK BUMPER [3 in one kit]	8.00			
LVM10	HAWK MILLING CO.	45.00	140.00		
LVM11	WATER COLUMN	8.00	25.00		
LVM12	DIESEL HOUSE	45.00	140.00#		
LVM13	TRACK END CAR STOPS	4.00			
LVM14	COAL BREAKER	45.00	150.00#		
LVM15	MINEHEAD [all 3 for \$100.00]	35.00	100.00		
LVM16	POWERHOUSE	30.00	90.00		
LVM17	J. HARRY JONES COAL CO.	30.00	90.00		
LVM18	FREIGHTHOUSE	35.00	115.00		
LVM19	ELEVATED GATE SHANTY	12.00	40.00		
LVM20	BROWNHOIST PILLAR CRANE	15.00	45.00		
LVM21	READING WATER TANK	30.00	90.00		
LVM22	300 TON CONCRETE COALING DOCK	35.00	115.00		
LVM23 o	READING COVERED HOPPER CAR	35.00	115.00		
LVM23A o	N. & W. COVERED HOPPER CAR	35.00	115.00		
LVM23B o	C. N. J. COVERED HOPPER CAR	35.00	115.00		
LVM23C o	D & H COVERED HOPPER CAR	35.00	115.00		
LVM24	ROW HOUSES	45.00	140.00		
LVM25	8,000 GALLON TANK CAR [1 dome]	36.00	110.00		
	TEXACO - silver [2 dome]	37.00	110.00		
	CITIES SERVICE - green [3 dome]	38.00	110.00		
CHECK ONE	DEEP ROCK - black			o - specify scale or Hi - Rail trucks and couplers	
	MOBILGAS - red				
	UTLX - black				
	DOMINION SUGAR - black				
	IMPERIAL OIL - black				
	CITIES SERVICE - black				
	CONOCO - red				

→ Continued On Next Page ←

	ITEM	KIT PRICE	BUILT UP	QUANTITY	TOTAL
LVM28	BULK OIL DEPOT	\$45.00	140.00		
LVM29A o	B & O WAGONTOP BOX CAR	37.00	115.00		
LVM29B o	PENNSY ROUND ROOF AUTO CAR	37.00	115.00		
LVM30	LEHIGH LUMBER CO.	40.00	125.00		
LVM31	COMBINATION TOWER STATION	40.00	125.00		
LVM32	500 TON CONCRETE COALING TOWER	50.00	150.00#		
LVM33	FORK LIFT TRUCK	6.00	25.00		
LVM34	ELECTRIC BAGGAGE TRUCK	5.00	20.00		
LVM35	BAGGAGE WAGON	5.00	20.00		
LVM36	COAL LOADER	5.00	20.00		
LVM37 o	STANDARD BRAND VINEGAR CAR	37.00	115.00		
LVM38	CORRUGATED BOX CO.	45.00	140.00		
LVM39	DUPONT CHEMICAL TANK CAR	37.00	115.00		
LVM41	HERCULES CEMENT CO.	45.00	140.00		
LVM42	SANDHOUSE	30.00	100.00		
LVM43	ENGINEHOUSE	40.00	125.00		
LVM44	BUD ICE CO.	40.00	125.00		
LVM45	PALACE POULTRY CAR	37.00	115.00		
LVM46	MILWAUKEE HORIZONTAL RIB BOX CAR	39.00	117.00		

**KIT ORDERING INSTRUCTIONS:**  
 Pay by check or money order please.  
 No credit cards accepted. No P.O. Box.  
 We usually ship UPS for large orders.

ADD 10% Postage And Handling  
 \$3.50 Minimum, \$6.75 Maximum

PRICES EFFECTIVE APRIL 1, 2000

**BUILT UP MODEL ORDERING INSTRUCTIONS:**

Send check plus 6% postage. Also enclose your phone number. Models with # behind price must be picked up personally because of size and fragility. No built up models to dealers.