

REX "S" GAUGE SCALE MODEL EQUALIZED TRUCKS

- Model No. 11 Scale Trucks
- Model No. 12 Hrail Trucks
- Model No. 17 Tenders

REX "S" GAUGE MODELS: by SUDIMAK

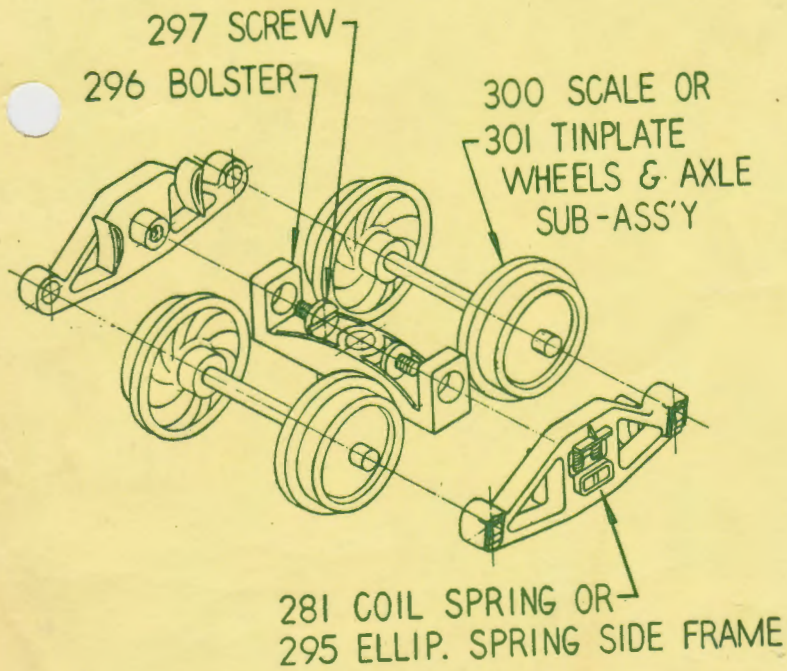
90 Lucy Lane
Northfield, Ohio

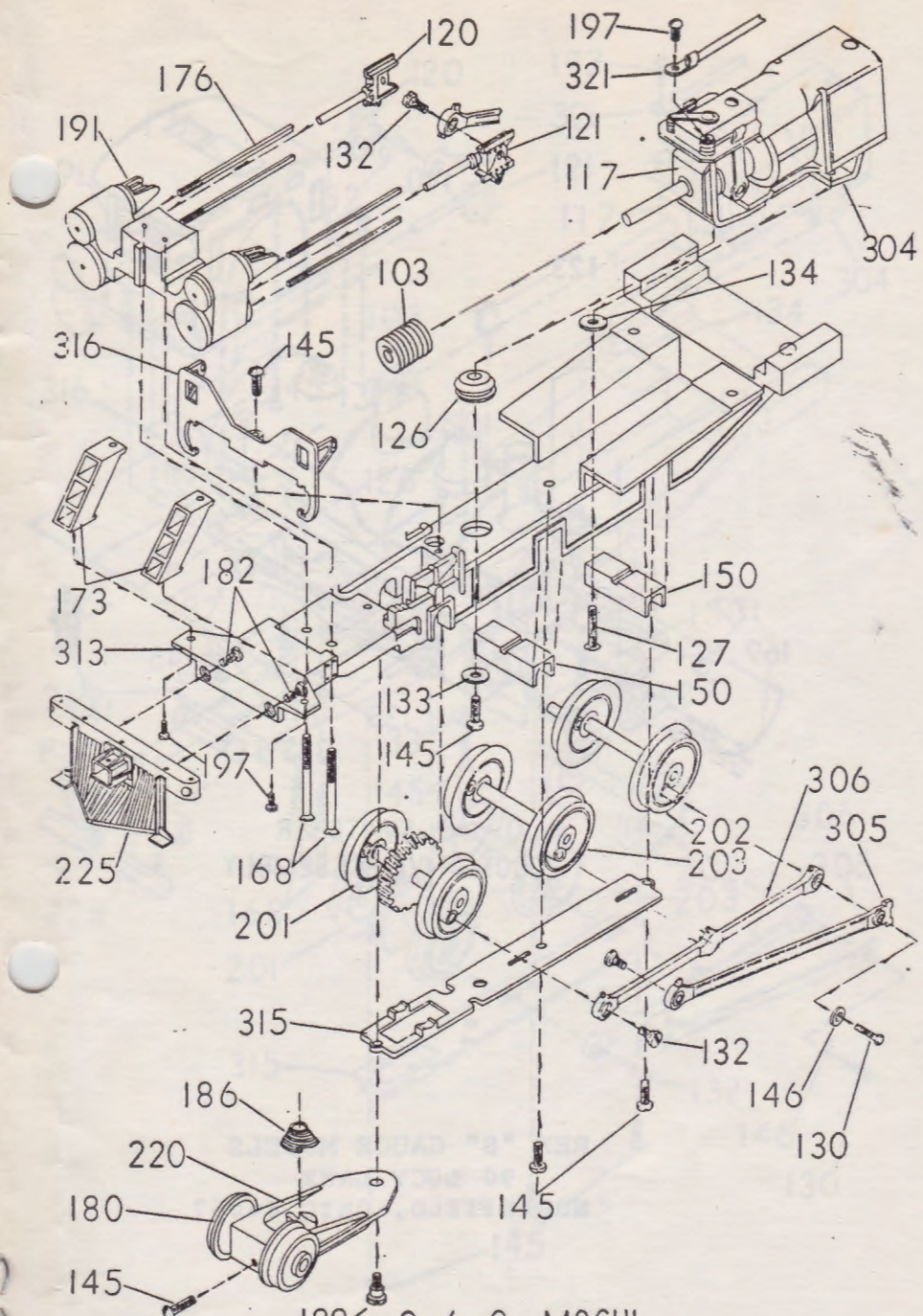
The Rex freight trucks were designed from prototype Buckeye 50-ton double truss style. Trucks are fully equalized and will hold the track over rough and uneven roadbed. The bolster and side frames are high pressure Zamac castings with all detail possible including springs and brake shoes. They have steel axles running in Zamac bearings to insure long life. The accurately scaled nylon wheels run quietly and eliminate shorts from the track. Five-minute assembly job.

ASSEMBLY INSTRUCTIONS

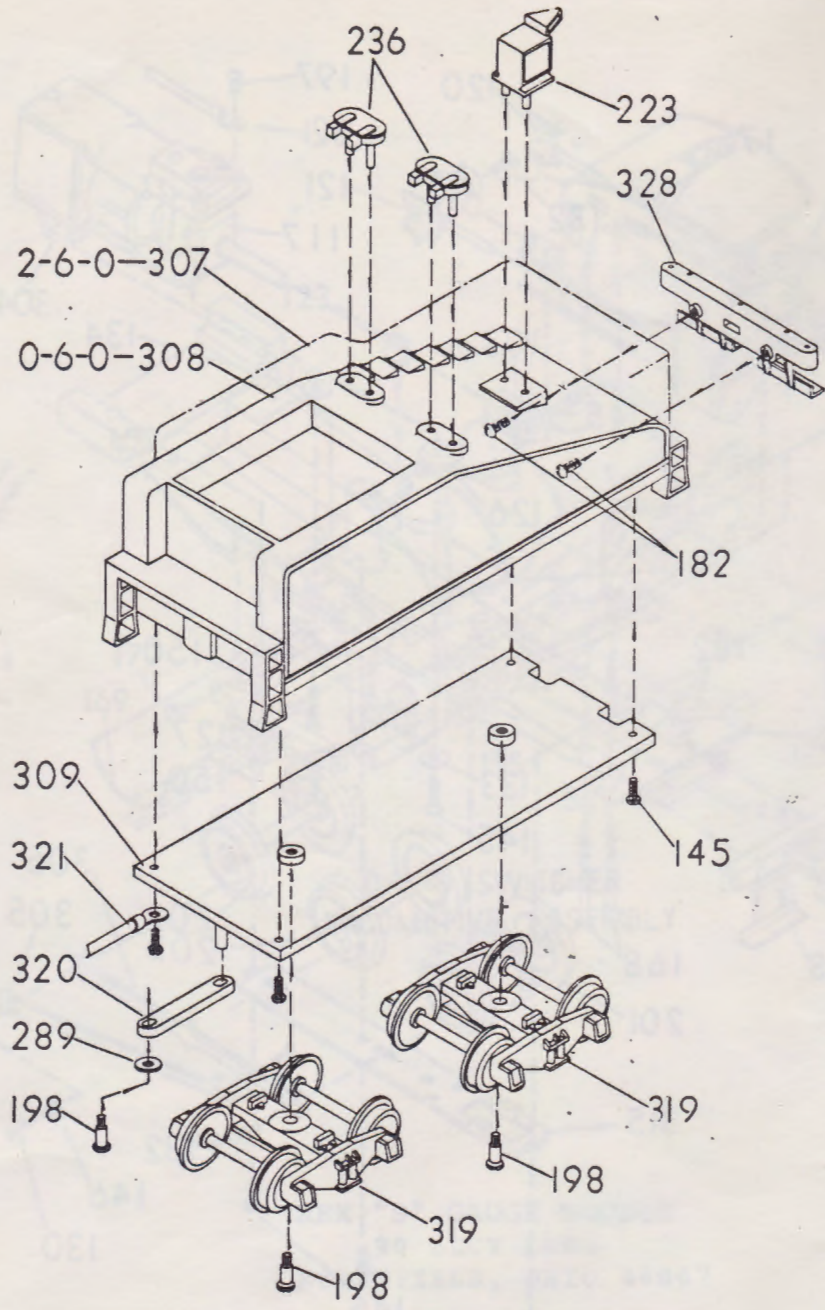
1. Remove diecast flash with sharp scraper or small file, cleaning and smoothing the castings so they will present a neat appearance.
2. The screws used to hold the side frame and bolster are hardened self-tapping type. It will make your final assembly job easier if you will thread the screw into the side frame to establish the thread before you assemble it to the bolster.
3. Put the wheel and axle assemblies in the bearing holes of the side frame and fasten the castings together with the (2) screws. (See exploded drawing.)
4. Put a small drop of very light oil on each bearing and run the trucks back and forth on the track to make sure they operate smoothly before assembling them to the car.

Printed in U.S.A.

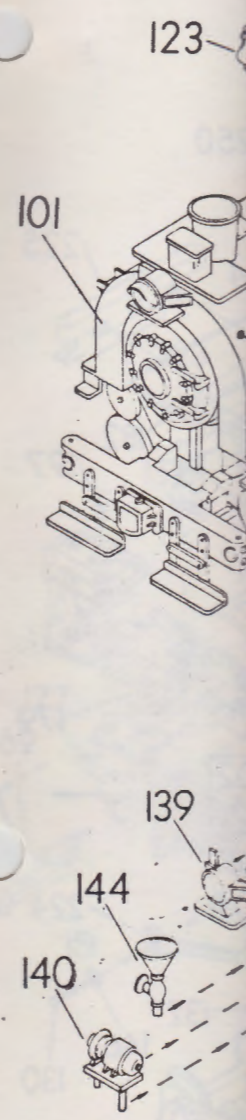


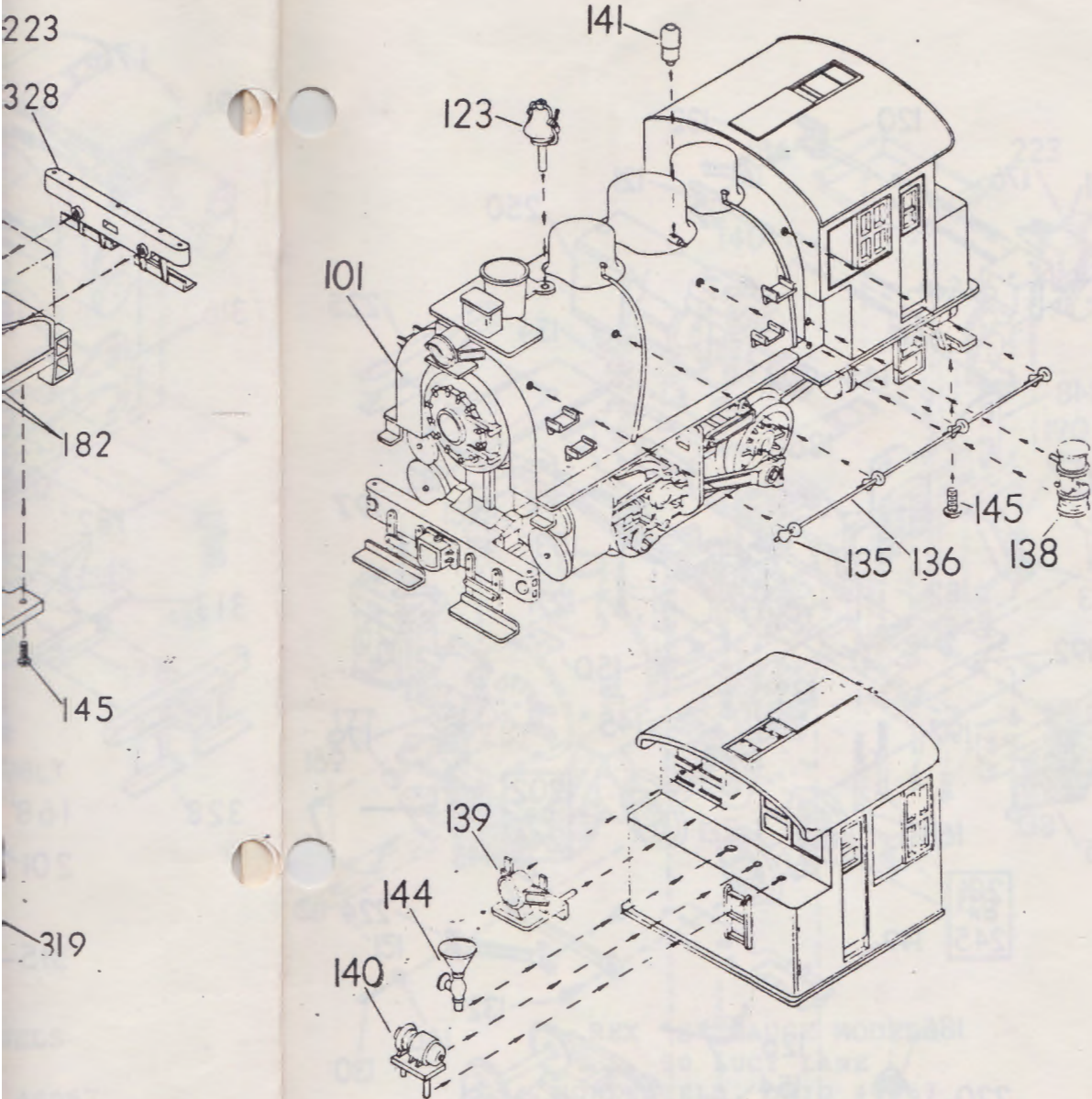


188 2-6-0 MOGUL
MECHANISM ASSEMBLY



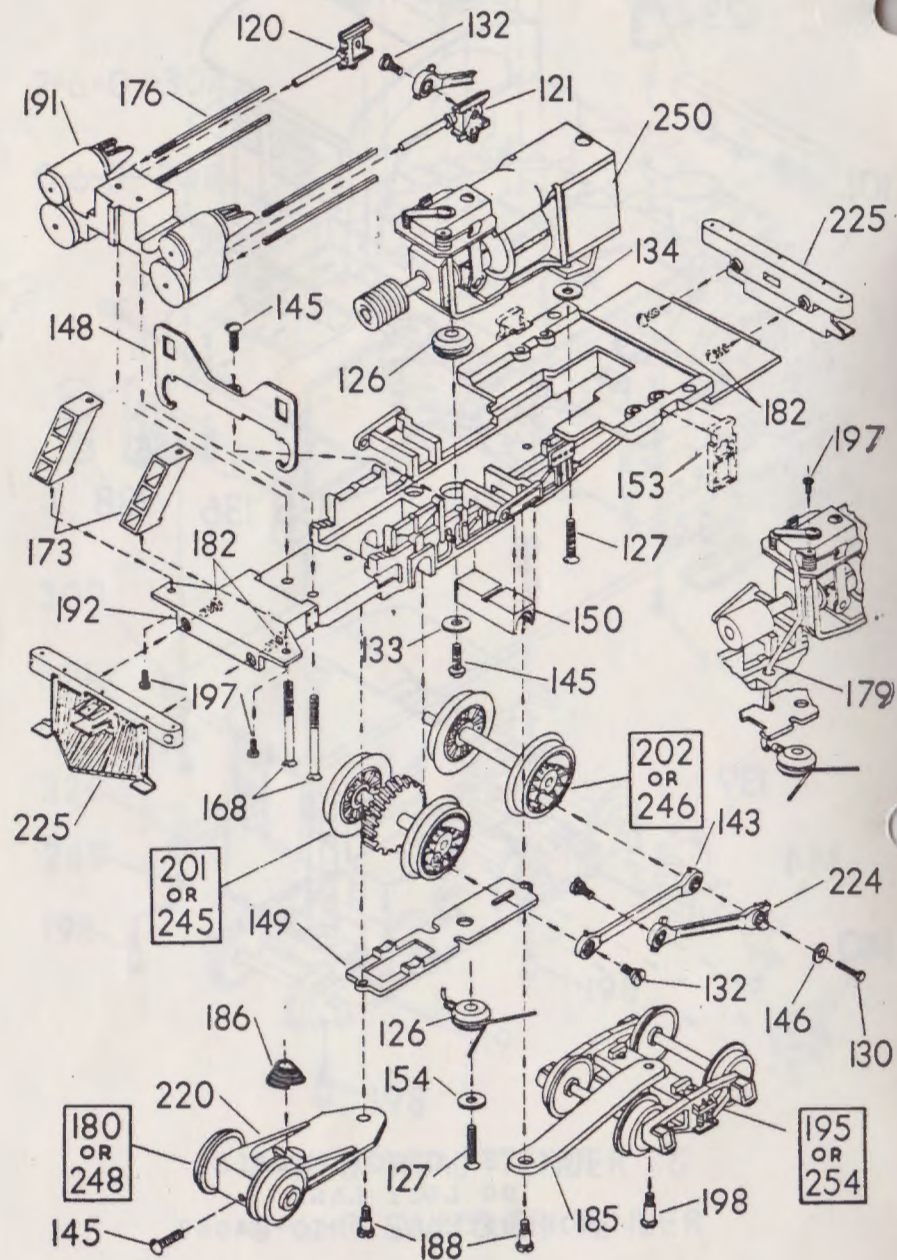
2-6-0 ROAD TENDER &
0-6-0 SWITCHER TENDER



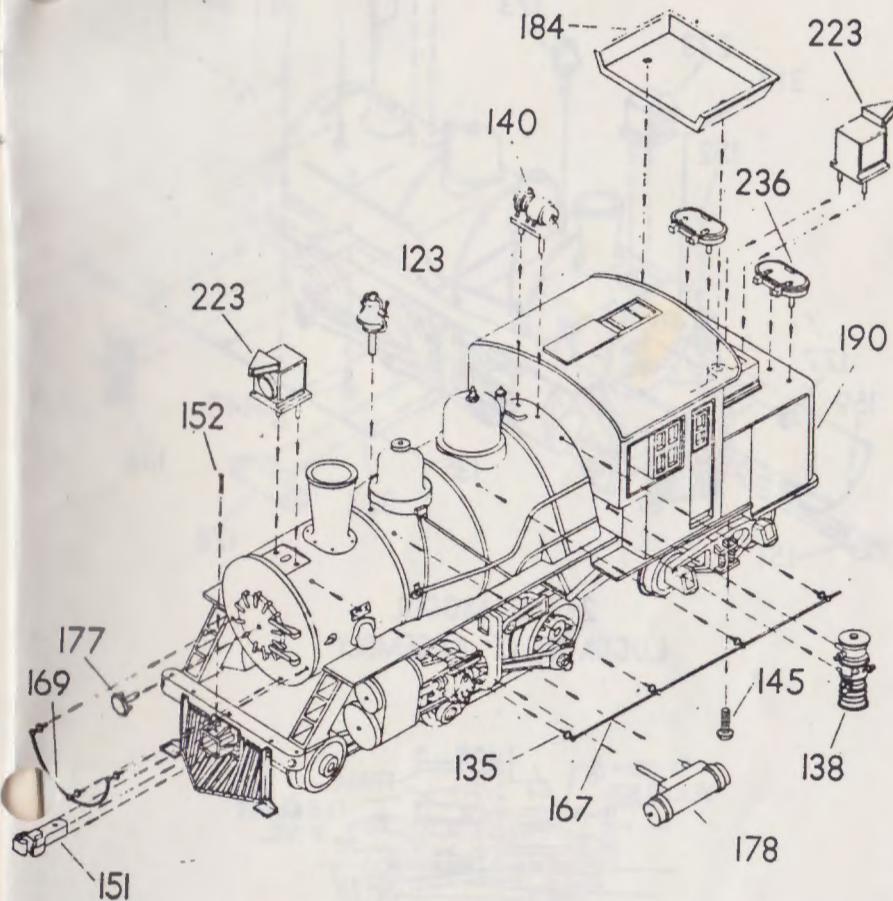


&
 DER

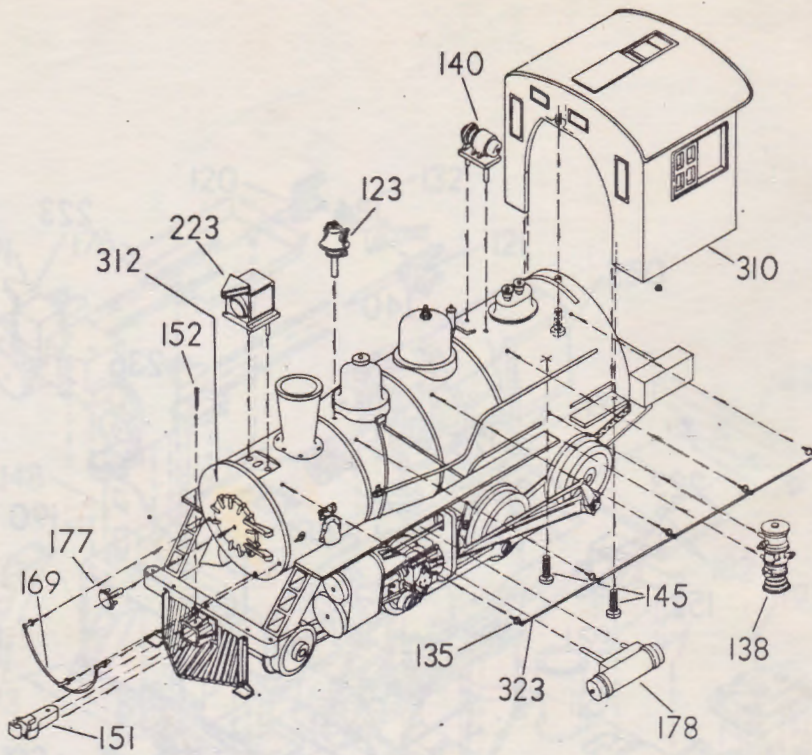
REX "S" GAUGE MODELS
 90 LUCY LANE
 NORTHFIELD, OHIO 44067



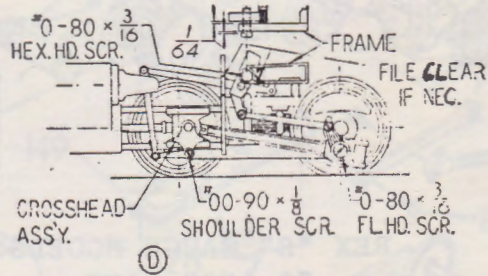
MECHANISM ASSEMBLY



REX "S" GAUGE MODELS
 90 LUCY LANE
 NORTHFIELD, OHIO 44067

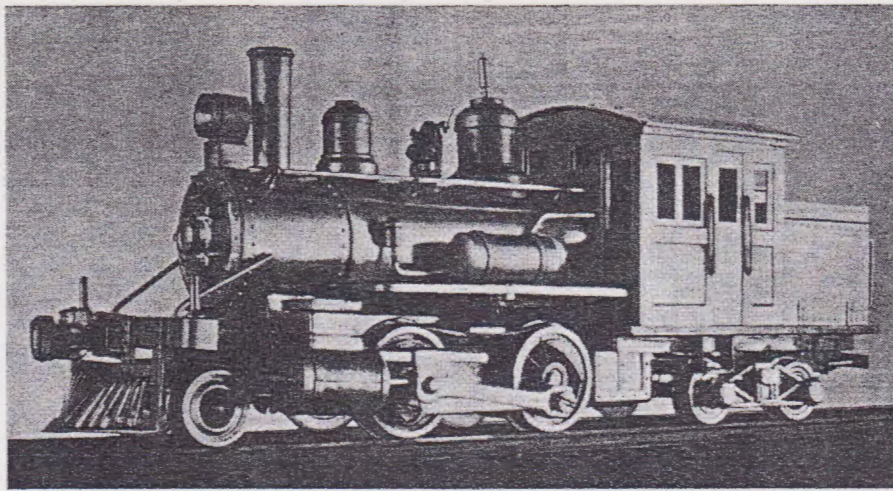


2-6-0 MOGUL
LOCOMOTIVE ASSEMBLY



Valve Gear Assembly

REX "S" GAUGE MODELS
90 LUCY LANE
NORTHFIELD, OHIO 44067



brass materials, using turned, cast, etched, and embossed parts. Major assemblies are soldered together, with machine screws holding the frame, motor, and body pieces together. All wheels checked with the NMRA standards gauge. The front coupler is a cast scale dummy; the rear, a truck-mounted plastic horn-hook type.

Slowest smooth-running speed for our sample was 10 scale miles per hour at 4 volts. Typical prototype running speed of 45 scale miles per hour was reached at 8 volts, while the speed at 12 volts was 80 scale miles per hour.

Motor current with the engine running alone was .5 ampere at 8 volts, while current with full load (drivers slipping) was .7 ampere when running on 12 volts.

The engine weighs 6¾ ounces. It exerts a drawbar pull of .6 ounce, the equivalent of four to five average freight cars on straight level track. Operation on grades would limit the number of cars hauled considerably.

The three-pole motor is mounted in the cab. The worm is brass and the gear is fiber. Our test model ran quietly and performed smoothly.

Price, \$24.50.

S scale 2-6-0

S&P Distributors

90 Lucy Ln., Northfield, Ohio 44067.

The S&P Mogul is a free-lance type with interesting and unusual combinations of parts including a PRR-type cab, Baldwin domes, piston valves, and a Burlington-style headlight. The closest prototype might be a Green Bay & Western engine built by the American Locomotive Co. The model follows this prototype's dimensions and proportions closely.

Except for plastic-and-brass tender and pilot wheels, brass handrail posts, brass

crosshead guides, brass driver tires and cast brass eccentric cranks, the model is composed entirely of good-quality zinc alloy castings. Parting lines and some flash need to be filed away. Some detail is cast on. All features are sharp and well formed. Couplers are not included.

Slowest smooth-running speed was 8 scale miles per hour at 4 volts. At 10 volts the loco ran 55 scale miles per hour, and at 12 volts, 60 scale miles per hour.

Motor current running light was .5 ampere at all useful speeds. Theoretically, current should not increase with speed, but often does. This engine follows the theory.

Engine weight is 25.5 ounces; tender weight, 12.5 ounces. The motor is a Pittman DC-71A, which is adequate for light trains typical of Moguls, but not big enough if you make full use of this engine's pulling weight. Current at full load with drivers slipping is 1.4 amperes, far above the 0.8-ampere motor rating. After breaking in, the maximum current would of course be lower, and closer to the motor rating.

Our test model required quite a bit of filing, adjusting, and running in before it functioned well.

The axle bearings are designed to float so that an equalizing effect is attained. A brass worm and fiber gear are used. The rods are castings and the valve gear is stamped, plated brass. Wheels scale 56" in diameter. The wheels check with the NMRA standards gauge; however, the driver tires on our model were loose. We fixed them with an epoxy adhesive after carefully regauging them.

The tender is composed mainly of good-quality zinc alloy castings. The AAR Standard (Bettendorf style) trucks are equalized but not sprung. All wheels are insulated for two-rail operation.

The instructions and a price list of parts

are carried in a booklet. Exploded drawings of the engine and tender are provided.

Tender kit No. 401 costs \$12.50, boiler kit No. 402 is \$15.50, and the mechanism kit No. 403 is \$32.50. Total price, \$60.50.

Momentum throttle

Diversitron Electronics

P. O. Box 51, Fullerton, Calif.

We tested the ready-to-run version of this transistor throttle unit. It sells at \$49.95. We have not seen the kit version but we understand that the difficult part of the wiring comes already done. Price is \$39.95 for the kit. Both are rated at 0-18 volts d.c. output at 3 amperes. In use, voltage will be more like 11 volts under heavy load if our sample throttle is typical.

We were impressed by three things over all others. First is the appealing shape, including a man-size throttle knob. Second is the simplicity of the controls.



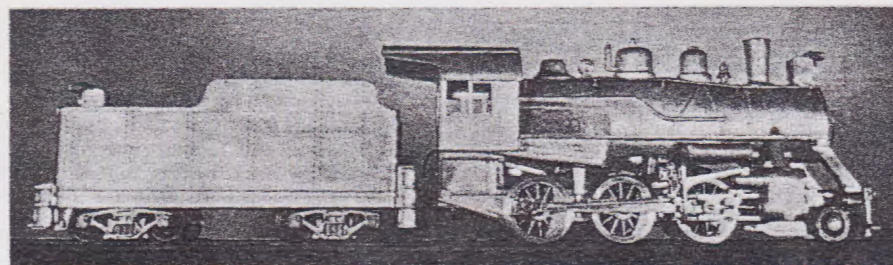
Those who might object to all the knobs and adjustments of more elaborate units will like the simplicity of Diversitron: only five things to move, and we believe the five selected—throttle, brake, reverser, hidden on-off switch, plus a pulse strength control—are probably the five most desirable, considering the manner in which they interact in this unit. Finally, we were impressed by train performance. It was far better than with power packs we have seen.

The Diversitron stands almost 12" high over the handle, 8" over the case alone. The case is 45/16" wide and barely 6" deep. It looks larger than it is.

The reversing key is on the right side of the case and it provides a neutral position. Lamps atop the case show which way it is set.

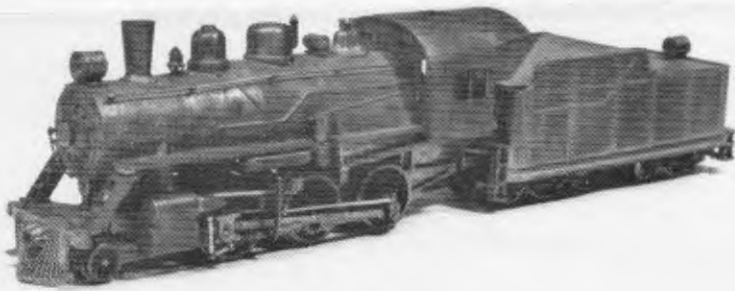
The throttle and brake handles on top do not have notch action and turn more freely than you might expect from their appearance. You pull the brake lever for brake action.

The on-off switch is hidden under the case where you can find it easily, but



REX S GAUGE MODELS

90 LUCY LANE
NORTHFIELD, OHIO 44067
(216) 467-5763



2-6-0 Mogul

The Rex Mogul is a free lance passenger or light freight locomotive designed from several prototypes, most of which have long been scrapped. They reached the height of their popularity between 1910 and 1930.

The closest prototype of this 2-6-0 wheel arrangement was the Green Bay & Western built by the American Locomotive Co., but many similar locomotives built both by Baldwin and American were quite common all over the U.S.A.

The American Locomotive Company furnished us with erection blueprints of this locomotive and similar locomotives that were used extensively in the design of the Rex Mogul. It is a pleasure to acknowledge this cooperation.

Prototype Specifications

Total weight 139,000 lbs.
Tractive power 25,000 lbs.
Water capacity 5,000
Driver diameter 56 inches



0-6-0 Switcher

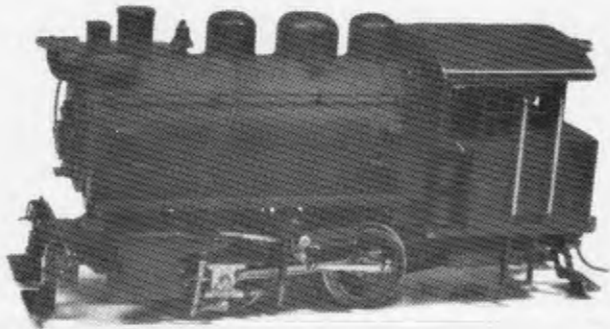
The Rex Switcher is a free lance switching locomotive designed from several prototypes, most of which have been scrapped. They reached the height of their popularity between 1910 and 1930.

The closest prototype of this 0-6-0 wheel arrangement was the Pennsylvania B-6 built by the Pennsylvania Railroad Co., but many similar locomotives built both by the American and Baldwin Locomotive Companies. These were also quite common all over the U.S.A.

The Pennsylvania Railroad Company furnished us with erection blueprints of this locomotive and similar locomotives that were used extensively in the design of the Rex Mogul. It is a pleasure to acknowledge this cooperation.

Prototype Specifications

Total weight 308,000 lbs.s
Tractive power 36,000 lbs.
Water capacity 4,000 gals.
Driver diameter 56 inches



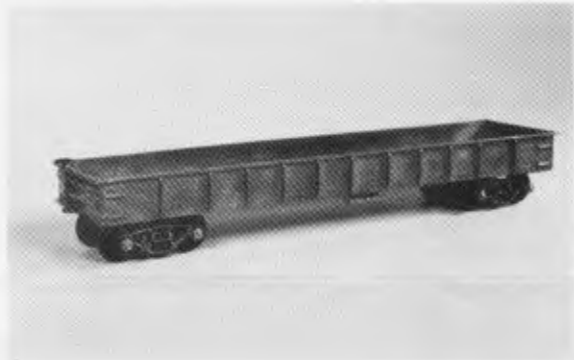
Baltimore & Ohio Dockside C-16 Switcher

We think you might be interested in knowing something about the history of the B & O prototype, Class C-16.

Baldwin built four of these locomotives for the B & O in 1912, and operated them out of the Mt. Clare shops for industrial and light switching work around the Baltimore Docks. They were designed principally for negotiating sharp curves and steep grades. They burn oil instead of coal in order to reduce smoke, fire hazards, ash handling, etc. While the locomotives will handle fifteen loaded cars on a straight level track, the grades and curves on which they are required to operate reduce the normal load to about six cars.

Specifications

Total weight	120,000 lb.s
Tractive Power	27,600 lbs.
Water capacity	2,000
Fuel oil capacity	650 gals.
Driver diameter	48 inches



Gondola

Rex Gondola available with scale or hi-rail trucks.

Rex trucks available in scale or hi-rail.



Also available are the Pennsy Conversion Kits for the 060 and 260.

Kit includes:

Belpaire firebox, Keystone number board, 2 under-cab air tanks, 4 marker lights and 12 marker light jewels.

These are lost wax castings

REX S GAUGE MODELS

90 LUCY LANE
NORTHFIELD, OHIO 44067
(216) 467-5763

PRICE LIST (JANUARY, 1985)

PARTS FOR REX 2-6-0 MOGUL & 0-6-0 SWITCHER

Part No.	Number Needed	Name - Description	Price Each
103	1	Worm gear, single thread, 56p.	\$ 3.75
117	1	Pittman, motor DC71A	\$ 22.50
120	1	Crosshead & piston rod RH.	\$ 1.50
121	1	Crosshead & piston rod LH.	\$ 1.50
123	1	Bell & bracket.	\$.75
126	1	Grommet, rubber.	\$.50
127	1	Screw #4-40x3/8.	\$.20
132	6	Shoulder screw for side and main rods.	\$ 1.50 set
133	1	Washer #2 S.A.E. 3/32 I.D.x1/40.Dx020.	\$.10
134	1	Washer, rubber rear motor mount.	\$.10
135	13	Handrail posts	\$.35 each
138	1	Air compressor, single	\$.55
140	1	Generator	\$.50
145	7	Screws #2-56x1/4 round head	\$.10 each
145A	1	Screw #2-56x3/8 round head front motor mount	\$.20
148	1	Guide hanger	\$ 1.75
150	1	Rear bearing	\$ 1.00
150A	1	Middle bearing	\$ 1.05
156	1	Combination speed nut & box wrench	\$.65
158	1	Nut #4-40 hex	\$.10
168	2	Screw #2-56x3/4 flat head	\$.50 set
173	1	Handrail, boiler front	\$.30
173	2	Front steps	\$ 1.25 set
176	4	Cross head guides, sp. N.S.	\$.50 each
177	1	Number plate	\$.40
178	2	Air reservoirs	\$.45
180	1	Wheels & axle assembly engine truck-scale	\$ 1.10
182	2	Screws #2-56x3/16 round head	\$.10
186	1	Spring, engine lead truck	\$.75
188	1	Shoulder screw, truck pivot & cover plate	\$.25
191	1	Cylinder & boiler saddle	\$ 4.95
197	3	Screw #0-80x3/32 round head	\$.15 each
201	1	Driver, gear & axle assembly front-scale	\$ 6.75
202	1	Drivers, crankpin & axle assembly rear-scale	\$ 5.80
203	1	Drivers & axle assembly intermediate-scale	\$ 5.55
220	1	Engine truck frame	\$ 1.25
223	1	Headlight	\$ 1.00
225	1	Pilot & bolster	\$ 3.95
251	2	Hex-nut #2-56	\$.05 each
304	1	Rear motor mount	\$.75
305L	1	Main rod	\$.95
305R	1	Main rod	\$.95
306L	1	Side rod	\$ 1.00
306R	1	Side rod	\$ 1.00
310	1	Cab	\$ 5.80
312	1	Boiler	\$ 15.00
313	1	Frame	\$ 18.50
315	1	Cover plate	\$ 1.50
321	1	Tender to motor lead wire	\$.75
323	2	Handrail, boiler	\$.20

Part No.	Number Needed		Price Each
*182A	2	Pilot screws #2-56x1/8	\$.10 each
*311	1	Boiler	\$ 14.00
*328	1	Footboard & bolster	\$ 3.95
*223AF	1	Headlight	\$ 1.00
*182	1	Headlight screw #2-56x3/16	\$.10

As an accomodation to those who might otherwise find it impossible to purchase the complete kit, we are offering Mogul and Switcher kits in three sections:

MOGUL KITS

401	Tender Kit	\$ 32.50
402	Boiler Assembly	\$ 44.35
1-403	Frame & mechanism (less tender)	\$ 96.25

SWITCHER KITS

2-411	Tender Kit	\$ 31.50
412	Boiler assembly	\$ 43.50
413	Frame & mechanism	\$ 91.55

TENDER PARTS

8 145	4	Screw #2-56x1/4 round head	\$.10 each
4 182	2	Screw #2-56x3/16 round head	\$.10 each
20 198	4	Screw, shoulder, round head	\$.20 set
223	1	Back up light	\$ 1.00
4 236	2	Water filler can	\$.40 each
307	1	Tender body-road type	\$ 13.50
2 309	1	Tender floor	\$ 5.75
2 319	1	Tender truck assembly kit	\$ 5.65
320	1	Tender to loco draw bar	\$.75
2 328A	1	Footboard & bolster.	\$ 3.75
20 198A	2	Truck bolster spring	\$.15 each
223AB	1	Back up light	\$ 1.00
2 308	1	Tender body-slope back	\$ 12.50
2 272	1	Air brake cylinder	\$.20

REX VALVE GEAR FOR MOGUL & SWITCHER KIT MODEL #19

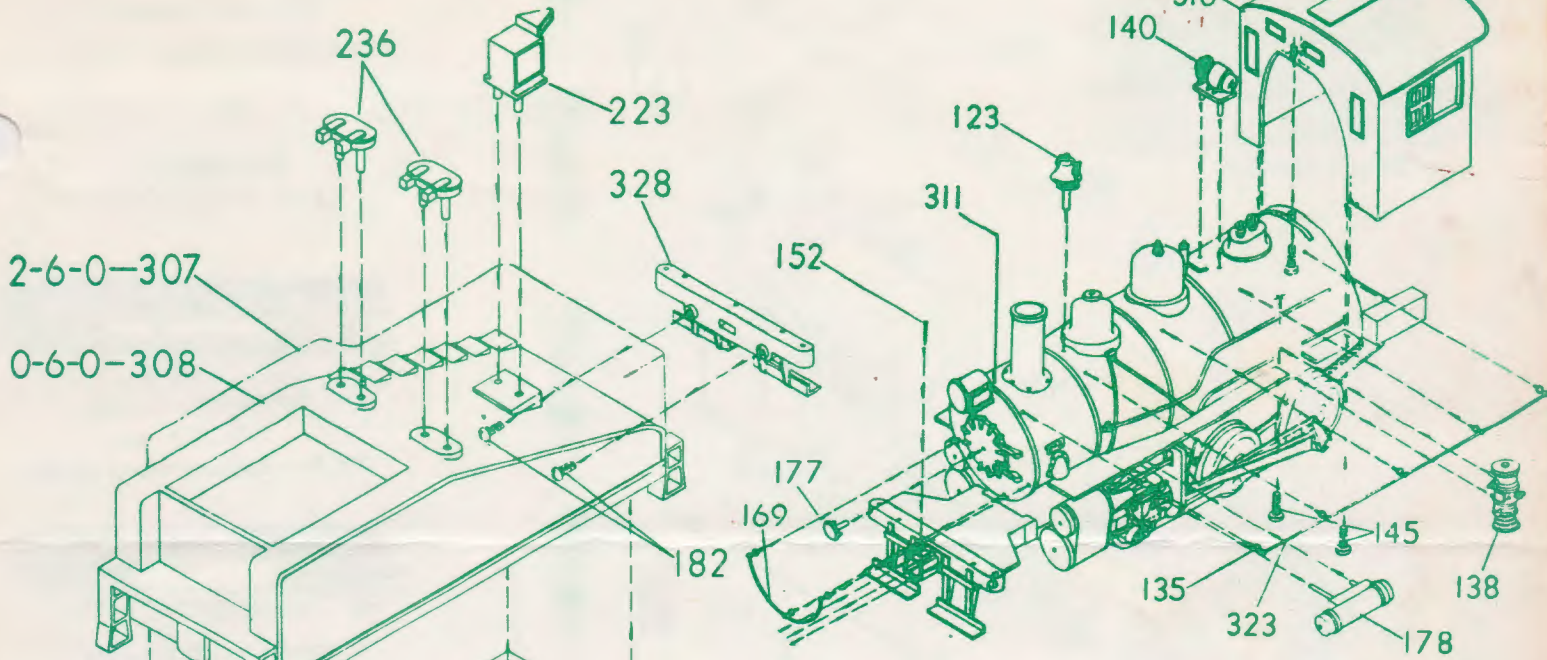
249	4	Rivets	\$.30 each
252	1	Link L.H.	\$ 1.05
253	1	Link R.H.	\$ 1.05
257	2	Screw #0-3/16 hex head	\$.15 each
259	2	Screw #0-80x3/16 flat head	\$.15 each
260	2	Eccentric crank	\$.60 each
265	2	Combination lever	\$.55 each
266	2	Crosshead link	\$.25 each
267	2	Eccentric rod	\$.70 each
268	8	Shoulder screws	\$.55 set
327	2	Radius rod	\$.80 each

PENNSY CONVERSION KIT (2-6-0 & 0-6-0)

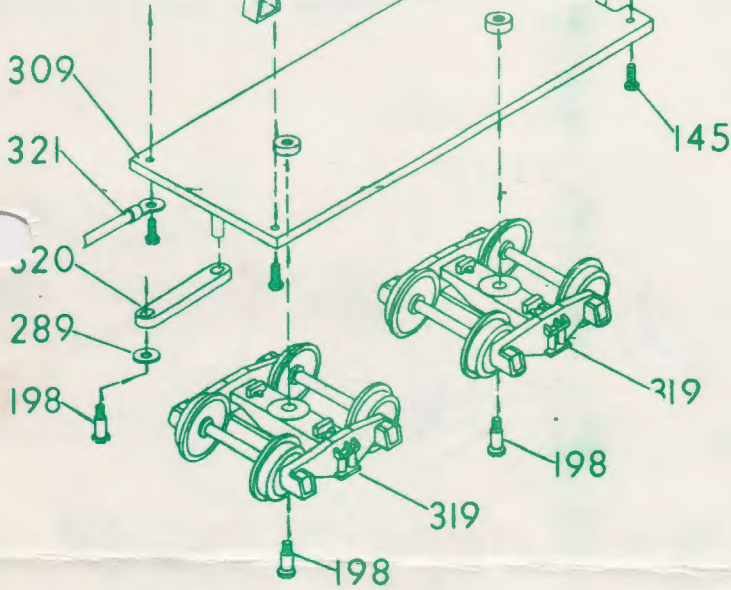
Complete conversion kit.	\$ 12.60
Belpaire fire box	\$ 3.25
Tank ends	\$ 1.90
Marker lights	\$ 1.95 pair
Keystone	\$.95
Jewels	\$ 1.00 set

REX S-GUAGE DOCKSIDE SWITCHER
PRICE LIST - PARTS

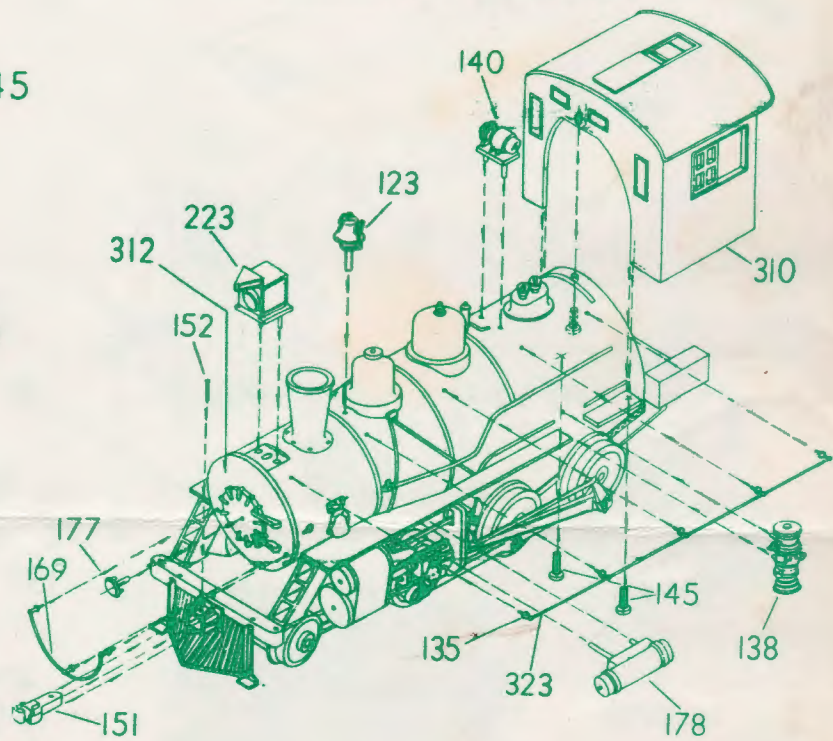
Part No.	Number Needed	Name - Description	Price Each
101	1	Cab and body	\$ 16.00
102	1	Cylinder and boiler front	\$ 8.00
112	1	48" wheels, c'pin and axle assembly, rear	\$ 3.75
115	1	Frame	\$ 14.50
116	1	48" wheels, axle and gear assembly, front	\$ 3.75
117	1	Motor, Pittman DC-71A	\$ 22.50
120	1	Crosshead and piston rod, right hand	\$ 1.50
121	1	Crosshead and piston rod, left hand	\$ 1.50
122	1	Airtank, left hand	\$.30
123	1	Bell and bracket	\$.75
124	4	Crosshead guides	\$.50 each
125	1	Pickup spring	\$.50
126	2	Grommet, rubber	\$.50 each
127	2	Screw #4-40x3/8 flat head	\$.20 each
129	1	Wire, conductor pickup to motor	\$.75
130	2	Screw, #0-80x1/4 hex head	\$.10 each
131	2	Crankpin	\$.50 each
132	4	Shoulder screw, side rod and main rod	\$ 1.00 set
133	1	Washer, #2 SAE 3/32 ID x 1/4 OD x .020	\$.10
134	1	Washer, rubber rear motor mount	\$.10
135	8	Handrail post	\$.35 each
136	2	Handrail wire	\$.20 set
137	1	Air tank and tool box	\$.40
138	1	Air compressor, single	\$.55
139	1	Backup light and bracket	\$.50
140	1	Generator	\$.50
141	1	Whistle	\$.40
142	2	Main rod	\$.50 each
143	2	Side rod	\$.40 each
144	1	Tank filler	\$.20
145	7	Screws #2-56 x 1/4 round head	\$.10 each
146	2	Washers #0 S.A.E. - Crankpin	\$.05
148	1	Guide hanger	\$ 1.75
149	1	Coverplate	\$.60
150	1	Rear bearing	\$ 1.00
153	2	Cab step	\$.40
154	1	Washer 3/16 ID x 5/16 OD x .020	\$.05
156	1	Combination speed nut pusher and box wrench	\$.65



O-6-0 SWITCHER
LOCOMOTIVE ASSEMBLY



2-6-0 ROAD TENDER &
0-6-0 SWITCHER TENDER



2-6-0 MOGUL
LOCOMOTIVE ASSEMBLY



MOGUL
REX "S" GAUGE MODELS
90 LUCY LANE
NORTHFIELD, OHIO 44067

1982

ALL PRICES EFFECTIVE OCTOBER 1.
~~BEGINNING JAN 1~~, ALL SOLDERING
AND TAPPING WILL BE DONE. MAKING
LESS WORK FOR MODELER, NO TAPS TO
BUY. POSTAGE AND INS. EXTRA ON
LOCOS.

REX "S" GAUGE MODELS

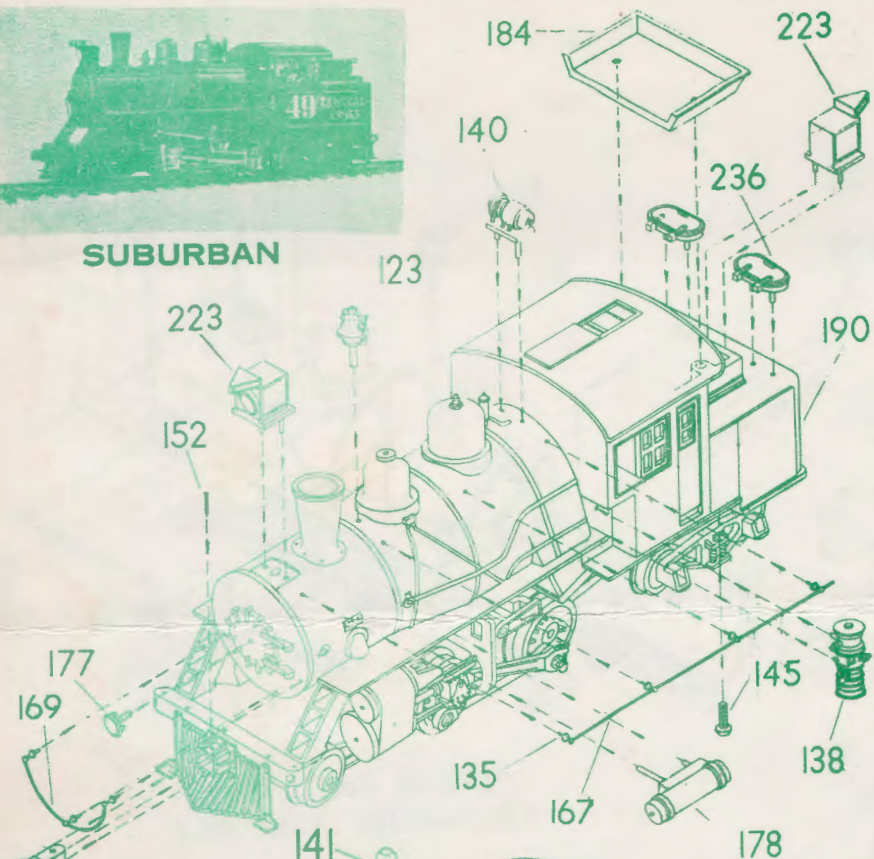
90 Lucy Lane
Northfield, Ohio 44067

By

SUDIMAK
216-467-5763



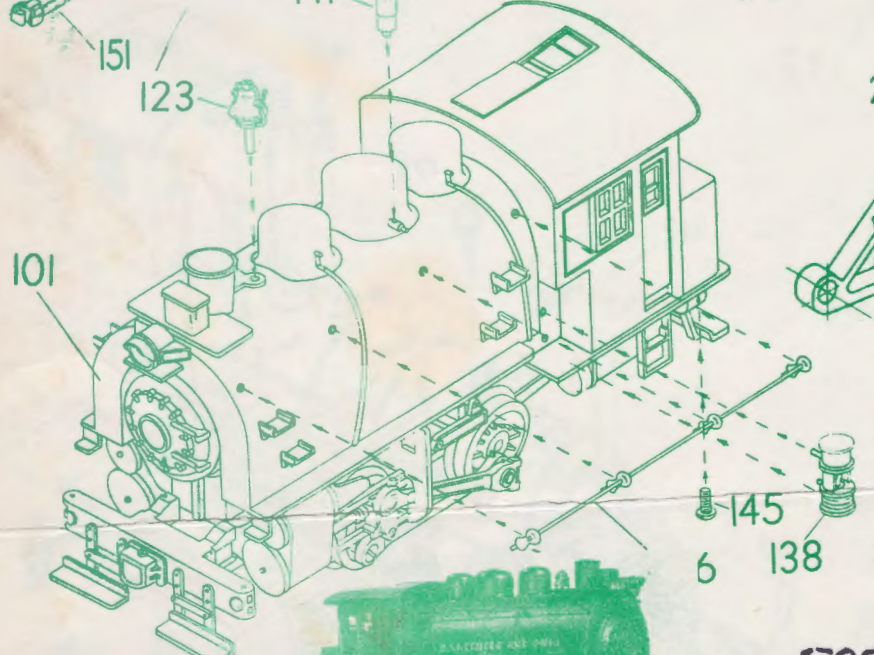
SUBURBAN



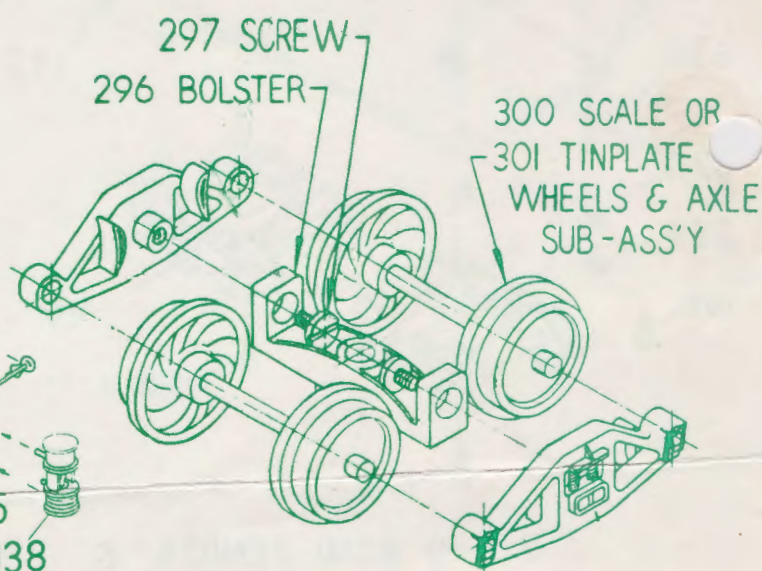
Model No. 7 Scale
\$7.00 ea.
For Rex Scale or Hirail Trucks



Model No. 8 Tinplate
\$6.00 ea.
For American Flyer Truck & Coupler Sets

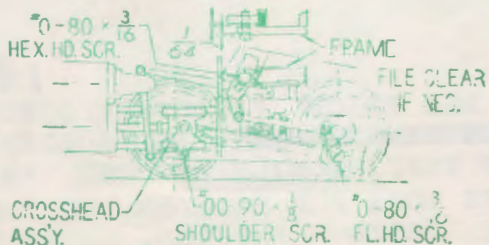


DOCKSIDE



281 COIL SPRING
5.00 Extra for Hi Rail tires
Postage & Ins 4.25

FOUR STEAM LOCOMOTIVES FROM THE GOLDEN ERA OF RAILROADING
Dockside ~~74.95~~ \$67.95 Mogul ~~146.85~~ \$112.95
Suburban ~~89.95~~ \$74.95 Switcher ~~146.85~~ \$112.95
(Prices include valve gear)

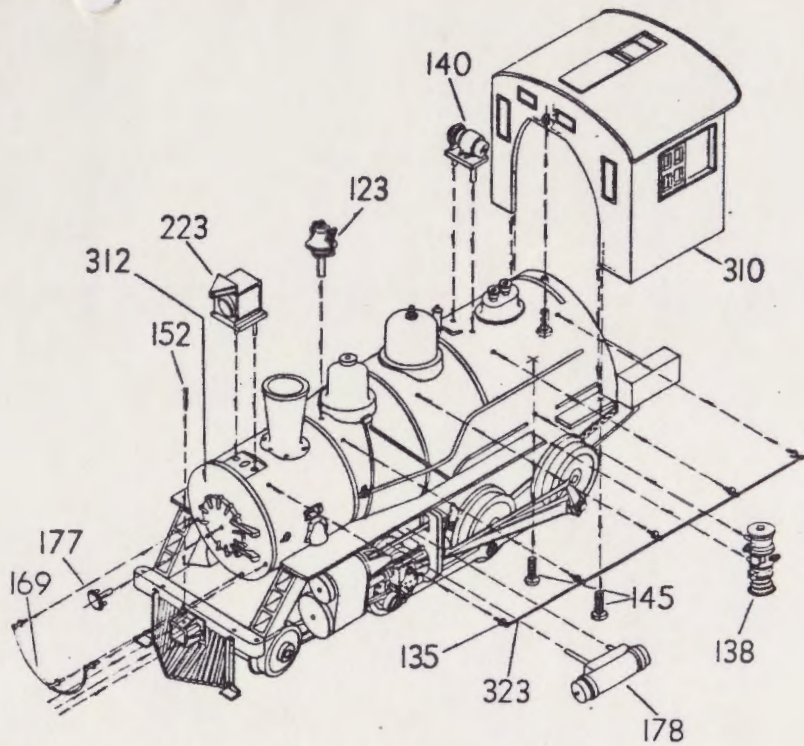


Valve Gear Assembly

OTHER REX ITEMS AVAILABLE **11.25**
Valve Gear Only ~~12.25~~
Scale Qr Hi-Rail Trucks _____ \$2.85 Pair
Diecast Low-Side Gondola, Scale _____ \$7.00 Less
Diecast Low-Side Gondola, Hi-Rail _____ \$6.00 Less
Pennay Conversion Kit (2-6-0 and 0-6-0) _____ **11.00**
(Includes Belpaire Firebox, Keystone Number Board, 2 Under-Cab Air Tanks, 4 Marker Lights And 12 Marker Light Jewels. These Are Lost Wax Castings.)

Postage on items under \$25.00 is 15%
Ohio residents please add sales tax.

Prices are subject to change without notice.
"S" is steadily growing.



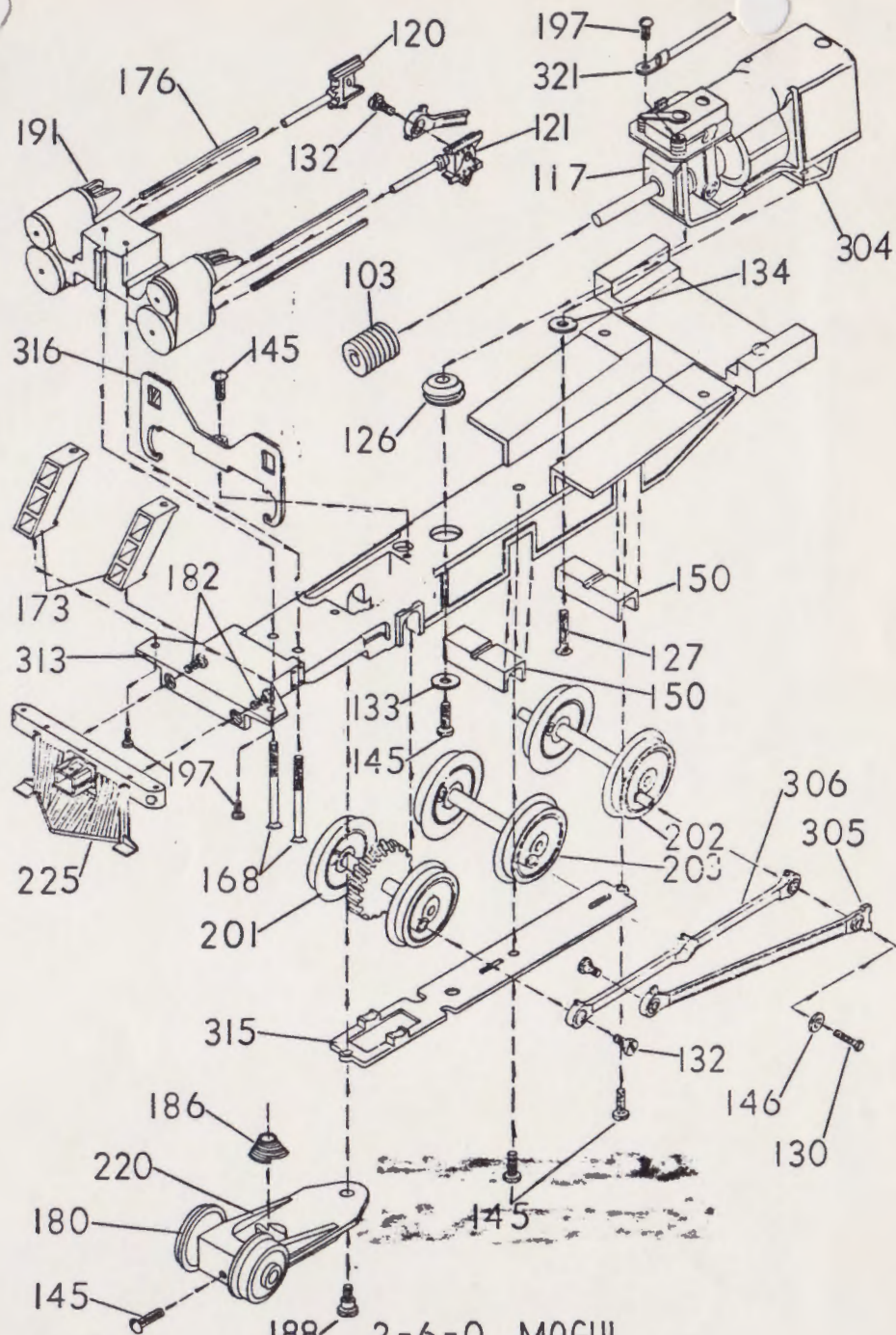
2-6-0 MOGUL
LOCOMOTIVE ASSEMBLY

56" wheel sets

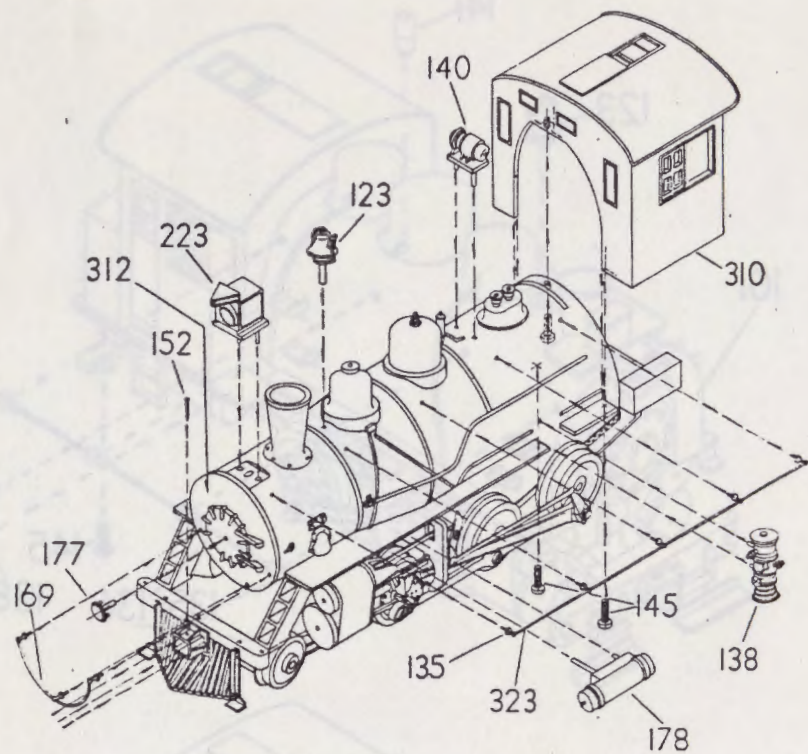
JOHN H. SUDIMAK
467-5763

Rea "S" Gauge Models
90 Lucy Lane
Northfield, Ohio 44067

90 LUCY LANE
NORTHFIELD, OHIO 44067



188 2-6-0 MOGUL
MECHANISM ASSEMBLY



2-6-0 MOGUL
LOCOMOTIVE ASSEMBLY

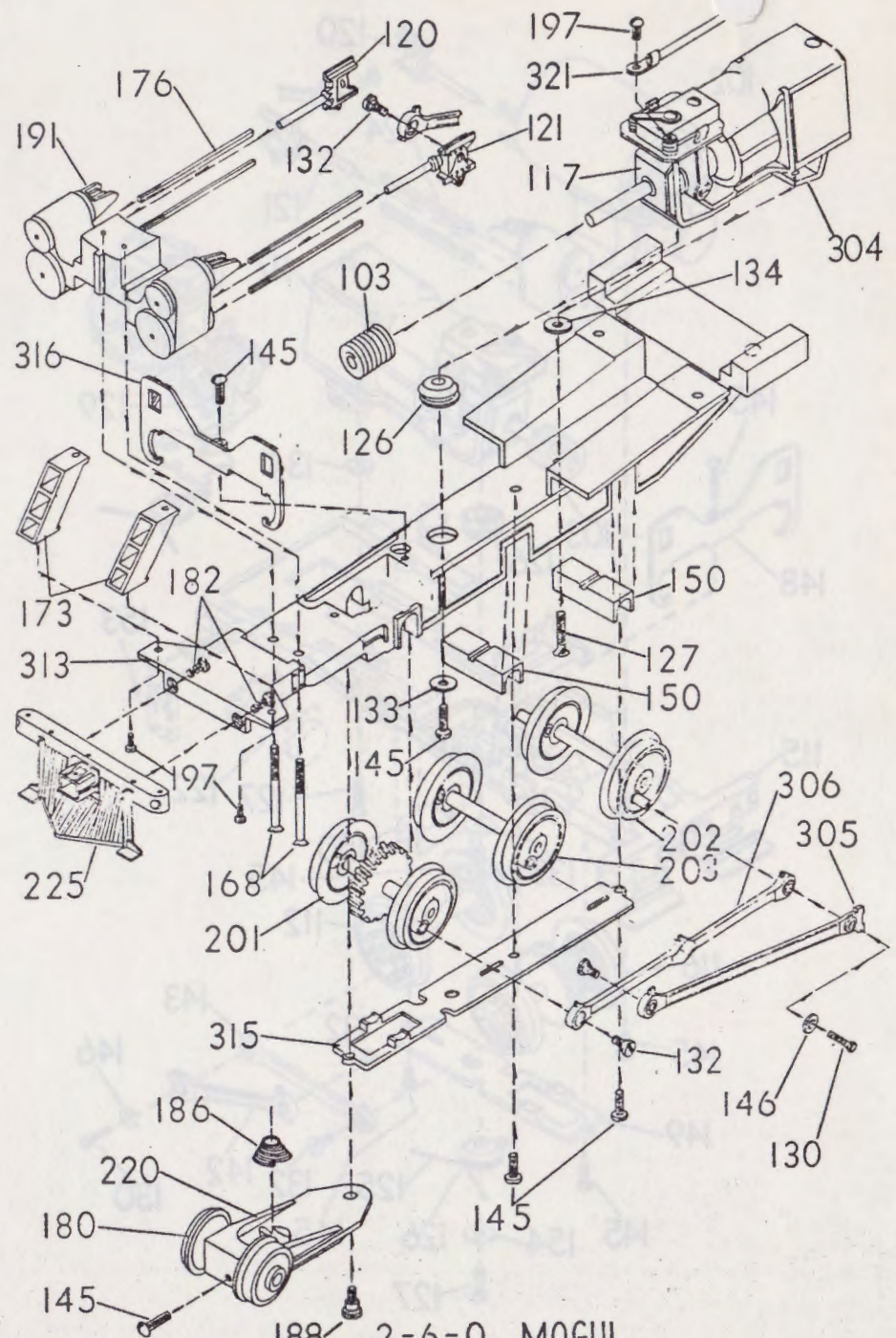
JOHN H. SUDIMAK
467-5763

S & P DISTRIBUTORS

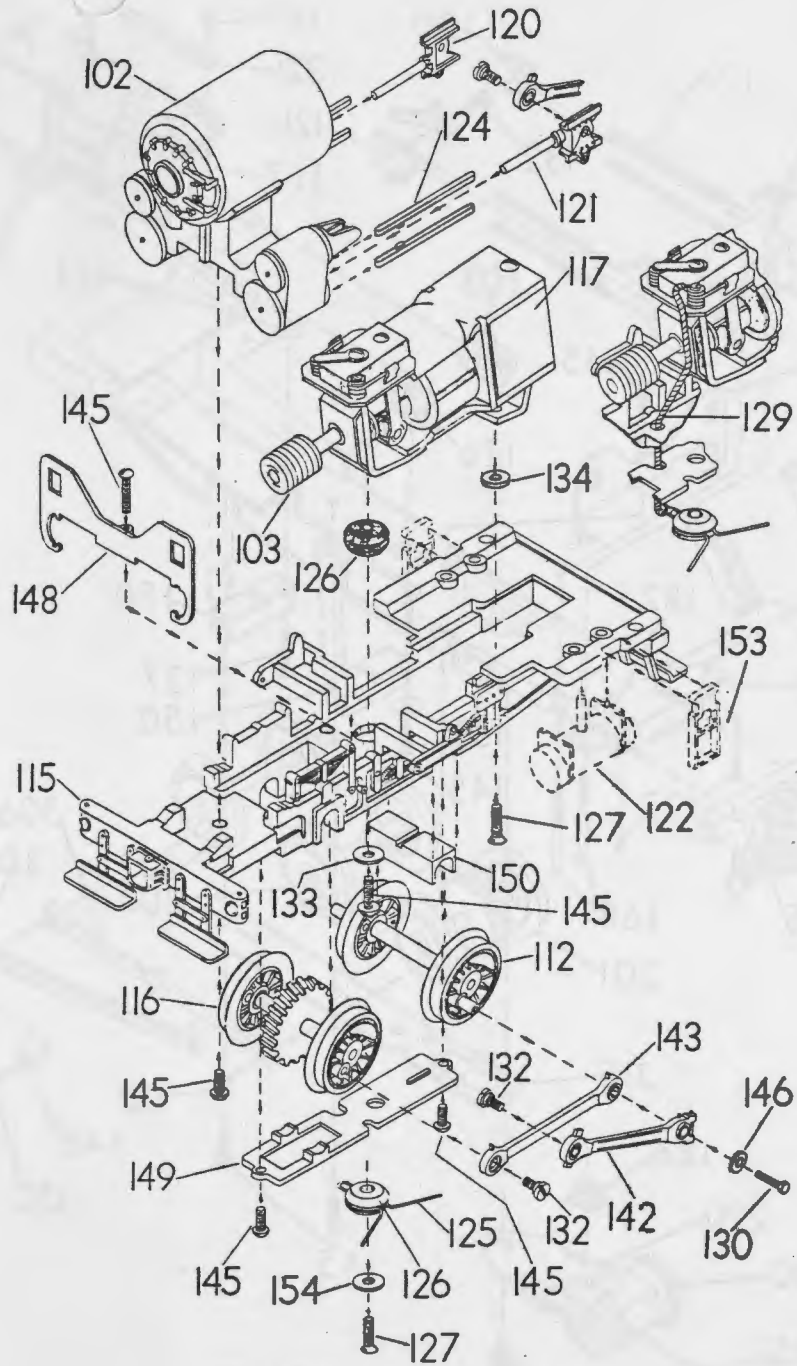
Manufacturers and Suppliers of "S" Gauge
We Deal Direct - Wholesale and Retail

90 LUCY LANE
NORTHFIELD, OHIO 44067

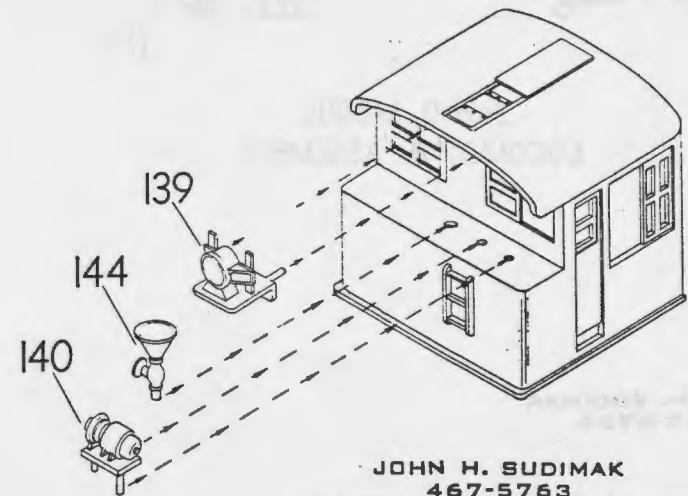
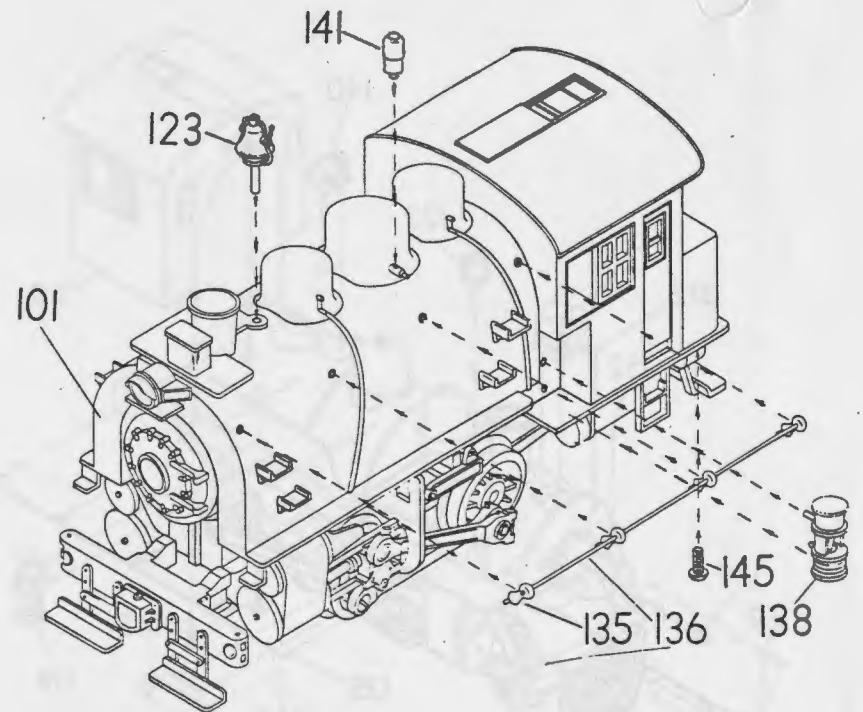
H. L. PHILLIPS
AKRON - 633-2777



188 2-6-0 MOGUL
MECHANISM ASSEMBLY



MECHANISM ASSEMBLY



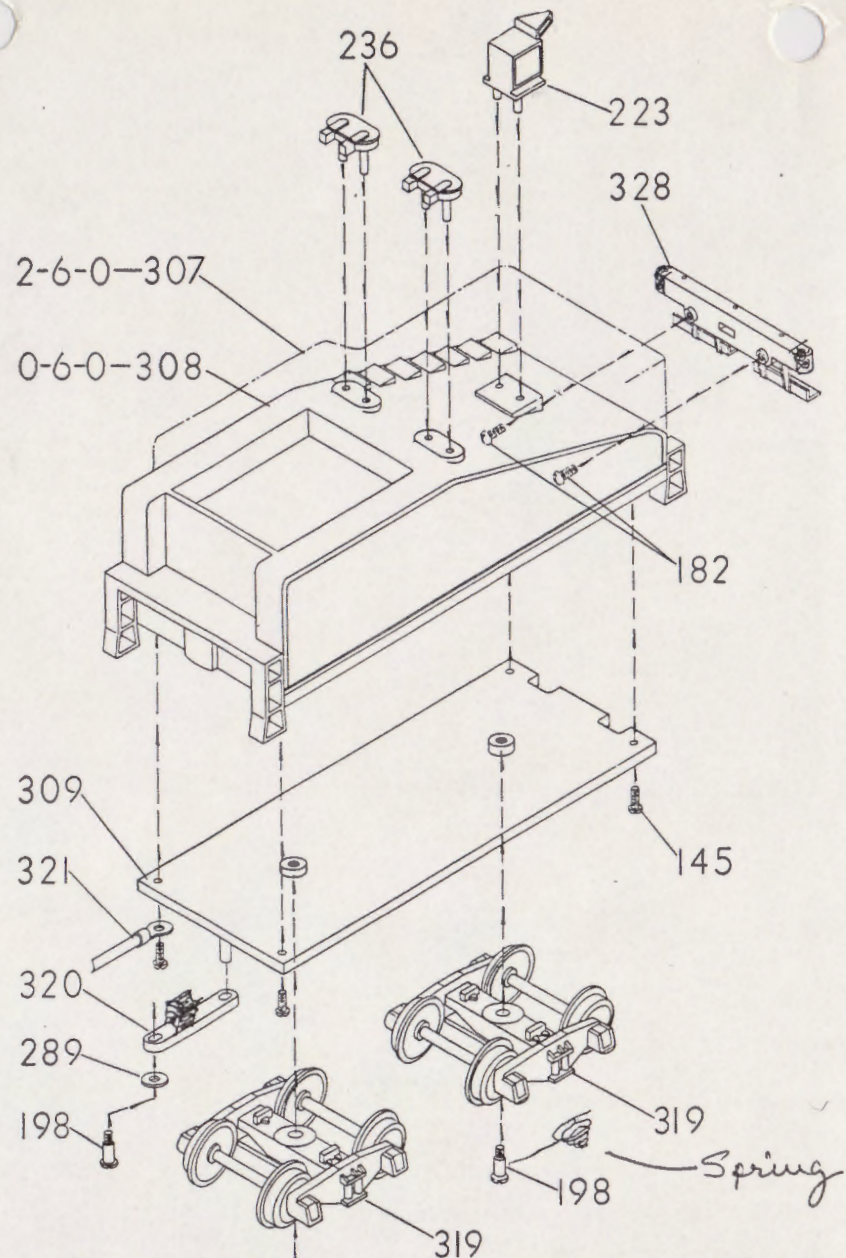
JOHN H. SUDIMAK
467-5763

S & P DISTRIBUTORS

Manufacturers and Suppliers of "S" Gauge
We Deal Direct - Wholesale and Retail

90 LUCY LANE
NORTHFIELD, OHIO 44067

H. L. PHILLIPS
AKRON - 633-2777



S & P DISTRIBUTORS
 90 LUCY LANE
 NORTHFIELD, OHIO

2-6-0 ROAD TENDER &
 0-6-0 SWITCHER TENDER

REX ENGINEERING CO.
 261 Briggs Building Birmingham, Michigan
 NORTHFIELD, OHIO