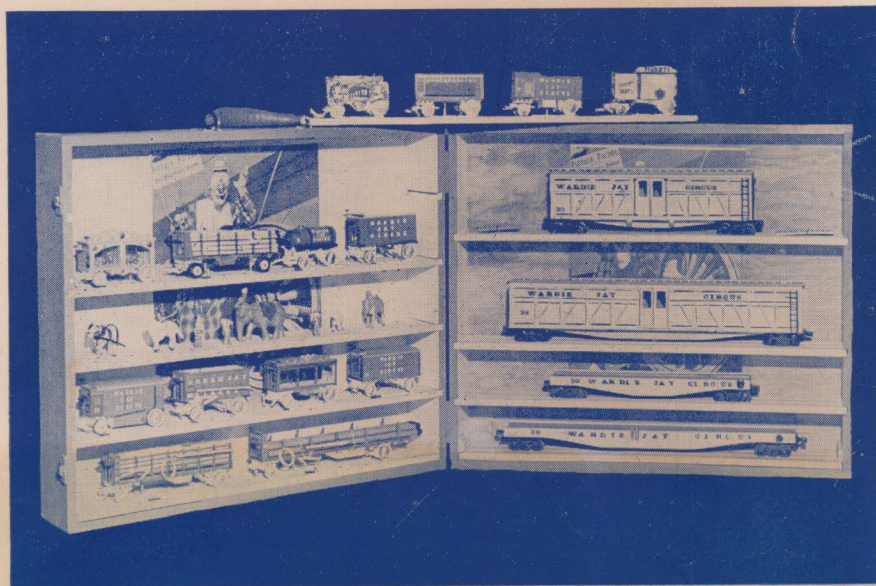


Wardie-Jay
CIRCUS

Wardie-Jay CIRCUS



"O" GAUGE — 1/4" SCALE

"HO" GAUGE — 3/5 MM SCALE

Wardie-Jay
CIRCUS

THIRTY-FIVE CENTS

MAIN ENTRANCE

WELCOME to a new and fascinating hobby. You can now realize that life long ambition to be the sole owner, manager, roustabout, parade marshal, train master, ring master, etc. of your own private circus whether it be a one hundred car Ringling Bros. and Barnum & Bailey show or a simple truck show. Complete to the last detail and yours to enjoy all year round.

Wardie-Jay kits are authentic. They contain the best materials and are designed and engineered for ease of assembly. They incorporate plenty of detail so that your finished model is a miniature of the real thing in every respect.

We will continue to add to our line from time to time and any suggestions which you have will be welcome. Let us know what you want and we will endeavor to give it to you for your continued satisfaction is our success. So here's to YOUR new Circus.

ORDERING INSTRUCTIONS

SEE YOUR DEALER FIRST!

No orders for under \$1.00 will be accepted. A 10 per cent handling charge must be added to all orders totaling less than \$2.50. Postage extra on all orders.

Payment may be included with order or we will ship C. O. D. in accordance with your instructions. Send Money Order or check if payment is sent with order. All checks are subject to final payment. DO NOT send cash with order.

Prices are subject to change without notice.

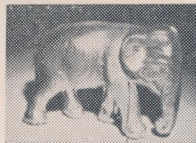
WALTERS MODERN HOBBY SHOP

Supplies for Craftsmen and Hobbyists

Established 1937

207 FRENCH ROAD

UTICA 4, NEW YORK



WARDIE - JAY

INTRODUCTION TO

BUILDING A MINIATURE CIRCUS

THE next time you attend a circus note the large number of wagons, tents and railroad cars it uses. You will wonder why so much equipment is required and how they ever figure out what they need and what goes into each piece of equipment. The whole thing seems very complex and you may say to yourself "Gosh, I wouldn't want the job of deciding what goes where and how much of each." But that is exactly what you will have to do in order to plan your miniature circus and it's really very easy.

A real circus built up around the number of acts it has and the size of its menagerie. This determines what wagons are needed to carry the show and in turn decides how many flat cars and stock cars are needed. It also will show how many people are necessary and how many passenger cars are needed to carry them. Then it also gives the owner an idea of how large a cook tent the show needs and how big a horse tent, how big a menagerie tent, side show tent and the dressing room. You see, all these are related and once they decide on their acts and animals it's easy.

Well let's tackle your show. We'll take an imaginary circus and try to figure out what equipment you will need and in this way try to give you an idea of how to go about it. Of course your final show will necessarily depend on how much you, yourself, want and how great your interest is. For example there are circus model fans who now own complete miniature circuses of from 30 to 40 cars. This consists of about 100 wagons or varying types. On the other hand there are fans who have only one or two cars on which they have lavished special care so that each piece is a collector's item. Work from whatever angle you wish.

Let us assume that your show is to be a small railroad one, that is, one which travels by rail and therefore loads all of its equipment on flat cars and its animals in stock cars. We select this type since practically everyone has a model railroad of some type and you can run your circus cars on your layout. We will say that you plan on having a two ring circus. Therefore your tent will be a three pole tent of about 150 ft. wide and 250 ft. long. Reduced to actual $\frac{1}{4}$ " scale this would be $37\frac{1}{2}$ " x $62\frac{1}{2}$ ". Now, you will need one Center Pole Wagon, four or five canvas wagons, two or three stake and chain wagons, four or five plank wagons and three or four baggage wagons. These will carry all of the poles, canvas, seats, seat jacks and stringers, ring sections, stakes, chains and pegs that are required to make up the main tent. Actually more wagons are required but these



WARDIE - JAY

will be enough to give the impression of a complete group for the one tent. To carry these wagons you will need five or six flat cars. You've now got your equipment for this portion of the show. Easy, isn't it?

Next, we'll take the menagerie tent. Let's say that you're going to have two lions, two tigers, two bears, a dozen or so monkeys, two giraffes, four or five seals, a hippopotamus and rhinoceros. This means that you will need nine cage wagons. Besides these you will have maybe twelve elephants, eight camels, twelve zebras and perhaps a pair of buffalo. Mind you, this is all theoretical and given only from the standpoint of helping you in arranging a complete circus. To carry the animals listed above you will require two or three flat cars for the cage wagons and about three stock cars for the elephants, camels, zebras and buffalo. And of course you'll need more wagons for the menagerie tent. This tent will be about 40 ft. x 60 ft. or to $\frac{1}{4}$ " scale, 10" x 15". The menagerie pole and canvas wagon will carry all of the poles for this tent as well as most of the canvas. Two stake and chain wagons will handle the stakes, chains, stanchions, and pegs for the tent and two baggage wagons will carry the other equipment including some of the smaller sections of canvas and such items as water pails, forks, etc. For these wagons you will require another flat car.

Now comes the cook tent. This is a very important part of any circus. It is the first tent up in the morning and the first one down at night. Its size will vary with the number of the personnel in the show but a tent of around 40 ft. x 60 ft., 10" x 15" the same size as the menagerie tent, will be large enough. You will require the same number of wagons for this tent as for the menagerie tent but in addition you will need a commissary wagon and perhaps two additional baggage wagons for supplies and the cooking utensils. So you will need another two flat cars.

The horse tent is next. So far we've got thirty-nine wagons and there will be a few more for the horse tent but we've got to decide first on how many horses we will need. There will have to be the ring horses, oh, about 18 and then we'll need perhaps another 50 draft horses. In all therefore, we'll have 68 horses to house in the horse tent, so we'll make it about 40 ft. x 80 ft. or 10" x 20". This tent will need two menagerie pole and canvas wagons, three or four stake and chain wagons and five or six baggage wagons. One of the baggage wagons will house the tack shop and one will be the blacksmith shop. For these wagons we will need three flat cars and to haul the horses we should have another three stock cars.

If we're going to have a dressing tent we will need another two flat cars to be loaded with six baggage wagons. These will carry the

WARDIE - JAY

props and the costumes for the performance. Aside from these we will need one canvas wagon to carry the canvas and poles for the dressing tent.

Our circus is growing but we've still got a few more wagons to build. You've got to sell tickets for your show and so you'll need at least two ticket wagons. One of these is red for the sale of the general admission tickets and one is yellow for reserved seats. Then you'll want a Calliope for your parades and for circus music, so you'll need one of this wagon. And of course we musn't forget the water wagon. You've got to haul water for the stock and personnel and on a very dry day you may want to wet down the rings and aisles in the main tent to keep down the dust. So build a tank wagon as it's really necessary. Then we musn't forget the generator wagons. These are needed to furnish electric power for lighting of the tents at night. The circus we are describing will need at least two of these. These wagons constitute another flat car load.

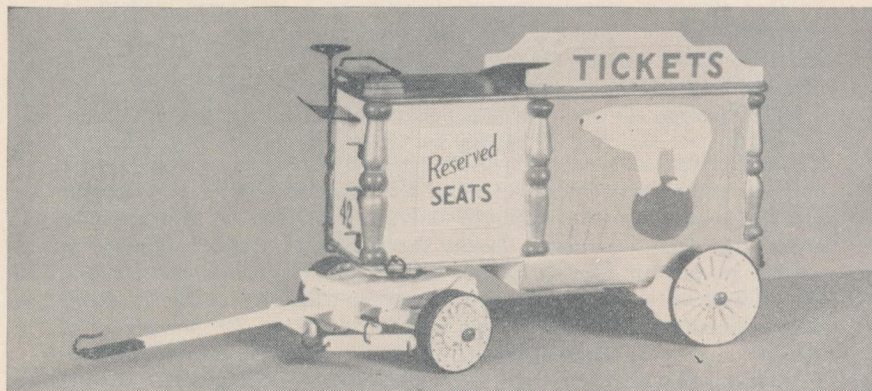
Now let's see how many wagons, flat cars and stock cars we will need for the foregoing lineup. There will be 60 wagons, 18 flat cars and 6 stock cars. Don't misunderstand us, you don't necessarily have to have all of this equipment. You can build as many or as few items as you desire. Let your own interest and ambition be your guide, but in any case we know that whether you build only one mantel piece or a complete 40 car train, that you will get the biggest thrill of your life when you behold the completed product. Get on the band wagon and treat yourself to more fun than a barrel full of monkeys!

All of the wagons and the flat and stock cars can be built from the kits listed in our catalog. The tents are not yet ready but they will be available in a short time and we'll keep you posted. Watch our ads. There are many other wagons which also go into the building of a circus and these will be offered to you as soon as time permits.

We wish to state that the foregoing may not be exactly correct insofar as the number of wagons for each unit is concerned, however, we are chiefly interested at this time in getting you started with the wagons which are available. We assure you that new items will be turned out from time to time so that eventually you will be able to obtain kits for practically all of the various types of wagons and other equipment used by circuses. In this connection we will be glad to hear from you and to have your suggestions. Don't hesitate to write to us if you would like any special kind of wagon, etc., or if you have any problems with which we can help you. Our staff is at your disposal and will gladly furnish all information which is in their possession.

WARDIE - JAY

"O" GAUGE - 1/4" SCALE YELLOW TICKET WAGON No. 42



This is where you buy your tickets if you like a reserved seat. Model is colorful and will make a real good looking addition to your circus. Kit contains cast metal posts and front running gear parts. Special decals are included for the lettering and the polar bear.

PRICE, \$2.75

Circus "Slanguage"

BIG TOP—The Main Tent where the principal performance is held.

GIVE 'EM BROWN'S COW—Ringmaster's instructions to each act as they enter to cut short the show program if a long jump is ahead or bad weather is imminent.

GOOD JUICE DAY—Sweltering hot day.

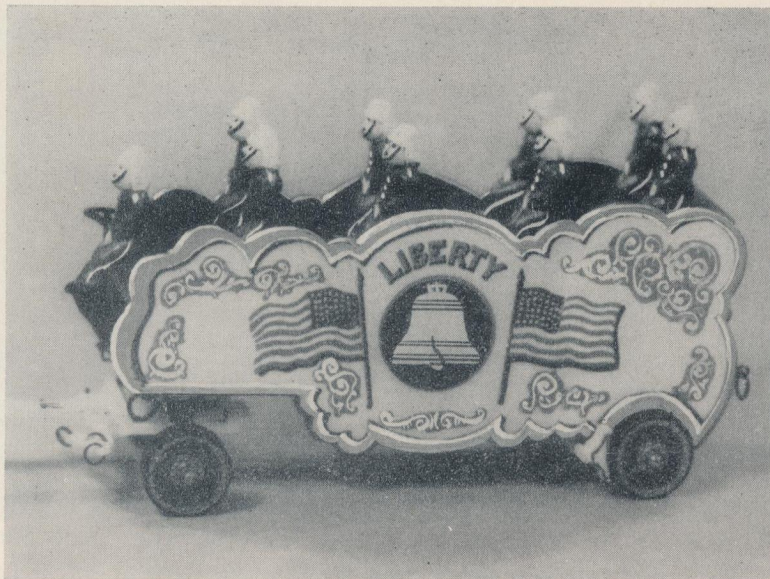
DUKET—A Circus ticket.

DUKIE—A handout lunch for Circus workingmen when they are too busy to come to the dining tent. A meal ticket.

WARDIE - JAY

BANDWAGON No. 46

"O" GAUGE

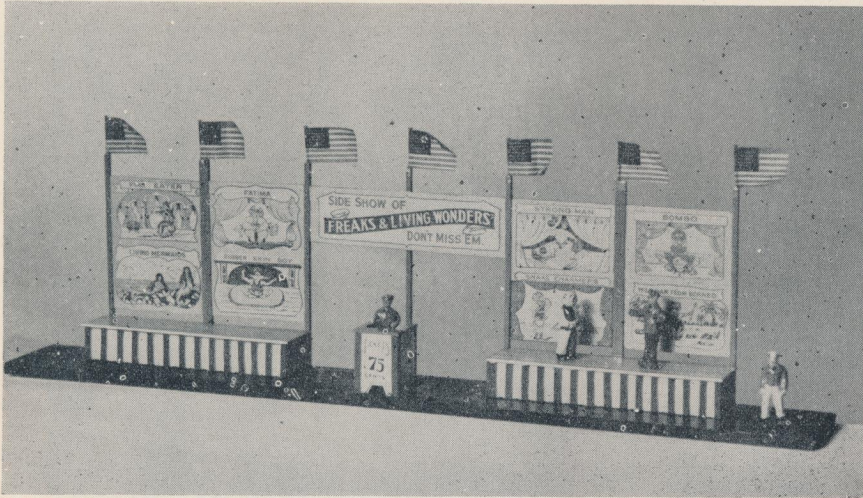


Truly the most exciting wagon to be found in the circus. Leading the street parade with the blaring of the band. Model is colorful and makes a wonderful addition to your circus. Kit contains all parts for easy assembly. Special decals for the sides include gold scrolls on red background, gold Liberty Bell and colorful flags.

PRICE \$2.95

SIDE SHOW BANNER LINE

"O" GAUGE



This is the ballyhoo of the Circus Midway. The "Side Show Banner Line." Has full color cloth banners showing all the freaks and oddities found in the Side Show. "The Rubber Skin Boy," "Fatima," the Fat Lady and six other freaks are shown. Kit contains all necessary wood and plans to make this colorful addition to your circus.

PRICE, \$1.75

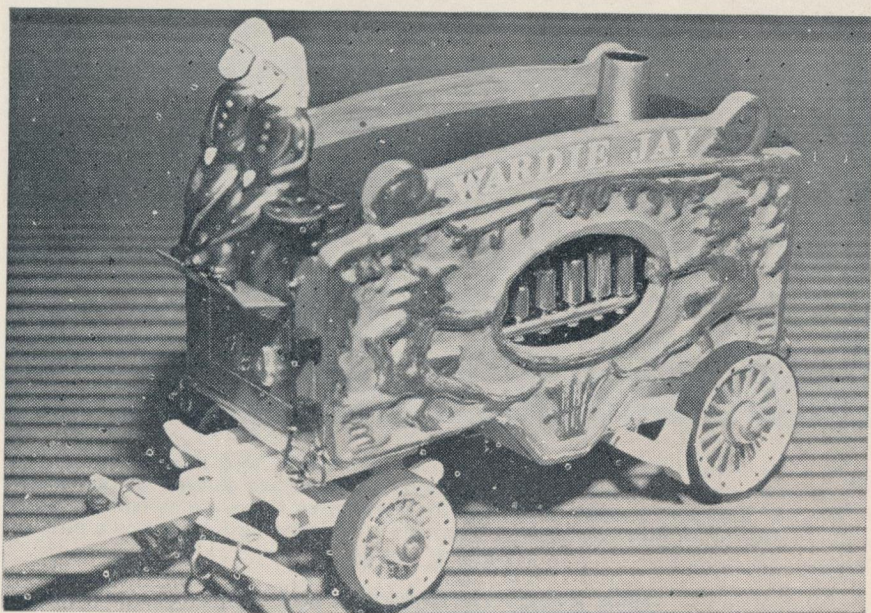
Also you'll want a ticket man (Side Show Spieler), a cast figure for use with your side show.

PRICE, \$.15

WARDIE - JAY

CALLIOPE No. 44

"O" GAUGE



The big noise in any circus parade. Cast metal sides, pipes and front running gear for good detail. You can put a music box in it and have the real thing.

SWISS MUSICAL MOVEMENT

To Fit Calliope Wagon
Tune: "Auld Lang Syne"
Price \$2.50 complete

PRICE, \$3.00



Circus "Slanguage"

TACK SPITTER—A Circus Bill poster.

LOT READER—A Circus worker who searches the lot after the show is packed up, ready to leave, for articles of equipment that may have been overlooked.

HEY RUBE!—The Circus rallying cry to call for help. The battle cry to defend the show against town hoodlums in the "good old days."

BLUES—General admission seats at the Circus.

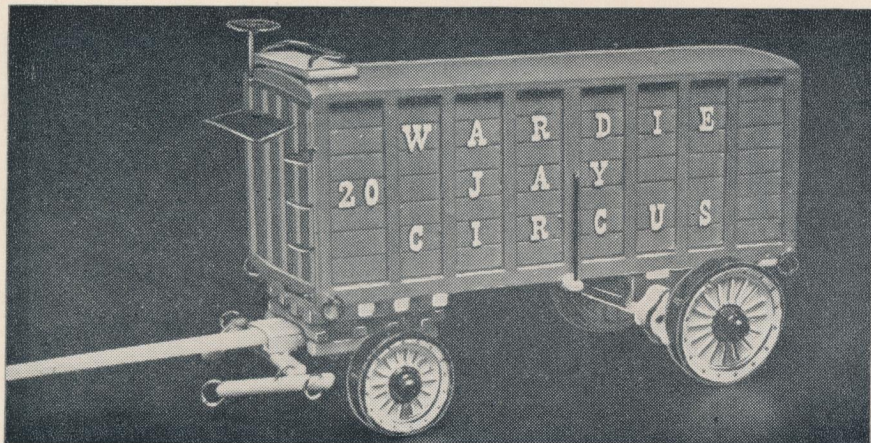
BOSS WINDJAMMER—The Circus Band Leader.

7



WARDIE - JAY

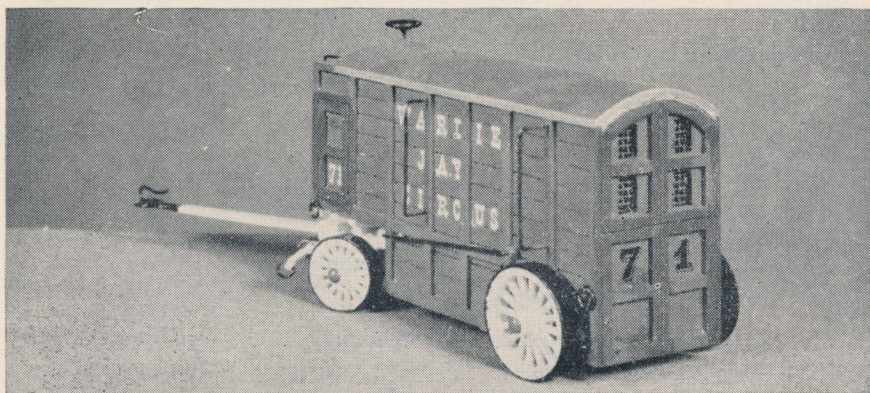
BAGGAGE WAGON No. 20 "O" GAUGE



This is the utility wagon on any show and you'll need lots of them. All wardrobes, trappings and trunks of the performers are carried in this style wagon. The more important stars of the show often times are assigned one of these wagons for a dressing room. Complete with lettering for your own circus.

PRICE, \$2.00

GIRAFFE WAGON No. 71 "O" GAUGE

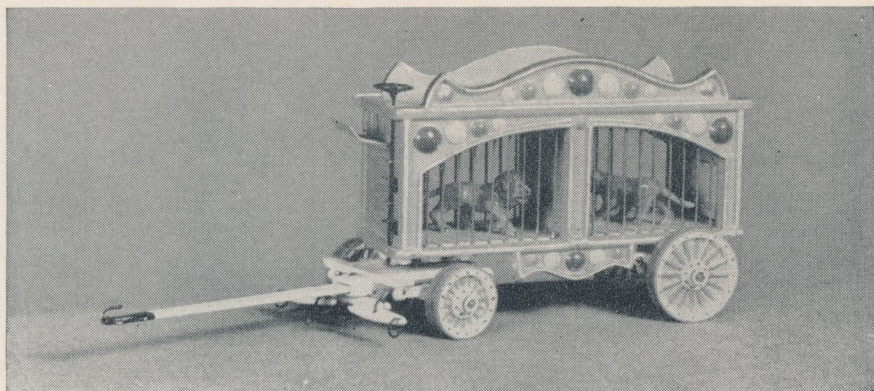


A really interesting and cute wagon with its odd shape and outside brake rods. You can make the back doors operating if you like and then pad the interior so that your valuable cargo of giraffes will not be injured in transit. Complete kit including ready shaped parts, decals and hardware.

PRICE, \$1.95

WARDIE - JAY

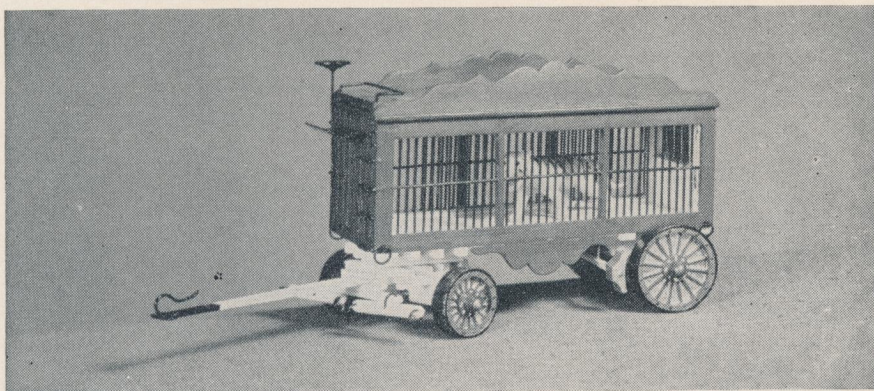
LION CAGE WAGON No. 72 "O" GAUGE



Colorful is the word which describes this wagon. It's cast metal sides can be painted in a variety of wild colors and you've got the perfect parade wagon. This wagon has cast metal running gear both front and rear. A must, definitely, on your circus.

PRICE, \$2.95

CAGE WAGON No. 70 "O" GAUGE



No circus is complete without its menagerie of wild animals and this wagon is just the ticket for carrying tigers, bears, panthers, etc. They can't get out of this cage easily. Patented strips are furnished for spacing the bars also special trim decals.

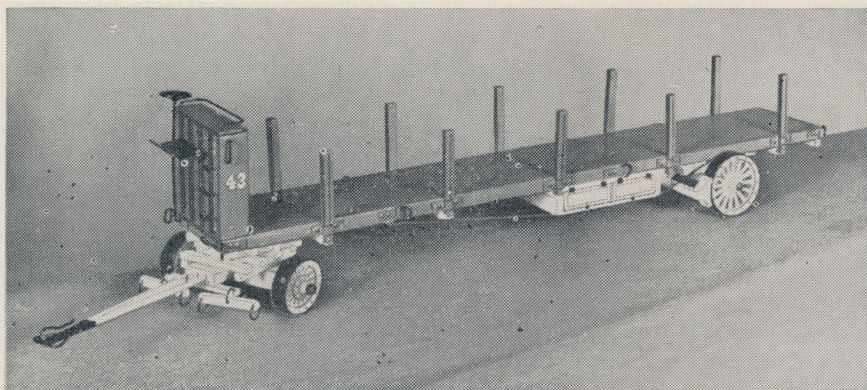
PRICE, \$2.50

9



WARDIE - JAY

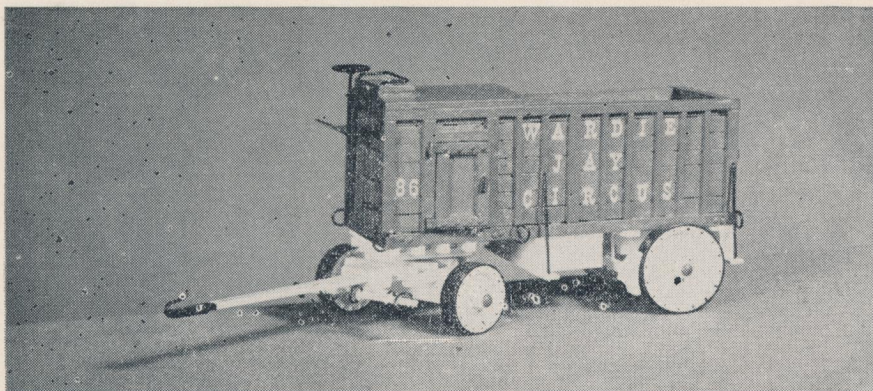
BIG TOP CENTER POLE WAGON No. 43 "O" GAUGE



The top of the tree is always the bottom of tent pole but that's another story. This wagon carries the long ones. Kit contains all parts including stake pockets and number decals.

PRICE, \$1.95

STAKE and CHAIN WAGON No. 86 "O" GAUGE



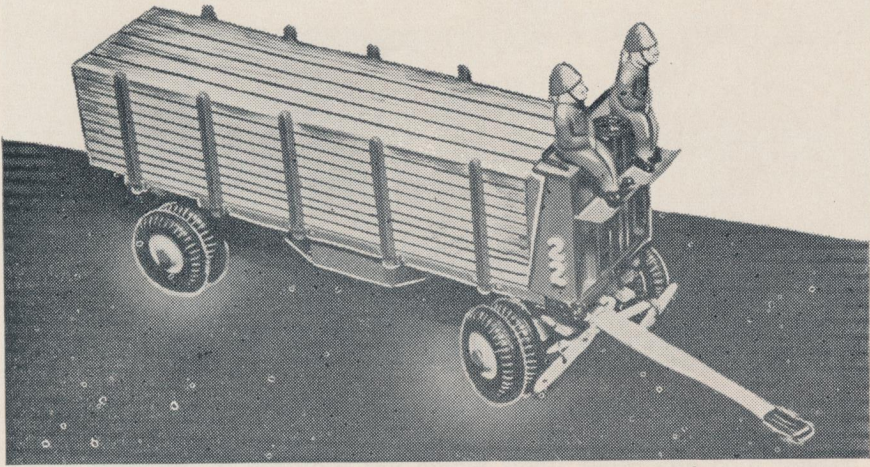
Stakes for pegging down the big top and chains for all purposes are carried in this wagon. It is an important piece of equipment in all circuses. Complete kit with all detail included.

PRICE, \$1.95

10

WARDIE - JAY

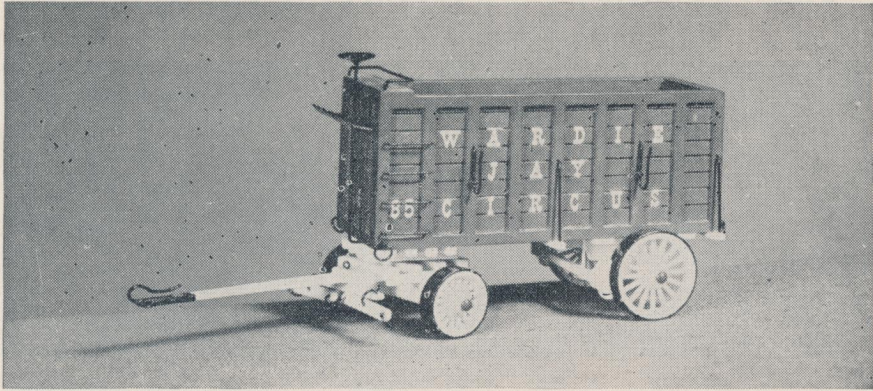
PLANK WAGON No. 22 "O" GAUGE



You must have seats for the customers and the planks for these are carried on this wagon. A large show will carry several of them. Complete with hardware and decals.

PRICE, \$1.50

SIDE SHOW CANVAS WAGON No. 85 "O" GAUGE

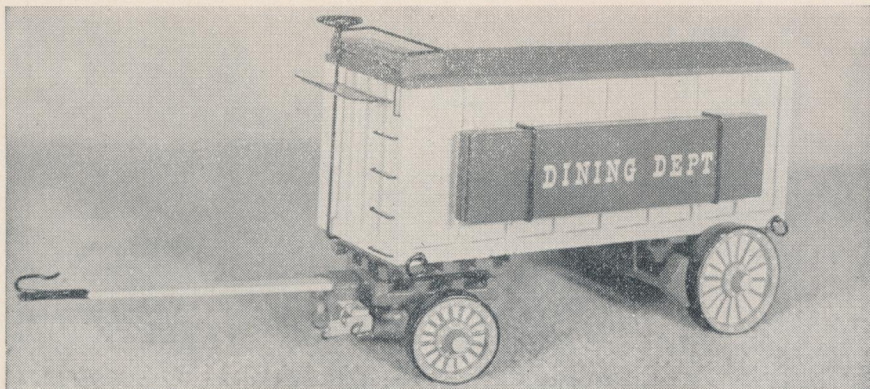


Canvas is needed to house your side show and a wagon is needed to carry it. You will find this one complete to the last detail and colorful too. May also be used for carrying canvas for other tents.

PRICE, \$1.75

WARDIE - JAY

COOKHOUSE WAGON No. 17

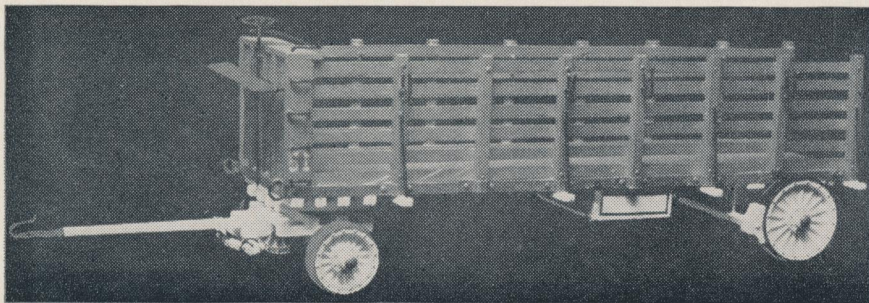


The most important part of the circus in so far as the personnel is concerned. They've got to eat and this wagon carries the tents, tables, food and other items which are required in the cook tent. Kit contains all necessary parts including hardware, special decals, and material for making up eight tables. Definitely a must on your show.

PRICE, \$2.25



MENAGERIE POLE and CANVAS WAGON No. 51



This wagon carries the poles and canvas for the menagerie or animal tent. It's a must for any circus large or small. Kit comes with all hardware including stake pockets and a set of number decals.

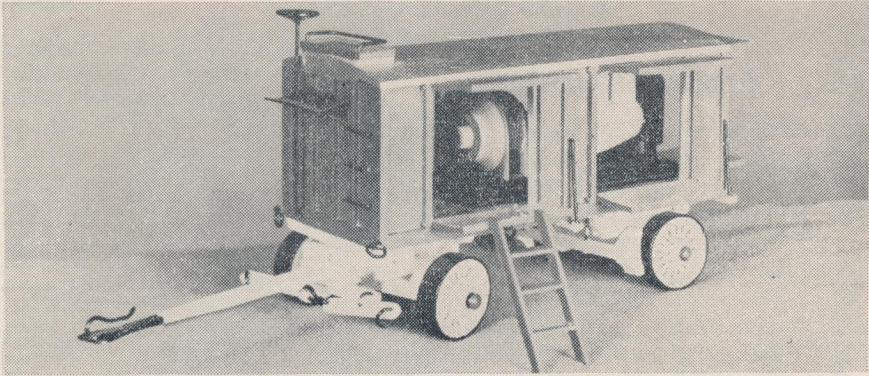
PRICE, \$1.95

12



WARDIE - JAY

GENERATOR WAGON No. 11



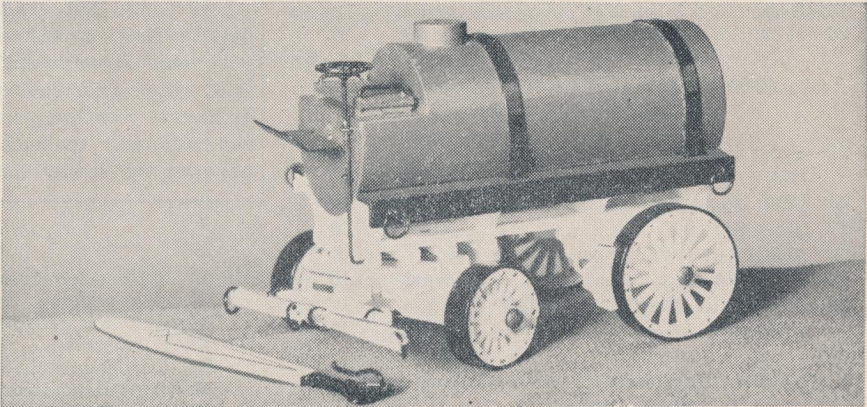
This wagon supplies the electric power required for lighting the big top and other tents. It is a must on any show or for that matter any carnival too. Model has working doors so that you can mount a generator in the wagon. Kit contains all ready cut parts, hardware and decals.

PRICE, \$1.95 ✓

GENERATOR KIT TO USE WITH GENERATOR WAGON

This kit contains a cast metal generator, and radiator. Parts necessary to mount generator in wagon plus plans. Price 90¢

TANK WAGON No. 10



Dust is not welcome around the big show and the animals and cookhouse needs plenty of water. Tank is formed and all holes are drilled. Kit includes hardware and decals.

PRICE, \$2.00

WARDIE - JAY

ACCESSORIES FOR "O" GAUGE

HARDWARE PARTS

CSP-60	Calliope Sides, Cast Metal	pair	\$.50
61	Calliope Pipes, Cast Metal	pair	.25
62	Cage Wagon Sides, Cast Metal	pair	.50
63	Wire Spacers for Cage Wagons, brass	each	.05

ACCESSORIES

CSP-1	Tongue, Wagon	each	\$.10
5	Brake Shoes	pair	.15
6	Fifth Wheels	doz.	.30
7	Front Wheel, Die Cast Metal 3/4" diam.	pair	.25
8	Rear Wheel, Die Cast Metal 1" diam.	pair	.25
9	Wheel Axle Pins, No. 15—3/4" Escutcheon Pin	doz.	.05
11	Brake Wheels	each	.08
12	Foot Boards, Small 21/32"	pair	.15
13	Foot Boards, Large 13/16"	each	.08
14	Hip Ring Brackets	each	.03
15	Stake Pockets	each	.05
16	1/8" Steps	each	.03
17	3/16" Rings	doz.	.10
18	1/4" Rings	doz.	.15
19	Eye Stems	doz.	.15
20	Brake Rod Wire 2 1/2" long	each	.01
26	Wire 1/32" diam. x 8 1/2" long	each	.02

Cast Metal Running Gear for use with Cast Metal Wheels

CSP-21	Cross Gear set of 3 for front Running Gear	set	\$.10
22	Rear Springs	each	.10
23	Side Springs	pair	.10
24	Front Axle, Wood 1/8" x 1/8" x 1 7/16"	each	.10
25	Rear Axle, Wood 3/16" x 3/16" x 1 7/16"	each	.10

Running Gear Parts for use with Dual Plastic Wheels

CSP-27	Rear Axle 3/16" x 9/16" x 1 1/8"	each	\$.10
28	Rear Axle Braces 5/32" x 1/4" x 1" pair		.10
29	Front Axle 3/16" x 1/4" x 1 1/8"	each	.10

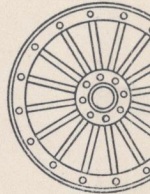
CAST METAL

These figures are sold unpainted and require very little cleaning up. Draft horses have a collar cast into them and cast metal

Elephants	
Ring Horses	
Draft Horses	
Zebras	
Camels	
Clowns	
Drivers	
Lion Lying Down	
Lion Standing	
Tiger Lying Down	
Tiger Standing	
Side-Show Ticket Man	
Roustabout	

REAL SCALE

We can't resist giving these special attention. Our wheels are precision diecast. They are a faithful and beautiful reproduction of old time 16 spoke circus wagon wheels with full rivet detail. They come to you with no flash and with the axle holes drilled. If you like, you can cut away the web between the spokes for



Set of Four
50c

DECAL

CSP-32	3/16" Alphabet and Numerals,
33	3/8" Alphabet and Numerals, Bl
34	Red "TICKETS" for yellow tick
35	Polar Bear
36	Red Numerals "42" for yellow t
39	Red "Reserved Seat" for yellow
40	Set of Decals for yellow ticket
41	"DINING DEPT." decal for cool
42	Scrolls for cage wagons
43	Hippo Decal for wagons
44	Elephant Decal for wagons



WARDIE - JAY

FIGURES

Names are supplied with each.
Ring horses have the bridle and
bare back harness also cast into
them.

.....	each \$.75
.....	"	.50
.....	"	.50
.....	"	.20
.....	"	.60
.....	"	.15
.....	"	.15
.....	"	.15
.....	"	.15
.....	"	.15
.....	"	.15
.....	"	.15
.....	"	.15
.....	"	.15
.....	"	.15

WHEELS

a real spoked wheel. Or
you can drill holes be-
tween the web and the
tire and you've got a
sunburst wheel. Used as
is, you can paint in the
spoke detail and you've
got the best circus
wheel that money can
buy. We are very proud
of these wheels and you
will understand our
pride when you see
them for yourself.



our

.....	each \$.15
.....	each	.20
.....	pair	.10
.....	each	.15
.....	pair	.02
.....	each	.08
.....	each	.40
.....	pair	.10
.....	set	.15
.....	each	.15
.....	each	.15

ACCESSORIES

FOR "O" GAUGE

WOOD PARTS

45	Standard Roof Section for Wagons 18" long	each \$.40
46	Standard Side and End Section for Wagon, Scribed 18" long	each	.30
47	Standard Floor Section for Wagons, 18" long	each	.25
48	70 ft. Flat Car Floor, Scribed	each	.40
49	70 ft. Stock Car Floor	each	.35
50	50 ft. Flat Car Floor, Scribed	each	.30
51	50 ft. Stock Car Floor	each	.25
52	Stock Car Ends, Machined	each	.15
53	Stock Car Roof, 70 ft. Machined	each	.50
54	Stock Car Roof, "SHORTIE" Machined	each	.35
55	Roof Walks and Flat Car Runs, 18" long	each	.15
56	70 ft. Flat Car Sides	each	.20
57	50 ft. Flat Car Sides	each	.15
58	70 ft. Flat and Stock Car Center Sills	each	.40
59	50 ft. Flat and Stock Car Center Sills	each	.25

Running Gear Parts for use with Cast Metal Wheels

CPS- 2	Front Axle 3/16" x 1/4" x 1 7/16"	each \$.10
3	Rear Axle 3/16" x 7/16" x 1 7/16"	each	1/4 .10
4	Rear Axle Braces 5/32" x 1/4" x 1 3/16"	pair	.10

Wood — Straight, Clear Grained

1/16" x 1/16" x 18"	each \$.03
1/16" x 1/16" x 18"	each	.03
1/16" x 1/8" x 18"	each	.03
1/16" x 3/16" x 18"	each	.03
3/32" x 3/32" x 18"	each	.03
1/32" x 5/32" x 18"	each	.04
1/32" x 3/16" x 18"	each	.04
1/8" x 1/8" x 18"	each	.04
3/16" x 3/16" x 18"	each	.04
Wood Angle 1/8" x 1/8" x 18"	each	.08



ACCESSORIES FOR "O" GAUGE

HARDWARE PARTS

- CSP-60 Calliope Sides, Cast Metalpair \$.50
- 61 Calliope Pipes, Cast Metalpair .25
- 62 Cage Wagon Sides, Cast Metalpair .50
- 63 Wire Spacers for Cage Wagons, brasseach .05

ACCESSORIES

- CSP- 1 Tongue, Wagoneach \$.10
- 5 Brake Shoespair .15
- 6 Fifth Wheelsdoz. .30
- 7 Front Wheel, Die Cast Metal 3/4" diam.pair .25
- 8 Rear Wheel, Die Cast Metal 1" diam.pair .25
- 9 Wheel Axle Pins, No. 15-3/4" Escutcheon Pindoz. .05
- 11 Brake Wheelseach .08
- 12 Foot Boards, Small 21/32"pair .15
- 13 Foot Boards, Large 13/16"each .08
- 14 Hip Ring Bracketseach .03
- 15 Stake Pocketseach .05
- 16 1/8" Stepseach .03
- 17 3/16" Ringsdoz. .10
- 18 1/4" Ringsdoz. .15
- 19 Eye Stemsdoz. .15
- 20 Brake Rod Wire 2 1/2" longeach .01
- 26 Wire 1/32" diam. x 8 1/2" longeach .02

Cast Metal Running Gear for use with Cast Metal Wheels

- CSP-21 Cross Gear set of 3 for front Running Gearset \$.10
- 22 Rear Springseach .10
- 23 Side Springspair .10
- 24 Front Axle, Wood 1/8" x 1/8" x 1 7/16"each .10
- 25 Rear Axle, Wood 3/16" x 3/16" x 1 7/16"each .10

Running Gear Parts for use with Dual Plastic Wheels

- CSP-27 Rear Axle 3/16" x 9/16" x 1 1/8"each \$.10
- 28 Rear Axle Braces 5/32" x 1/4" x 1" pair .10
- 29 Front Axle 3/16" x 1/4" x 1 1/8"each .10

CAST METAL FIGURES

These figures are sold unpainted and require very little cleaning up. Draft horses have a collar cast into them and cast metal hames are supplied with each. Ring horses have the bridle and bare back harness also cast into them.

- Elephantseach \$.75
- Ring Horses50
- Draft Horses50
- Zebras20
- Camels60
- Clowns15
- Drivers15
- Lion Lying Down15
- Lion Standing15
- Tiger Lying Down15
- Tiger Standing15
- Side-Show Ticket Man15
- Roustabout15

ACCESSORIES FOR "O" GAUGE

WOOD PARTS

- 45 Standard Roof Section for Wagons 18" longeach \$.40
- 46 Standard Side and End Section for Wagon, Scribed 18" longeach .30
- 47 Standard Floor Section for Wagons, 18" longeach .25
- 48 70 ft. Flat Car Floor, Scribedeach .40
- 49 70 ft. Stock Car Flooreach .35
- 50 50 ft. Flat Car Floor, Scribedeach .30
- 51 50 ft. Stock Car Flooreach .25
- 52 Stock Car Ends, Machinedeach .15
- 53 Stock Car Roof, 70 ft. Machinedeach .50
- 54 Stock Car Roof, "SHORTIE" Machinedeach .35
- 55 Roof Walks and Flat Car Runs, 18" longeach .15
- 56 70 ft. Flat Car Sideseach .20
- 57 50 ft. Flat Car Sideseach .15
- 58 70 ft. Flat and Stock Car Center Sills each .40
- 59 50 ft. Flat and Stock Car Center Sills each .25

Running Gear Parts for use with Cast Metal Wheels

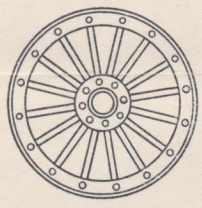
- CPS- 2 Front Axle 3/16" x 1/4" x 1 7/16" each \$.10
- 3 Rear Axle 3/16" x 7/16" x 1 7/16" each 1/4 .10
- 4 Rear Axle Braces 5/32" x 1/4" x 1 3/16"pair .10

Wood — Straight, Clear Grained

- 1/16" x 1/16" x 18"each \$.03
- 1/16" x 1/16" x 18"each .03
- 1/16" x 1/8" x 18"each .03
- 1/16" x 3/16" x 18"each .03
- 3/32" x 3/32" x 18"each .03
- 1/32" x 5/32" x 18"each .04
- 1/32" x 3/16" x 18"each .04
- 1/8" x 1/8" x 18"each .04
- 3/16" x 3/16" x 18"each .04
- Wood Angle 1/8" x 1/8" x 18"each .08

REAL SCALE WHEELS

We can't resist giving these special attention. Our wheels are precision diecast. They are a faithful and beautiful reproduction of old time 16 spoke circus wagon wheels with full rivet detail. They come to you with no flash and with the axle holes drilled. If you like, you can cut away the web between the spokes for a real spoked wheel. Or you can drill holes between the web and the tire and you've got a sunburst wheel. Used as is, you can paint in the spoke detail and you've got the best circus wheel that money can buy. We are very proud of these wheels and you will understand our pride when you see them for yourself.



Set of Four
50c

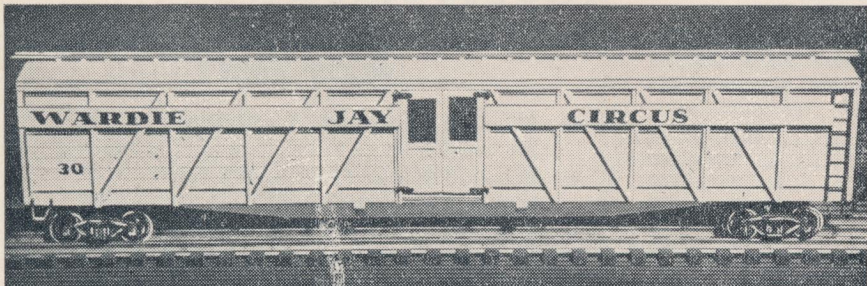
DECALS

- CSP-32 3/16" Alphabet and Numerals, whiteeach \$.15
- 33 3/8" Alphabet and Numerals, Blackeach .20
- 34 Red "TICKETS" for yellow ticket wagonpair .10
- 35 Polar Beareach .15
- 36 Red Numerals "42" for yellow ticket wagonpair .02
- 39 Red "Reserved Seat" for yellow ticket wagoneach .08
- 40 Set of Decals for yellow ticket wagoneach .40
- 41 "DINING DEPT." decal for cookhouse wagonpair .10
- 42 Scrolls for cage wagonsset .15
- 43 Hippo Decal for wagonseach .15
- 44 Elephant Decal for wagonseach .15



WARDIE - JAY

70 ft. STOCK CAR No. 30 "O" GAUGE

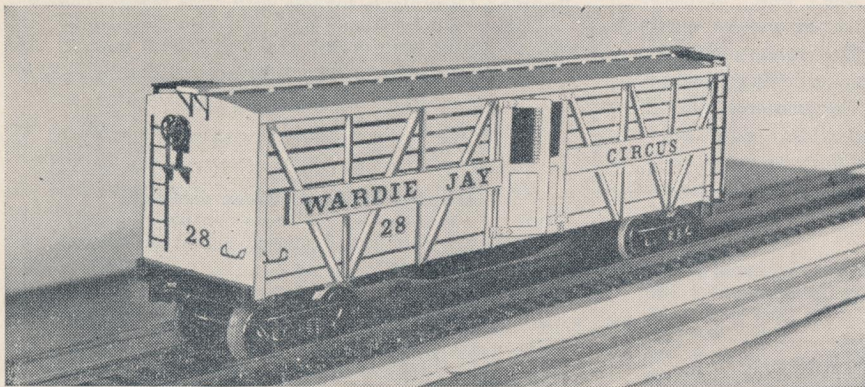


Stock cars are used to haul the elephants, horses, camels and zebras. Several of these are required for each circus train. Kits are complete with machined roof, floor and ends and all parts cut to size. Wood angle is used for outside bracing. No hardware in these kits, but decals are included.

PRICE, \$2.95

HARDWARE FOR STOCK CARS \$1. •

"SHORTIE" STOCK CAR No. 28 "O" GAUGE



Designed for use on tinplate layouts. Same construction throughout as the 70 ft. car.

PRICE, \$2.75

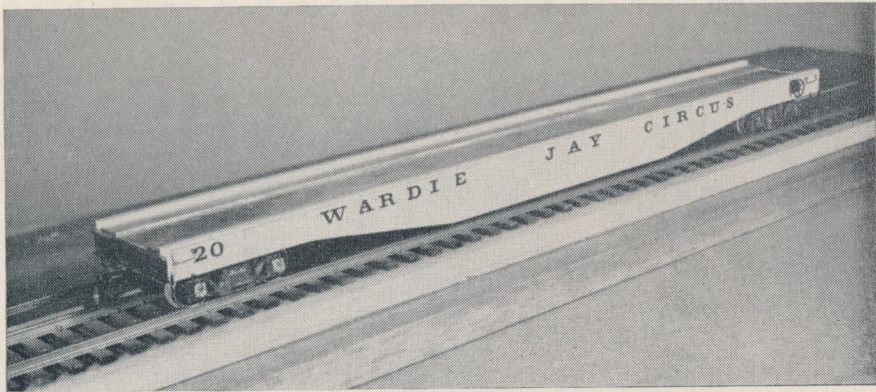
16



WARDIE - JAY

2

70 ft. FLAT CAR No. 20
"O" GAUGE



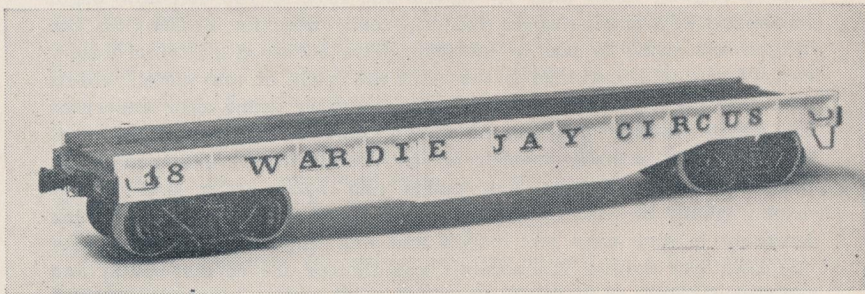
These cars are needed to carry your wagons and they make up the bulk of your circus train. A real hotshot for any model railroad. Decals included but no hardware.

PRICE, \$1.50 ✓

● HARDWARE FOR FLAT CARS 50¢

"SHORTIE" FLAT CAR No. 18

"O" GAUGE



This car is designed for use on tinplate layouts. It is identical to the standard 70 ft. car except that it is shorter in length.

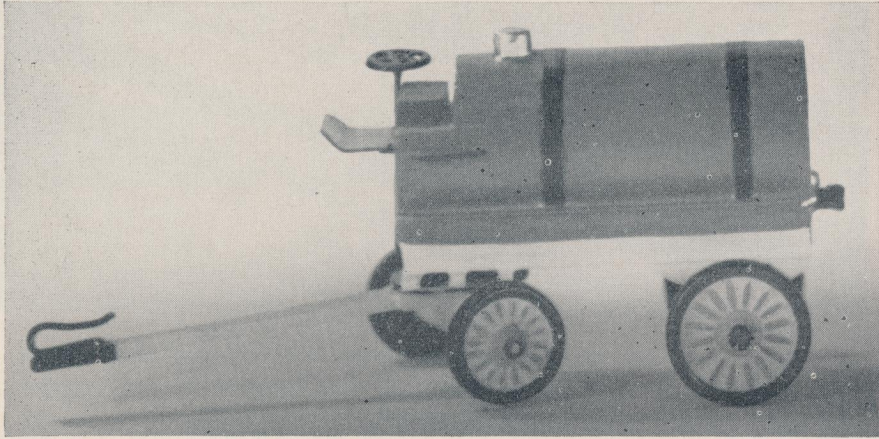
PRICE, \$1.40

17



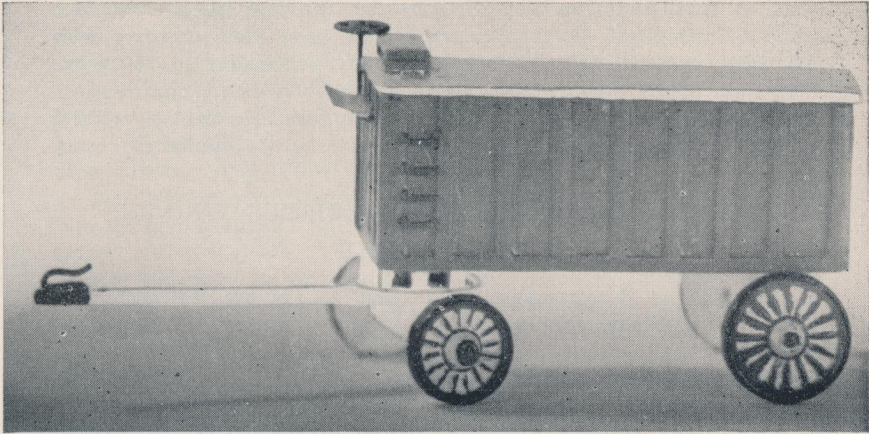
WARDIE-JAY

WARDIE-JAY HO-GAUGE CIRCUS



With WARDIE-JAY CIRCUS KITS even YOU can make your wish for a miniature circus come true. The WARDIE-JAY CIRCUS has all been planned for YOU in a scale so small that a table top will hold a great many things. A horse only about an inch high. People less than an inch high. Cage Wagons about 2" long. A scale known to model railroaders as the HO Scale in which $3\frac{1}{2}$ millimeters equals one foot. This is slightly more than $\frac{1}{8}$ " equals one foot, so you can now begin to see just how small a space you will really need for YOUR CIRCUS. Wagon kits come to you in kit form with all wood parts accurately cut, wagons with carvings in the sides are made of cast metal, wheels are 16 spoke type also of cast metal, movable front axle undergear for every wagon, pre-shaped wagon tongues, formed metal foot boards which actually operate as in the prototype, stamped metal fifth wheels, pre-formed foot rungs and hand grabs, and clearly drawn plans of either isometric or exploded view style making assembly a very easy job indeed and one that requires only about one hour per wagon. All animals and figures are of cast metal and unpainted. But painting instructions appearing elsewhere in this booklet show how easy this seemingly hard part really is. With these simple instructions, anyone can do a real professional appearing job without previous experience. One minute is all the time required to paint an animal. Some even less, a few a little bit more. Think of

WARDIE - JAY



all the things you will see in this booklet that are now ready for your circus. And that's not all. Many more interesting and curious items are planned for you which will be released in the future.

Think of having a small display only about 4 feet long on which you have spaced a few dozen wagons, a main tent, spectators, side show and banner line, with a track or two of cars along side which will give a view seldom seen by anyone. Then picture in your mind if you can, walking around to the other side of the table and viewing the main show from the inside. This is easily accomplished by rolling up the side and roof of the tents. Inside you see the rows of seats with the spectators on them, attendants walking and working throughout the center, the rings between the center poles, the tightrope walkers apparatus, the trapeze apparatus, the bareback riders performing their act in one ring while a performing horse act is going on in another, the ring masters, the clowns, the balking mule with his humorous clown trying to pull him off his stubborn perch. All these and many others are yours now. Read further and you will see all the things now ready. Then make up YOUR mind to START YOUR WARDIE-JAY CIRCUS TODAY.

Some of you may say even now, that it will be a long time before I can have all this. Well, friend it really does not take so long after all. One thing one week, another thing the next and progressing along at this rate will have what you want in hardly any time at all. Besides think of how many nice display pieces you will have before you start your circus tent layouts, for displays in your knick-knack

WARDIE - JAY

shelf or den. And men and boys are not the only people who are building this circus. A good many women have done wonders with our CIRCUS KITS AND ANIMALS. So your sex makes no difference. The main thing is your desire to do it. To build either one or more wagons, paint one or more animals which you can display proudly around the house, or start seriously on a complete miniature circus.

INSTRUCTIONS FOR PAINTING CIRCUS WAGONS AND ANIMALS

Among the things many people fear to try are the seemingly hard things! When one looks at a brightly painted WARDIE-JAY elephant, camel, giraffe etc., or a brilliant red circus wagon, finely striped with yellow fancy decorations which appear to be only the work of an artist, immediately you think, "Oh, I can't do that!" Or, "I haven't the patience to do it!" These subconsciously flash across your mind ONLY BECAUSE YOU DO NOT KNOW WHAT TO DO, OR HOW TO DO IT. For that reason this little article has been prepared to show how easily anyone can accomplish results which one would never think he or she could do. YOU can have the same kind of workmanship as the finished models or animals you see in a store window or display case, or that you perhaps have seen on your neighbors Shadow Box Shelf or Knick Knack Corner.

We suggest in painting all WARDIE-JAY CIRCUS items that you use model airplane dopes which come in practically all colors. These dry within two minutes and can be handled almost immediately. The colors to use on the various pieces are suggested below.

In addition to colors, you will need the following. A 2 ounce bottle of lacquer thinner which you may purchase in nearly any store where models are sold. Two artists brushes, one about $\frac{1}{8}$ " in diameter and another about $\frac{1}{32}$ " diameter. Should you not be able to find one as small as this, use one $\frac{1}{8}$ " and cut all the hairs but about 6 or 8 out of the brush. This makes striping as easy as falling off a log. Another indispensable item is a piece of waste rag. And one of the most important things to remember when working with lacquers is to dip your brush in the thinner and wipe off color as soon as you are ready to change to another color. Dip it one or two times, wiping each time and you will see a nice clean brush from your efforts. Also close the bottle as soon as you are through with a color. The colors you will need are mentioned with each piece from now on. With those colors and the brushes, thinner and rag you are now ready to do a nice professional looking job of coloring any WARDIE-JAY CIRCUS item.

WARDIE - JAY

PARADE ELEPHANT — Colors needed. Battleship Gray, Light Red, Light Yellow. First with the large brush paint all the skin of the animal gray up to and slightly overlapping the blanket and headcloth. In painting this and any other animal or item paint either the top or the bottom and set it aside while you do another for a minute or two. You will be able to go back over it and paint the other half. Now after dipping your brush in thinner and wiping clean once or twice — and closing your bottle of gray, using same brush go over the blanket and headcloth with light red. This will be easy as these are raised slightly above skin and you will not overlap on the skin. Should you do so by mistake at any time; you may touch the mistake with gray after the red has dried, very easily. Now is where the secret of fine striping comes in. The SMALL 1/32" BRUSH is used. Put it in the color and get most of the lacquer from the brush by dragging it over the top edge of the bottle and you will find that you can now place a small yellow line or dot around the edge of the blanket. You may make a series of dots or fine lines. Do the same on the edge of the headcloth. Again, should you make dots or line too large for your taste you may when dry make them smaller with red. If you are not satisfied at all, simply dip a rag in thinner and you will see that you can easily remove all lacquer from the animal and **START OVER**. Only by trying it yourself will you see how you can make a very skillful looking piece, which you little thought you could do.

CAMEL — Colors needed. Dark Brown, Light Red, Light Yellow. That is the way we finish our samples for display. Some of you may want a lighter color for the skin of the camel, but we suggest the dark brown as we use it here. Follow the instructions given for the elephant using the large brush for the skin, overlapping the blanket. Then red for the blanket — later cleaning the brown from the brush once or twice. Then with the smaller brush go around the edge of the blanket with yellow. Also you will see raised halter ropes and collar, which you will easily touch with yellow. Here is another suggestion not mentioned before. When doing this fine striping, rest the animal on the table and rest the little finger of the brush hand on the table. This will tend to keep your hand steady — and with a little practice — and this small size brush you will soon find that you can even spot in as small a dot as would be needed for eyes etc, although we see no necessity of doing it.

GIRAFFE — Colors needed. Here you will find a few manufacturers who have a color similar to a camels hair coat. That is the color for the skin of the giraffe. If you can not find it, darken a little white

WARDIE - JAY

with a drop at a time of dark yellow and you will soon have the color you wish. Also dark Brown. Paint the skin of the giraffe this Tawny (we shall call it) color. When dry, with small brush go over it with small dots of dark brown. It makes no difference whether one is larger or smaller, or regular dots or irregular dots. Follow the illustration you will find in this book and you will see how easy it is.

PERFORMING ELEPHANTS — Colors needed. Battleship Gray, Light Red, Light Yellow. This one is easy. Skin gray. Pedestal red. Dot edges of pedestal yellow or use the design in illustration or one of your own imagination.

LION — Tawny. Read instructions under giraffe. The lion is the easiest of all. Just the one color and you are finished. Of course if you would like to make a mouth, use a very fine stripe of red just where the mouth should be.

TIGER — Tawny. See above. Black. Tawny over entire body. Now with small brush stripe as illustration shows.

HORSES — We suggest White horses. You may wish black horses or even brown and white horses. You can do wonders with a little imagination. However if you use white, make the harness (raised) black with small brush. Now if you are going to place two men on the wagon seat, (one a driver and one a helper - most circus wagons have a driver and a helper) you want the plumes, tassels and bumps on tops of collars of horses the same color as the drivers uniforms. If you use dark blue for the drivers uniforms, paint these parts of the horses dark blue also.

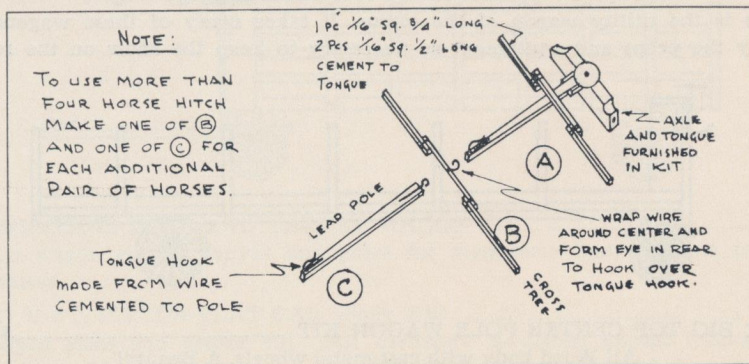
WAGONS — For the Cage Wagon, Baggage Wagon, Pole Wagon and Water Tank Wagons, the body is usually painted red. The under frame, axles etc., white or yellow, wagon tongue white or yellow, all hardware parts black. The Cage Wagon especially is a thing of beauty when the small ornamental raised portions are lightly touched with yellow color - just the suggestion is all that is needed to make a surprising effect in appearance.

HITCHING HORSES TO WAGON IN PAIRS — Using small 1/16" round wood dowels obtainable in many hobby shops, cut one piece 3/4" long and two pieces 1/2" long. Fasten them together as sketch shows with a few winds of thread. Then cement and allow to dry. With



WARDIE - JAY

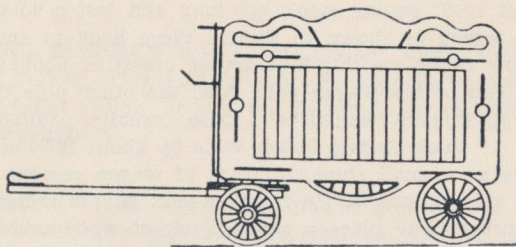
small wire of soft iron or copper make a hookeye in the end of the wire and wrap the rest of it around the middle of this double crosstree you just made. Paint entire double crosstree yellow and with small brush paint hook and thread with fine stripe of black. Make Lead pole about $1\frac{3}{4}$ " long of $1/16 \times 3/32$ stock or use another tongue. Bend wire to make hook as shown in sketch and cement. Make Hookeye and fasten in same manner to other end of pole. Now cut two pieces of $1/16$ " square stock $\frac{3}{8}$ " long and fasten to crosstree of wagon with thread as shown in sketch. Place hook at end of wagon pole. You now can place this first double crosstree hookeye over the hook at the end of the wagon pole. Also the other pole that has the hookeye in it. Cement wagon to a base (usually painted battleship gray) about $\frac{1}{4}$ " thick by two inches wide by about 10" long. Sand the edges a little at a small slope. In front of wagon cement two horses one on each side of tongue. In front of next double crosstree cement two more horses. Now place a small block of wood under the front crosstree so it is about $\frac{1}{4}$ " high (off base) and touch a drop of cement to edge of single crosstree. Touch end of a piece of black thread here. After a few minutes it will be dry. Then touch a drop to horses collar and draw up tight from end of crosstree to collar. Hold a second or two till it sticks and when dry cut close to collar with scissors. This is a trace. Do same on outside of all four horses. When dry you may remove block from under front double crosstree and you will find that the traces hold it up in place. For more than two teams, simply add more double crosstrees and poles with hookeyes on one end and hooks on the other. Some even have as many as ten horses - five teams. We have not given you instructions on reins here, but when you are that far you can hook them up with thread to suit yourself, remembering that all right reins of a horse are joined together and all left reins are joined together which you can do with cement. Circus teams usually have a different set of reins from each team instead of two lines running from each team all joined to the two lines as they go back.



WARDIE - JAY

WARDIE-JAY HO SCALE CIRCUS WAGONS

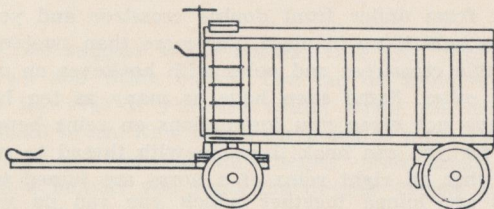
Wagon kits are complete in every respect, cast metal wheels, movable front axle undergear. Cage, Calliope kits have beautiful cast metal sides showing all the fancy scroll work seen on the larger wagons. Exploded view plans making assembly a very easy task indeed—about one hour's time needed per wagon.



THE CAGE WAGON KIT\$1.25

Beautiful Cast Metal Sides. Tiny Steel Bars.

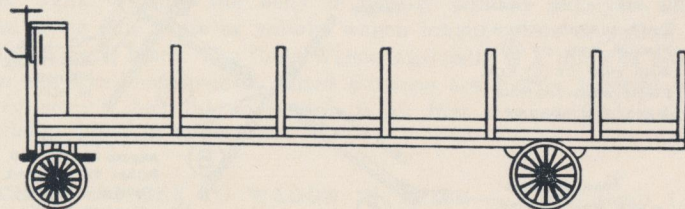
A wagon to charm children of all ages. Carries the wild animals of the jungle.



THE BAGGAGE WAGON KIT\$1.00

A Superb reproduction of a real Circus Baggage Wagon.

This is the utility wagon of the circus. It takes many of these wagons to carry the props and equipment so necessary to keep the show on the road.

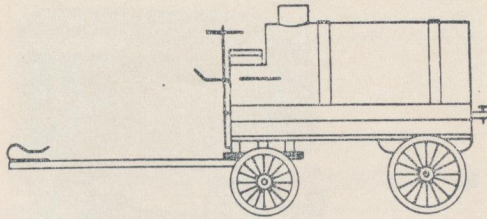


THE BIG TOP CENTER POLE WAGON KIT\$1.25

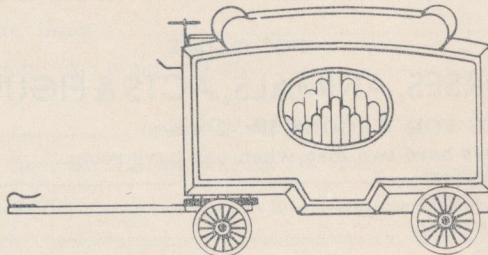
All Wood body with cast metal wheels. A Beauty!

A wagon made specially to carry the five long center poles of the Big Top.

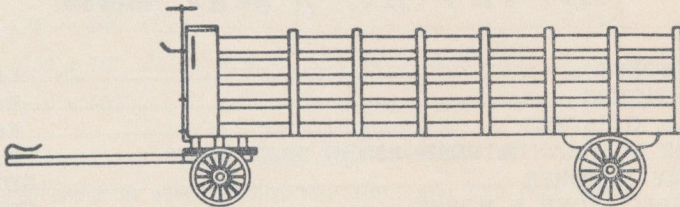
WARDIE - JAY



THE WATER TANK WAGON KIT\$1.25
 A Must with any Circus, to keep the dust from flying!



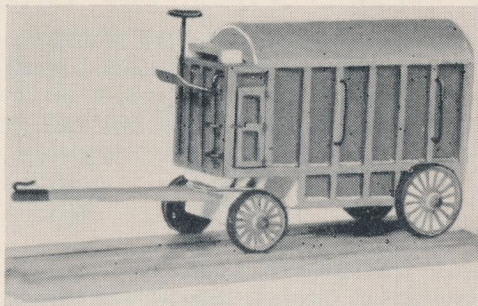
THE TWO JESTERS CALLIOPE WAGON KIT\$1.35
 Intricate carvings duplicated in the cast metal sides and a miniature calliope inside the wagon which may be seen through the oval openings in sides. This is the noise of the circus parade. Fine reproduction of the old steam calliope.



MENAGERIE POLE AND CANVAS WAGON\$1.25
 This wagon carries canvas and poles for menagerie tent. A must for all circuses.

HO 72-FT. CIRCUS FLAT CAR (Body Kit) \$1.00
 Shaped sides and center sill. All hardware furnished except trucks and couplers. If you have an operating HO railway you will need these special 72-ft. cars to load your circus wagons.





GIRAFFE WAGON\$1.25
 This wagon necessary to carry the valuable Giraffe for your show.

"HO" GAUGE HORSES, ANIMALS, ACTS & FIGURES

DRAFT HORSES FOR WAGONS (Pr. 2 poses)Pr. \$.50
 DRIVERS (always have two men when you have room,
 one as a helper)Ea. .15
 CLOWNS, WALKINGEa. .15
 CLOWNS, STANDINGEa. .15
 RING MASTERSEa. .15



RING HORSEEa. .25
 LIONS, TIGERSEa. .15
 CAMELS, GIRAFFESEa. .40
 PARADE ELEPHANTS, PERFORMING ELEPHANTSEa. .50
 COWBOY & HORSESET .40
 GIRL SPEC RIDER & HORSESET .40
 PERFORMING HORSES ACT, 2 performing horses, one down on
 one knee with girl rider and other with foreleg on pedestal and
 girl trainerSET .90
 BAREBACK RIDER & HORSESET .35
 BALKING MULE ACT with comic Clown trying to pull MuleSET .40
 TIGHTROPE ACT (2 tightrope girls, and plan for easily building a
 tightrope appartusSET .35
 TRAPEZE ACT (3 trapeze girls, one hanging by arms, another hanging
 by knees and the third in sitting position.....SET .50

HO GAUGE ACCESSORIES

HARDWARE PARTS

HO- 1 Calliope sides, cast metal	pr.	\$.35
HO- 2 Calliope pipes, cast metal	set of 4	.35
HO- 3 Cage wagon sides, cast metal	pr.	.25
HO- 4 Grab irons and foot rungs	doz.	.05
HO- 5 Fifth wheels	doz.	.30
HO- 6 Wheel axle pins, brass	doz.	.05
HO- 7 Brake wheel, cast metal	ea.	.05
HO- 8 Footboards, brass	ea.	.10
HO- 9 Wire, 4" long (for brake rod etc.)	ea.	.01

WOOD PARTS

HO-20 Standard floor section for wagons (18" long)	ea.	.15
HO-21 Wagon tongues	ea.	.05
HO-22 Front axle	ea.	.10
HO-23 Rear axle	ea.	.10

STRIP WOOD STRAIGHT AND CLEAR GRAINED

1/16 x 1/16 x 18"	ea.	.03
1/16 x 3/32 x 18"	ea.	.03
1/32 x 1/16 x 18"	ea.	.04
1/32 x 1/4 x 18"	ea.	.04
1/32 x 5/32 x 18"	ea.	.04
1/32 x 3/16 x 18"	ea.	.04

NEW CAST METAL WHEELS

These come in sets of four, two front and two rear wheels. They are authentic reproductions, insofar as possible in this small size, of real circus wagon wheels. Both front and rear wheels have 16 spokes and the hub is partially pierced so that drilling the axle hole is a simple operation.

Set of 4 wheels	25c
-----------------------	-----

DECALS

1/8" White Alphabet	ea.	.10
---------------------------	-----	-----



WARDIE - JAY

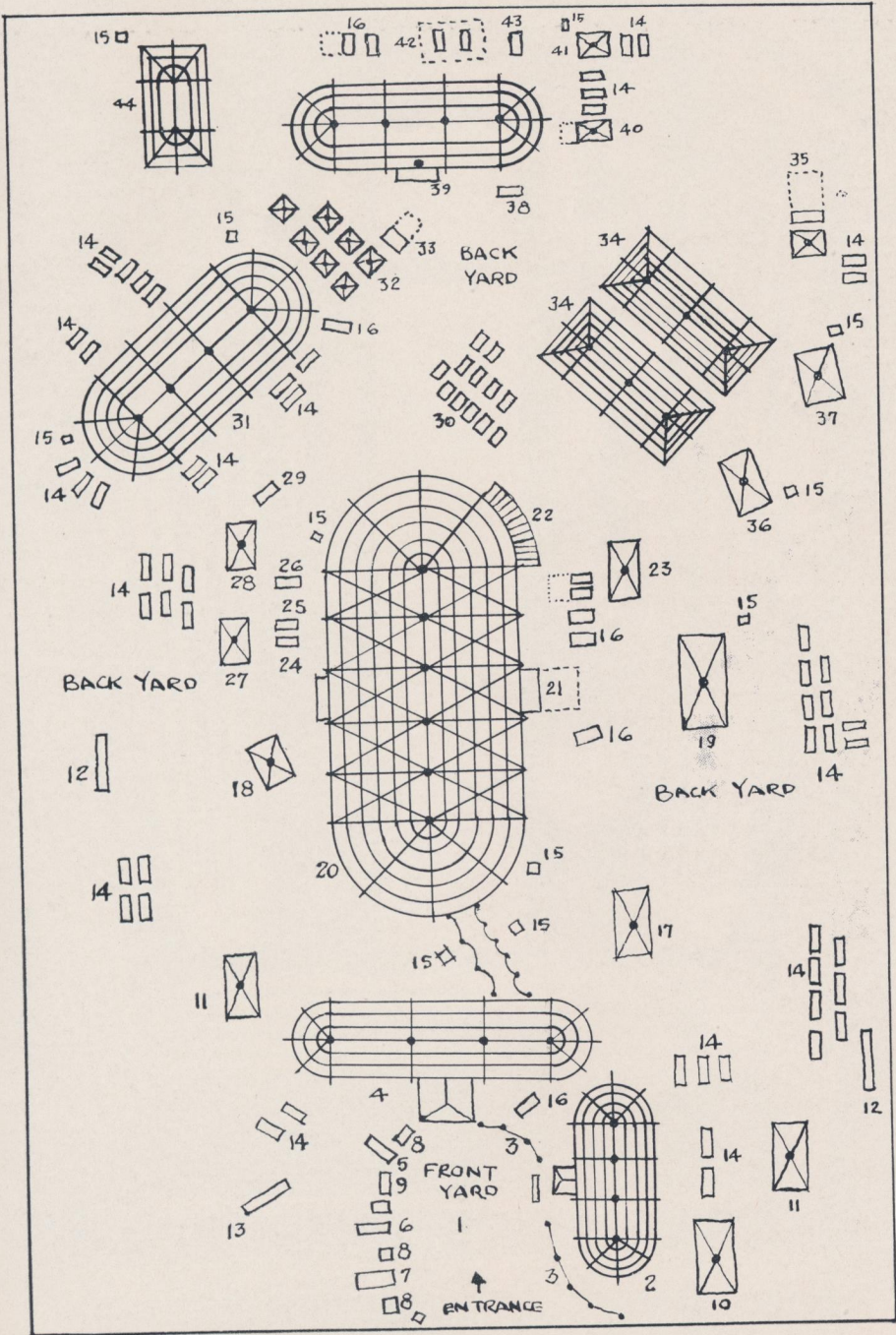
KEY FOR CIRCUS LAY-OUT LOT PLAN

This plan for a circus lot requires approximately eighteen acres of land and therefore cannot always be utilized in actual practice because of space limitations. However we show this plan merely as a suggested layout for a large circus. From this plan you can get some idea of the relationship of the various parts of the circus and how they are utilized to literally produce a city of tents. Whether you want to build a large circus or a small show this plan will be a helpful guide in your selecting the right amount and the right kind of equipment.

1. The "front yard" of the circus consists of the midway, side show, menagerie and the main tent.
2. Side show tent - takes about five wagons.
3. Side show banner line.
4. Menagerie tent - inside are 17 wild animal cages and over 40 elephants.
5. Red ticket wagon.
6. White ticket wagon.
7. Yellow ticket wagon.
8. Grab joint - booth selling food or souvenirs or both.
9. Juice joint (soda water stand).
10. Side show dressing tent.
11. Animal men's rest tent.
12. Pole wagon.
13. Silver office wagon.
14. Red circus wagons, canvas wagons, stake wagons, property wagons, etc.
15. Donnicker (chemical toilet).
16. Generator wagons.
17. Big top laborer's rest tent.
18. Band top - band has approximately 28 men.
19. Colored laborer's rest tent.
20. Big top - needs 20 wagons for 12 tons of canvas, poles, seats, etc.
21. Back door.
22. Clown alley - narrow canvas leanto where clowns keep their props during performance.
23. Butcher's supply (man who sells anything but tickets).
24. Chimps.
25. Dogs.
26. Seals.
27. Spec. top.
28. Wardrobe top.
29. Grease joint.
30. Spec. floats.
31. Dressing top.
32. Performers' rest tents.
33. Doctor's tent.
34. Horse tent - in all, the circus carries 900 animals of all kinds.
35. Blacksmith and harness shop.
36. Mechanical department.
37. Grooms rest.
38. Commissary - part of the specialty department which in addition has the blacksmith, cobbler and harness maker.
39. Cookhouse - has a crew of 130, 14 wagons.
40. Cookhouse - superintendent's rest tent.
41. Crew rest.
42. Kitchen top over range wagons.
43. Refrigerator wagon.
44. Colored cookhouse.

To move this enormous city takes over 190 wagons, 18 trucks, 14 tractors, all this on four train sections (48 flat cars, 11 stock cars, 26 coaches for workers and performers). Circus carries about 1400 employees and big top can handle approximately 10,000 spectators for one performance.

A "STRAIGHTAWAY" LAYOUT CIRCUS LOT PLAN



box may be purchased from your local toy or music store

Hardware, black

Black

DOOR HANDLE
BODY
STAGES

DETAIL OF
BOX AS

Strips of gold
Draw black
Black scribb
Gold paper

WARDIE-J

TOOL BOX $\frac{3}{8} \times 1 \times 3 \frac{1}{8}$
ELEVATION
HIP RING

WARDIE - JAY MENAGERIE POLE & CANVAS WAGON KIT

Fasten fastener to
four steps handrail, use
rail side chains. Chains
may be fastened to
pole.

4
PIECES
 $\frac{1}{8}$
LONG

4
PIECES
 $\frac{1}{8}$
LONG

4
PIECES
 $\frac{1}{8}$
LONG

4
PIECES
 $\frac{1}{8}$
LONG

4
PIECES
 $\frac{1}{8}$
LONG

4
PIECES
 $\frac{1}{8}$
LONG

4
PIECES
 $\frac{1}{8}$
LONG