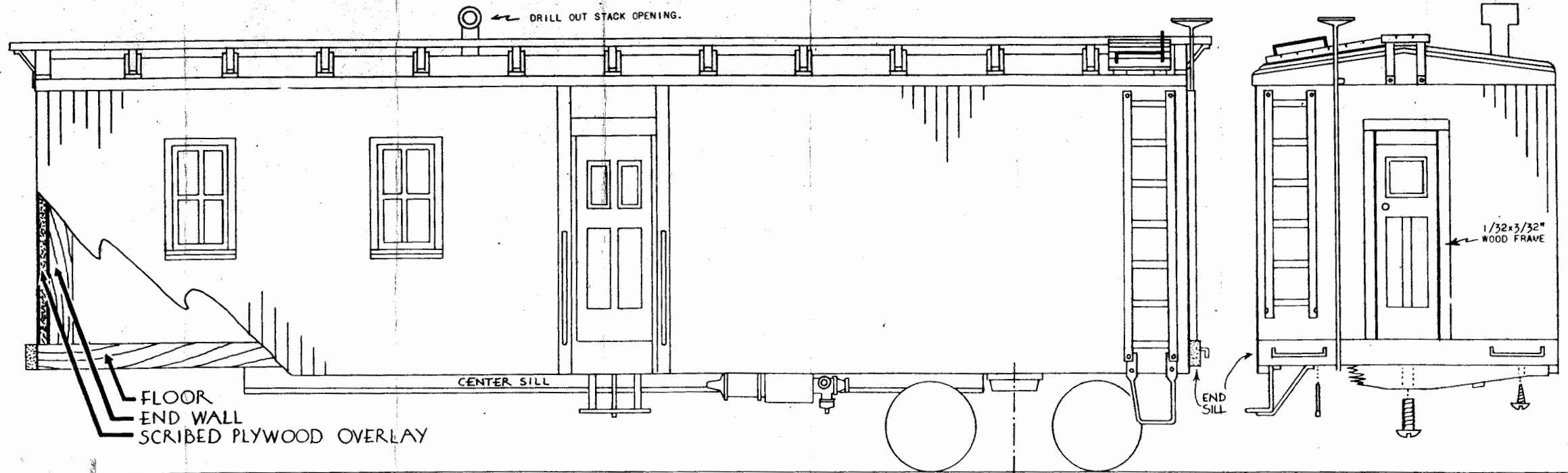


Our S gauge Work Cars are the exact duplicate of the O gauge series, the plans therefore are the same except for a few dimensional variations.

The reference to 3/32 x 1/16 x 1/32 material for door frame is now 1/16 x 1/32.

In paragraph 6 the spacing for the roof ribs is 9/16" instead of 3/4". To improve our product we have provided a stamped roof rib to replace the wood.

BOB PEARCE ENGINEERING CORP.



ASSEMBLY SUGGESTIONS

ASSEMBLY METHODS FOR ALL CAMP CARS IN THIS (#400) SERIES ARE THE SAME. ONLY VARIATION IS THE WINDOW ARRANGEMENT ON THE SIDES OF EACH CAR.

EXAMINE THE PARTS OF THIS KIT TO LEARN THE IDENTITY OF EACH COMPONENT AND ITS POSITION ON THE MODEL. THIS WILL MAKE METHOD OF CONSTRUCTION MORE COMPREHENSIVE AND ENJOYABLE.

BEGIN CONSTRUCTION BY FITTING THE SCRIBED WOOD END OVERLAYS AND CAST DOORS OVER THE HEAVY END WALLS. WITH A SHARP KNIFE CUT BALANCE OF WAY THRU DIE CUT DOOR OPENING, FILE SMOOTH AND FIT DOOR. CEMENT OVERLAY AND DOORS TO HOLD. END OVERLAY AND END WALL EDGES MUST BE FLUSH BEFORE FASTENING ONTO CAR FLOOR. NOTE ON PLAN THAT ENDS REST ON FLOOR, NOT AGAINST IT. FOLLOW BY FASTENING THE ROOF TO ENDS, OBTAINING A SQUARE BODY FIT. USE BOTH BRADS AND CEMENT FOR THIS PURPOSE.

LIGHTLY SAND THE CAR SIDES PARALLEL WITH SCRIBING. FILE ANY PROTRUSIONS FROM WINDOW CASTINGS THEN FIT INTO PRE-CUT OPENINGS. DO NOT FORCE AS SUCH MAY CAUSE DISTORTION OF EITHER THE SIDE OR WINDOW FRAME CASTING. IF NECESSARY, FILE AWAY WINDOW OPENING BY CLAMPING LIGHTLY IN VISE, LEAVING THIN PORTION EXPOSED OUT OF VISE JAWS AND FILE THIS AWAY. CEMENT CAST WINDOWS IN PLACE, PAINT DESIRED COLOR BEFORE CEMENTING THE ACETATE "WINDOW PANES" ON INNER SIDE. PAINT ALSO THE CENTER AND END DOOR WINDOWS LIKEWISE.

FIT THE TWO (HALVED) SIDES TO CAR FLOOR AND ROOF WITH CENTER DOOR IN BETWEEN. IF CERTAIN A GOOD FIT IS PRESENT FASTEN WITH BOTH CEMENT AND BRADS. IF YOU DO NOT WISH TO HAVE BRAD HEADS EXPOSED ON FINISHED MODEL SNIP THESE OFF BEFORE USING. BOTH THE CENTER AND END DOORS ARE NOW FINISHED WITH NECESSARY TRIM WHICH IS CUT TO SIZE FROM 1/32x3/32" WOOD STRIP MATERIAL.

CUT 11 "ROOF RIBS" FROM THE SEAM CAP MATERIAL PROVIDED, TO WIDTH OF CAR ROOF. NOTCH IN CENTER TO CONFORM WITH CONTOUR OF CAR ROOF. CEMENT IN PLACE ON 3/4" CENTERS, OR SPACINGS. SEAM CAP AT EACH END IS MADE FROM 1/32x3/32" STRIP WOOD. CAREFULLY TRIM ROOF WALK TO SIZE AND FASTEN WITH CEMENT AND BRADS TO ROOF CENTER. INSTALL ROOF WALK BRACES BELOW EACH END. MAKE CORNER ROOF PLATFORM SUPPORTS FROM STRIP WOOD, CEMENT TO ROOF, THEN CEMENT SCRIBED WALKS ONTO THESE AS SHOWN ON PLAN. DRILL UNDERSIZED HOLES FOR THE CORNER ROOF HAND HOLDS THEN DRIVE INTO PLACE. A BRAD DRIVEN INTO EACH CORNER WILL GREATLY ADD TO FINISHED APPEARANCE. THIS COMPLETES ROOF DETAILS WITH EXCEPTION OF THE SMOKE STACK WHICH IS LASTLY INSTALLED (INTO PRE-DRILLED HOLE) TO PREVENT BREAKAGE DURING FURTHER CONSTRUCTION.

TURN CAR BOTTOM SIDE UP AND PROCEED WITH UNDERBODY DETAILS: TRUCK BOLSTERS, CENTER SILL, BRAKE CYLINDER AND CENTER DOOR STEPS, IN THAT ORDER. STEPS ARE INVERTED BRAKE STAFF PLATFORMS WITH TWO SMALL TABS CUT OFF. FASTEN AS SHOWN ON PLAN, SOLDER A SHORT LENGTH OF WIRE FOR RE-INFORCEMENT. COUPLERS OF YOUR OWN CHOICE MAY NOW BE INSTALLED. ATHEARN DRAFT GEAR RECOMMENDED.

COMPLETE MODEL WITH THE INSTALLATION OF END SILLS (1/16x3/16" WOOD), GRAB-IRONS, LADDERS AND CORNER STEPS AS ILLUSTRATED. SOLDER BRAKE WHEEL TO LENGTH OF WIRE AND INSTALL, BENDING LOWER END UNDERNEATH CAR AND FASTENING TO BRADS. TO HOLD AT TOP SOLDER BRAKE STAFF TO BRAD HEAD DRIVEN PART WAY INTO ROOF EDGE.

BE SURE MODEL IS DUST FREE BEFORE PAINTING. A LIST OF AUTHENTIC COLOR SCHEMES USED BY LEADING RAILROADS IS PRINTED IN OUR CATALOG. AFTER FINAL COAT OF PAINT IS APPLIED LETTER WITH DECALS TO SUIT. SHOULD DECALS TEND TO IMPROPERLY ADHERE TO THE SCRIBED EXTERIOR SURFACE OF THE MODEL WE SUGGEST THE USE OF EITHER "DECAL-SET" OR 410-M PAINT THINNER TO MAKE THEM PROPERLY STICK. APPLY SMALL DABS (WITH BRUSH) VERY SPARINGLY TO LOOSE EDGES OF DECAL FILM. LET THOROUGHLY DRY THEN APPLY A THINNED OUT COAT OF EITHER DULL OR SEMI-GLOSS VARNISH, WHICHEVER YOU PREFER.

TRAIN-CRAFT PRODUCTS

O GAUGE • 1/4" SCALE CAMP CAR KITS
#400 SERIES - PLAN #12