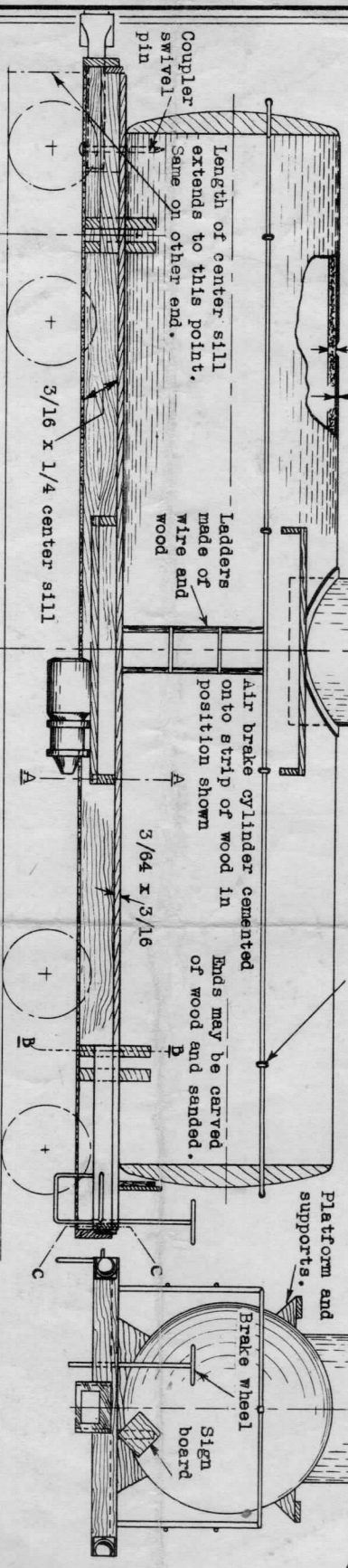
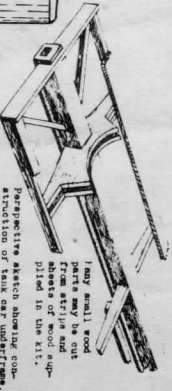


Dome details may be made of wood



For best results use C-D Balsa Cement

Wherever sheet balsa is recommended use cardboard

BUILDING A TANK CAR

The paper tube comprising the tank is fitted at each end with a wood plug shaped to fit by using a razor blade and sandpaper block. Shape and cement a similar plug to the top of the smaller tube which comprises the dome of the tank. Cut the excess paper away from the printed paper sheets and stick them to the tank and dome cylinders by painting the unpainted surfaces with paper cement and wrapping around the cylinders carefully. On the top side of the tank in the center, cut a hole carefully with a pointed razor blade and fit the dome cylinder into it cementing neatly in place.

The center sill is a strip of wood 3/16 x 1/4 with a cut out at each end to receive the coupler shanks. On the underside of the sill a thin strip of cardboard 3/8" wide may be cemented to imitate the flange of a steel beam. Cut formers A-A, B-B, C-C, from 1/16 thick flat wood carefully to shape. Cement these formers in proper positions onto the center sill. Cement the 3/64 x 3/16 running boards to top of A-A, etc. Cement the dome platform boards in place.

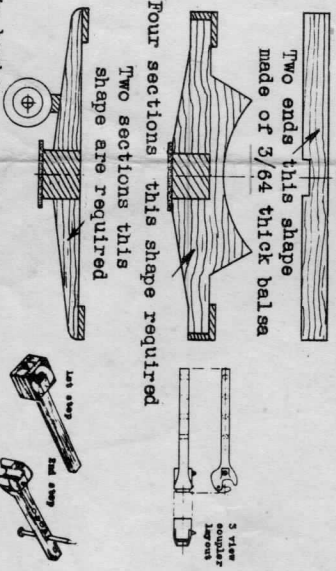
Make the striking plates at each end of the center sill by cutting from 1/16 wood and colored black or rust.

Add all details desired such as air brake cylinder, grab irons, pulling hooks, hand rails, brake wheel, etc.

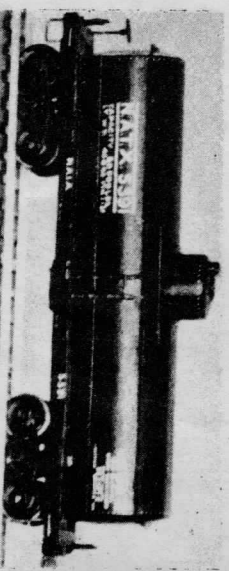
Before coloring the exposed wood surfaces such as tank ends, running boards, etc., paint sanding after each coat dries. Be very careful not to spread the paper cement onto the printed paper as it will make a glossy surface where spread. To paint use any good lacquer, enamel or specially prepared C-D Railroad Enamel. Dope colored to match the printed paper or as the model builder sees fit for certain types or preferences.

Attach the trucks and couplers with excutcheon pins.

If the builders desire to make the truck units of metal for a working model to add to their rolling stock they may do so but it is advisable to weight down the underside of the car with a strip of sheet lead for lower center of gravity.



Above photograph represents one of many types of cars that are made from these drawings.



Copyright By CLEVELAND MODEL & SUPPLY COMPANY INC. CLEVELAND, OHIO 10377
 DRAWINGS BY CLEVELAND MODEL & SUPPLY COMPANY INC. CLEVELAND, OHIO
 DRAWINGS WILL BE SEVERELY PENALIZED TO THE FULL EXTENT OF THE LAW
 USA
 A CLEVELAND-DESIGNED RAILROAD "REP" TYPE MODEL "RT"
 STANDARDIZED TANK CAR

All Distans Incorporated Experience Of This Concern As Model Engineers Since 1919