

***KINSMAN* SCALE MODELS**

MELROSE, MASS.

$$\frac{3}{16}'' = 1'-0''$$

PHOSPHATE HOPPER CAR

If finished kit is to be mounted on AF trucks use the 3/32" X 5/32" wood for end sills.

$\frac{1}{4}$ STAPLE

BOTTOM OF
SCRIBED SHEATHING
COMES DOWN TO
HERE)

TRIM
AWAY

FLOOR

SIDE

USE ONLY THE ABOVE

WOOD COLOR CODE
 X 3/32" Green
 X 3/64" Black
 X 1/16" Blue
 X 1/16" Red

KINSMAN SCALE MODELS

487 SWAINS POND AVE.

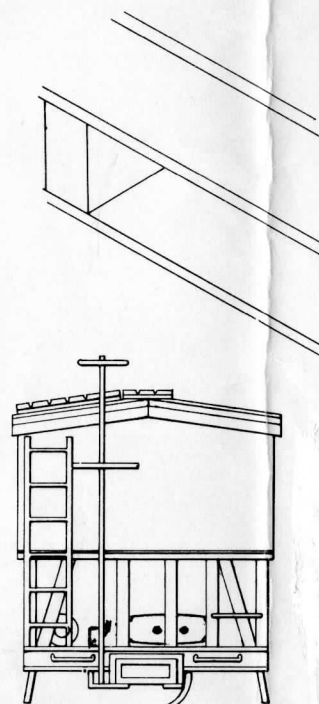
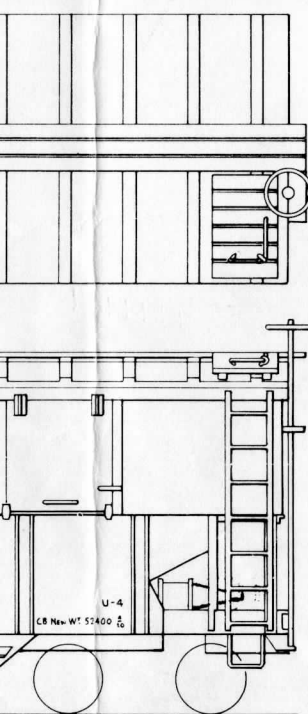
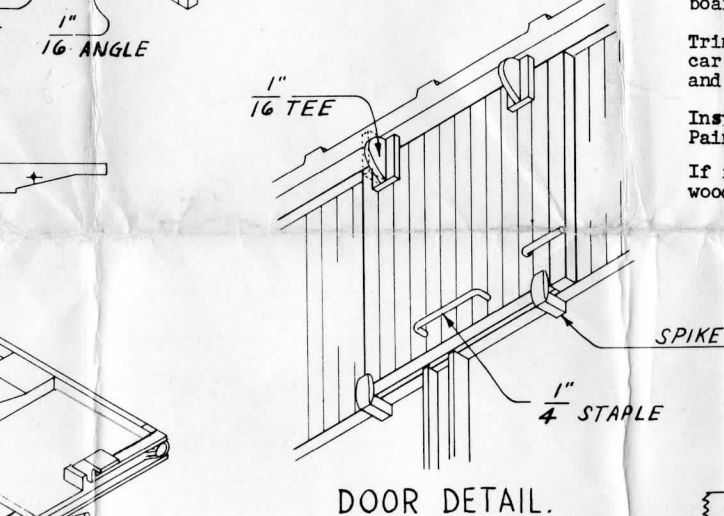
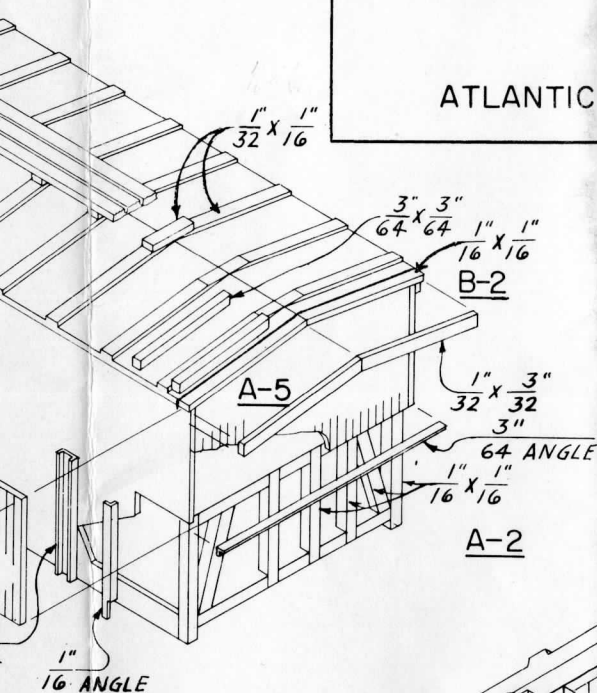
MELROSE, MASS.

"S" GAUGE

3/8" = 1'-0"

ATLANTIC COAST LINE

PHOSPHATE HOPPER CAR



Make two floor sections as per template.

Begin construction by making up the basic framework, (A-1). Drill 1/16" holes for brake system before cementing the parts together.

Install 1/16" sq. end bracing, (A-2).

Make two sides as per template, (A-3), sand to a smooth finish and cement 3/32" channels in place. Cement to the car body framework, (A-4).

Cement end sheathing in place, (A-5), followed by the side sheathing, (A-6). Note that the side sheathing overlaps the end sheathing. Make sure that the joints between the side sections come underneath the doors.

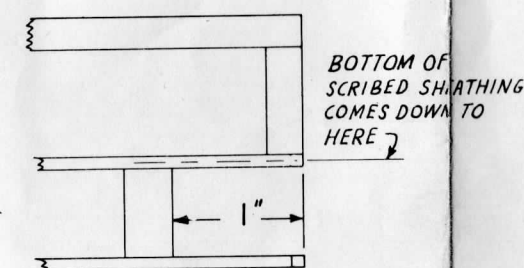
The side, end and door sheathing is accurately cut to the proper length (along the grain). Before cutting them to size, be sure to check with the drawing to avoid mixing them up.

Install roof ribs, (B-1) and roof walk supports. Install fascia boards, (B-2). Install doors and door stops, (B-3).

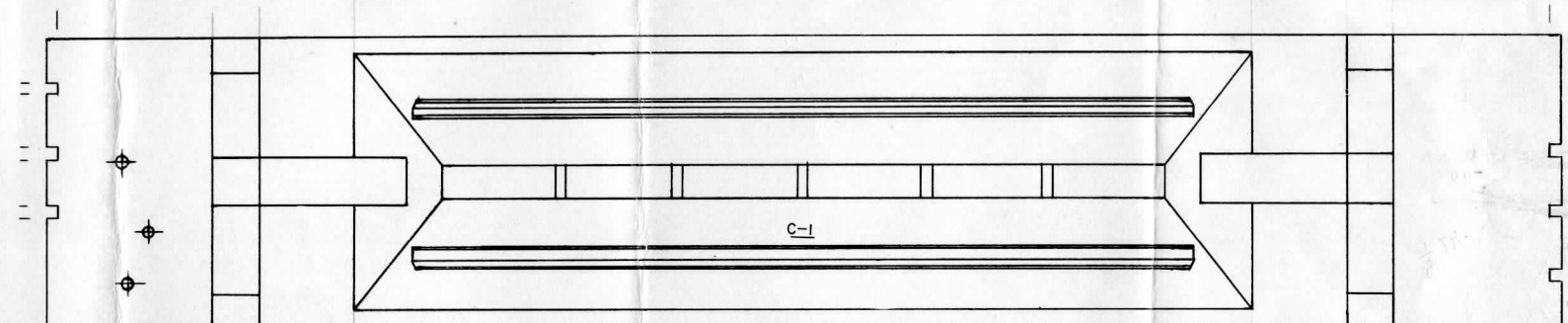
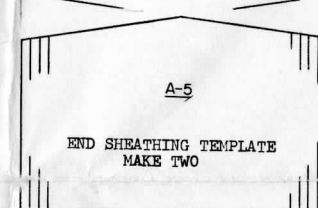
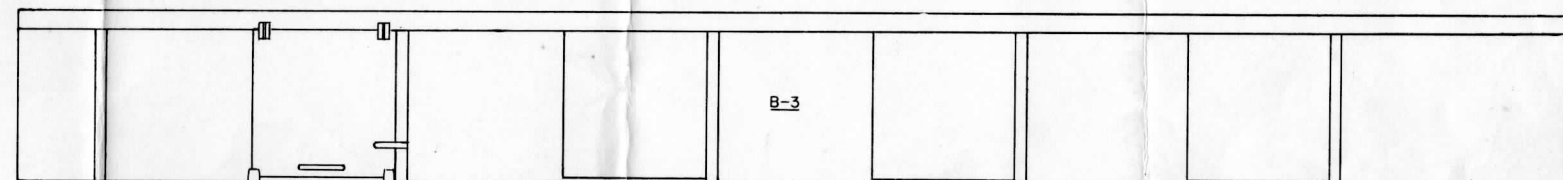
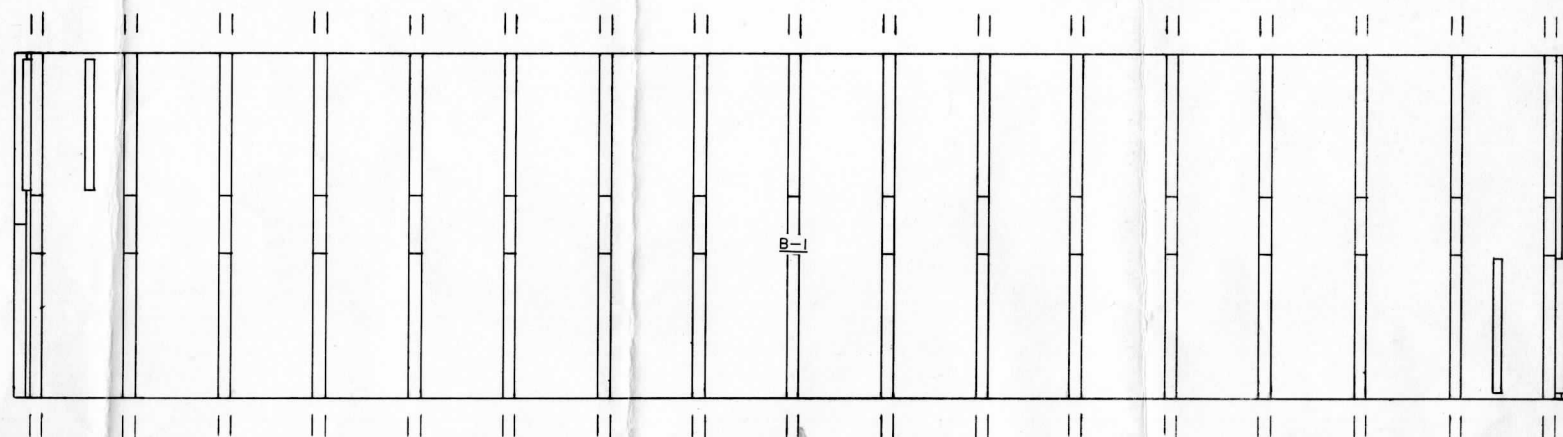
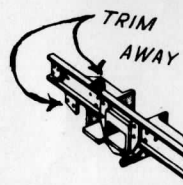
Trim ends of hopper bottoms, (C-1) to proper angle and cement to car bottom. Cement underbody parts in place. Drill center sills and bolsters for 1/32" wire before installing.

Install roof walks, hardware parts and miscellaneous trim parts. Paint the entire car box car red and apply decals.

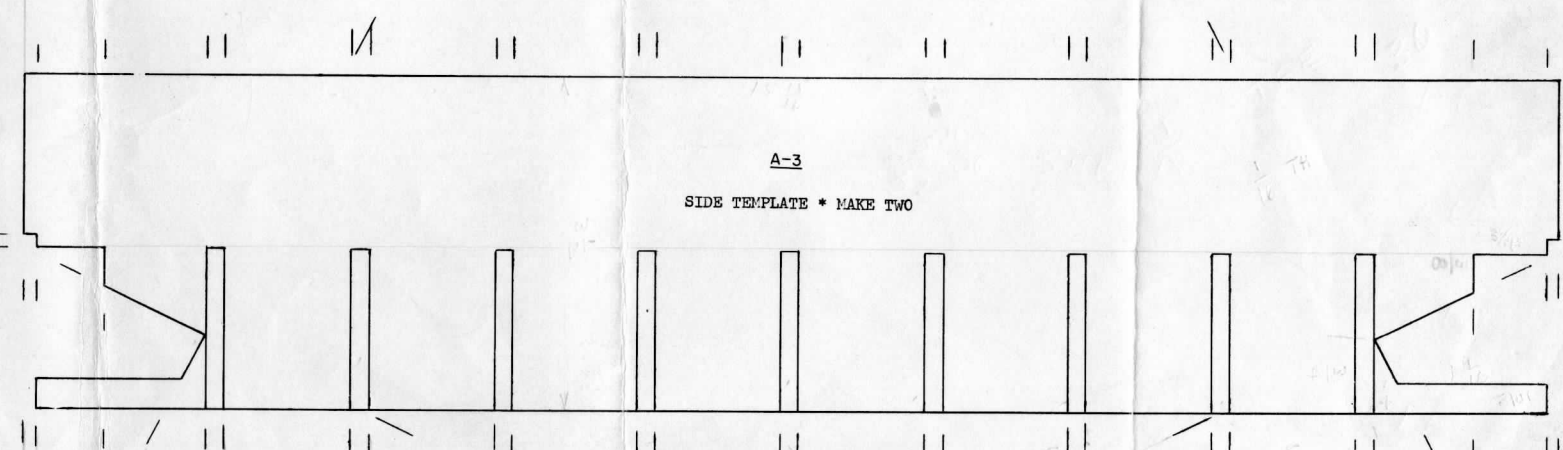
If finished kit is to be mounted on AF trucks use the 3/32" X 5/32" wood for end sills.



A-1



FLOOR TEMPLATE* MAKE TWO



A-3

SIDE TEMPLATE * MAKE TWO

USE ONLY THE ABOVE DRAWINGS FOR TAKING MEASUREMENTS