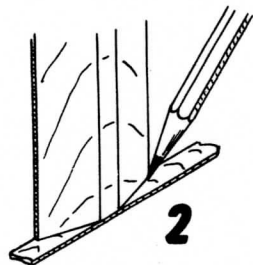


# MAIN LINE MODELS

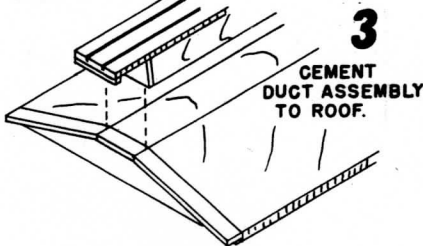
## REFRIGERATOR POULTRY CAR ASSEMBLY INSTRUCTIONS

**1** ROOFWALK SUPPORTS ARE CUT TO SHAPE. ON 1/32" MATERIAL CURVE CAN BE SANDED BEFORE MOUNTING BY WRAPPING SANDPAPER AROUND 1/4" DOWEL.

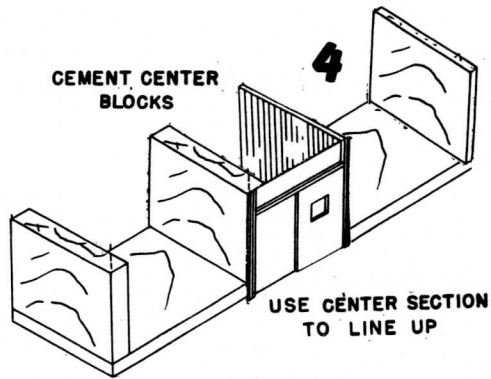


**2** MARK SHAPE OF ROOF END ON 1/32" MATERIAL WITH SHARP PENCIL. TWO SUCH PIECES WILL BE USED AS END FASCIA LATER.

3/32" BY 1/32" STRIP IS USED USED TO FORM END EAVES. BEND BY NOTCHING SLIGHTLY. CEMENT TO ROOF EDGE AND SAND FOR SMOOTH FIT.



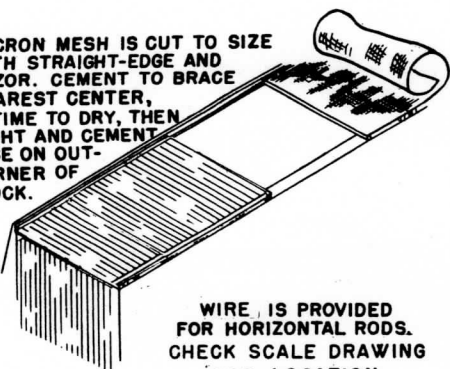
CEMENT CENTER BLOCKS



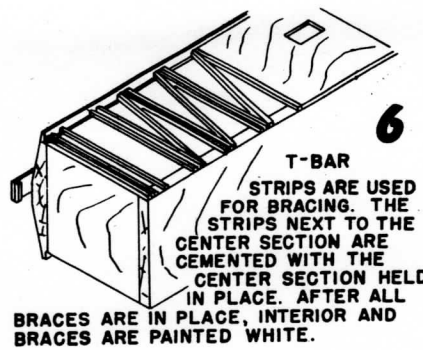
USE CENTER SECTION TO LINE UP

DACRON MESH IS CUT TO SIZE WITH STRAIGHT-EDGE AND RAZOR. CEMENT TO BRACE NEAREST CENTER, ALLOW TIME TO DRY, THEN PULL TIGHT AND CEMENT TO BRACE ON OUTSIDE CORNER OF END BLOCK.

**7**



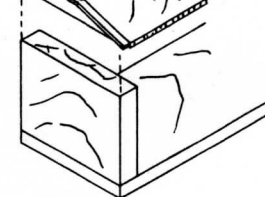
WIRE IS PROVIDED FOR HORIZONTAL RODS. CHECK SCALE DRAWING FOR LOCATION.



BRACES ARE IN PLACE, INTERIOR AND BRACES ARE PAINTED WHITE.

CEMENT END BLOCKS FLUSH WITH END OF FLOOR. CEMENT ROOF IN PLACE. ROOF IS CUT LONGER THAN FLOOR TO ALLOW FOR THICKNESS OF SCRIBED ENDS.

**5**



CEMENT ENDS IN PLACE. CEMENT CENTER SECTION IN POSITION. 3/32" BY 1/32" STRIPS ARE USED ON EITHER SIDE OF CENTER SECTION. FRAME SIDES WITH 3/32" STRIPS. THIS WILL HOLD MESH.

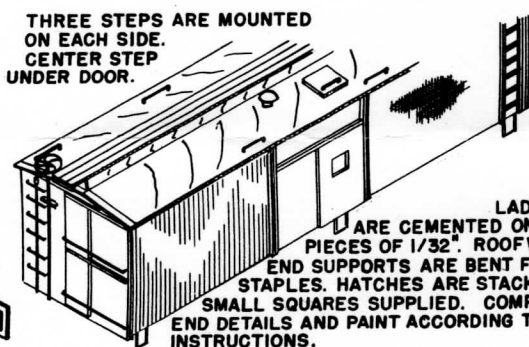
**8**



ADD END FASCIA FROM STEP 2. NOTCH OR DRILL END EAVE FOR BRAKE STAFF. ASSEMBLE END DOOR DETAIL AND LADDERS. CEMENT DOOR TO CENTER SECTION. ADD DOOR CLEATS AT BOTTOM. 1/32" BY 1/16" STRIP ABOVE, AND GRABIRON ON DOOR TO COMPLETE DETAIL.

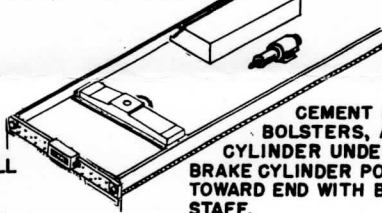
THREE STEPS ARE MOUNTED ON EACH SIDE. CENTER STEP GOES UNDER DOOR.

**10**



LADDERS ARE CEMENTED ON SMALL PIECES OF 1/32" ROOFWALK END SUPPORTS ARE BENT FROM STAPLES. HATCHES ARE STACKED ON SMALL SQUARES SUPPLIED. COMPLETE END DETAILS AND PAINT ACCORDING TO INSTRUCTIONS.

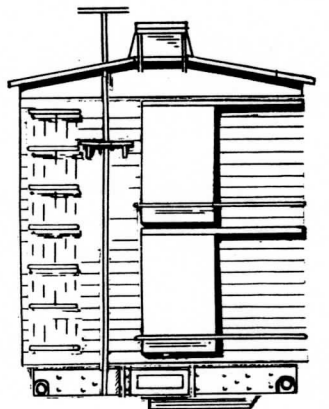
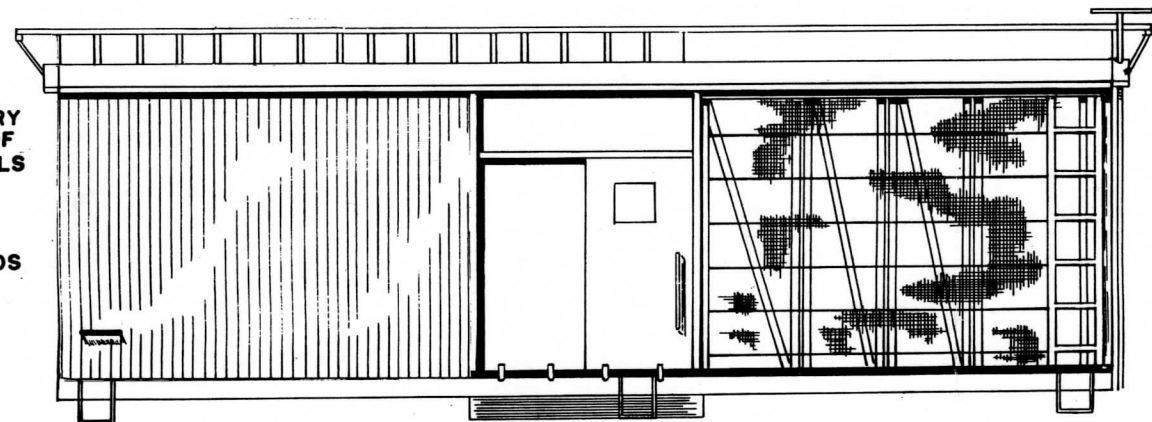
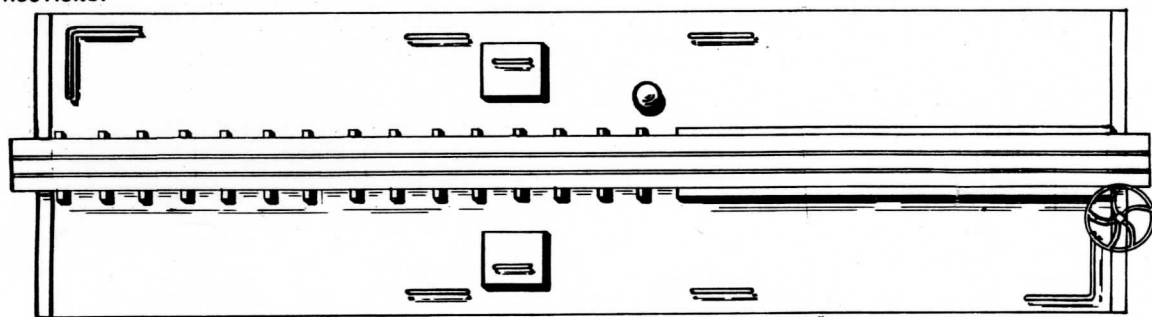
CEMENT LETTERBOARD TO BOTTOM FLUSH WITH EDGE OF FLOOR PIECE. CEMENT END SILLS



CEMENT FEED BIN, BOLSTERS, AND BRAKE CYLINDER UNDER CAR. BRAKE CYLINDER POINTS TOWARD END WITH BRAKE STAFF.

HATCH ASSEMBLY

BRAKE PLATFORM IS BUILT UP ANGLED PIECES ARE 1/32" AS ARE THE ROOF WALK END SUPPORTS

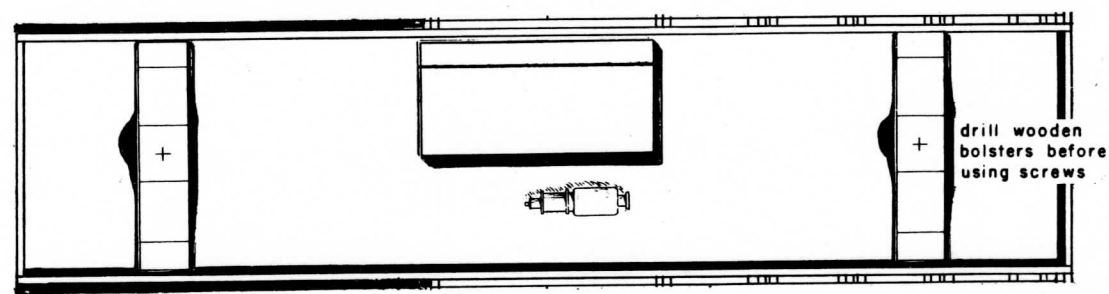


PC-1 STENTZ PALACE POULTRY COACH GREEN ENDS AND ROOF BLACK UNDERBODY AND DETAILS FRAMING STRIPS WHITE

PC-2 NATIONAL POULTRY BOX CAR RED ROOF AND ENDS BLACK UNDERBODY

PC-3 MUDD BLACK ROOF, BLACK ENDS, UNDERBODY

PC-4 LEGHORNS LPTX BOX CAR RED ROOF CABOOSE RED ENDS BLACK UNDERBODY



drill wooden bolsters before using screws

END DOORS ON POULTRY END ONLY