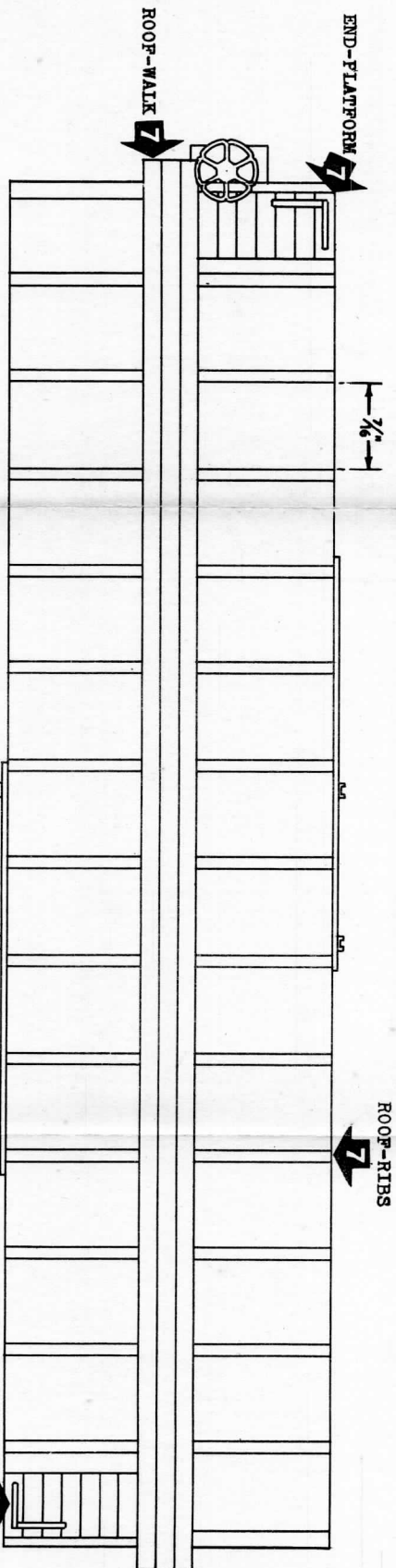


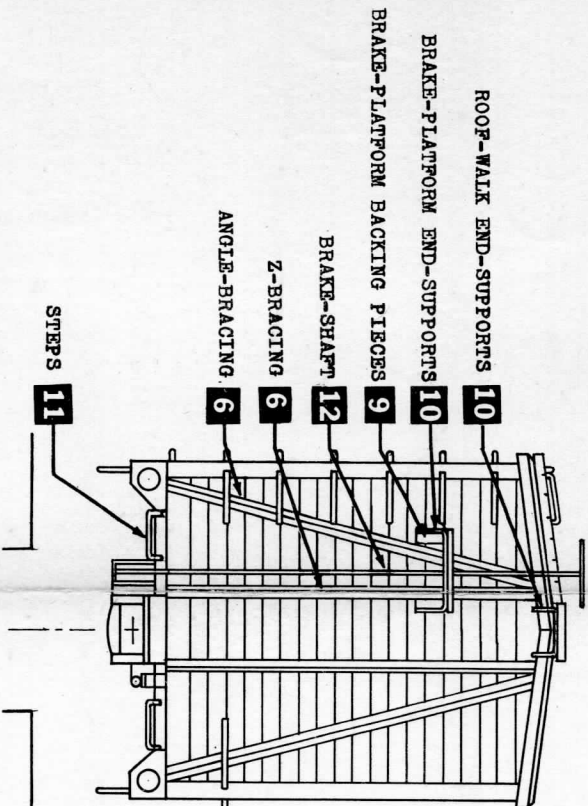
NOTE: See your dealer for CHAMPION DECALS

The two shown are only suggested.
A large assortment is available.
Paint entire car BOX CAR RED;
Flouquil paint recommended.

NOTE: BRAKE WHEEL and
BRAKE-PLATFORM
on one end only



TOP VIEW

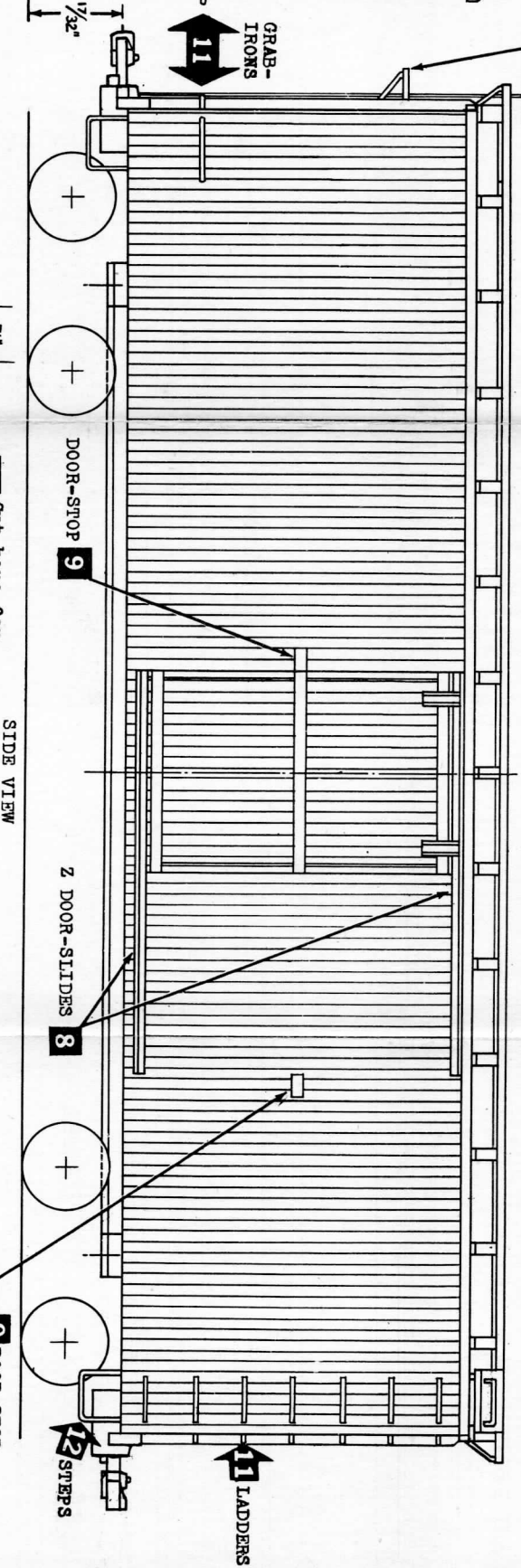


NOTE: FOR SCALE OPERATION, USE
NORTHEASTERN OR CULP
TRUCKS

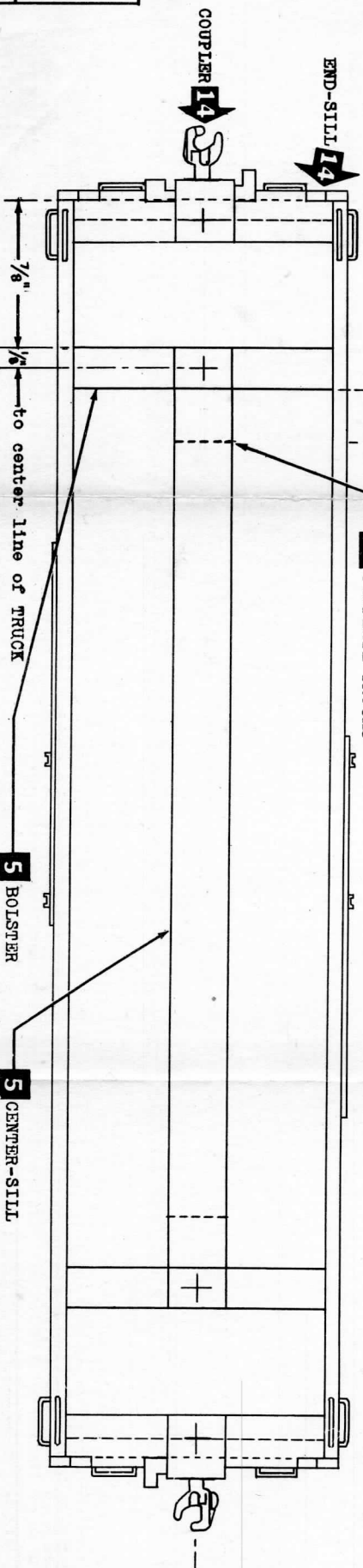
FOR TINPLATE, LEAVE OFF
END-STILL AND COUPLER
AND USE AMERICAN FLYER
TRUCKS

KEEP THE BOX TO STORE
YOUR CAR WHEN NOT IN USE.
THE BOX WAS DESIGNED FOR
THIS PURPOSE.

END VIEW



SIDE VIEW



BOTTOM VIEW

NIMCO S-GAUGE SB-10 WOODSHEATHED BOX CAR KIT

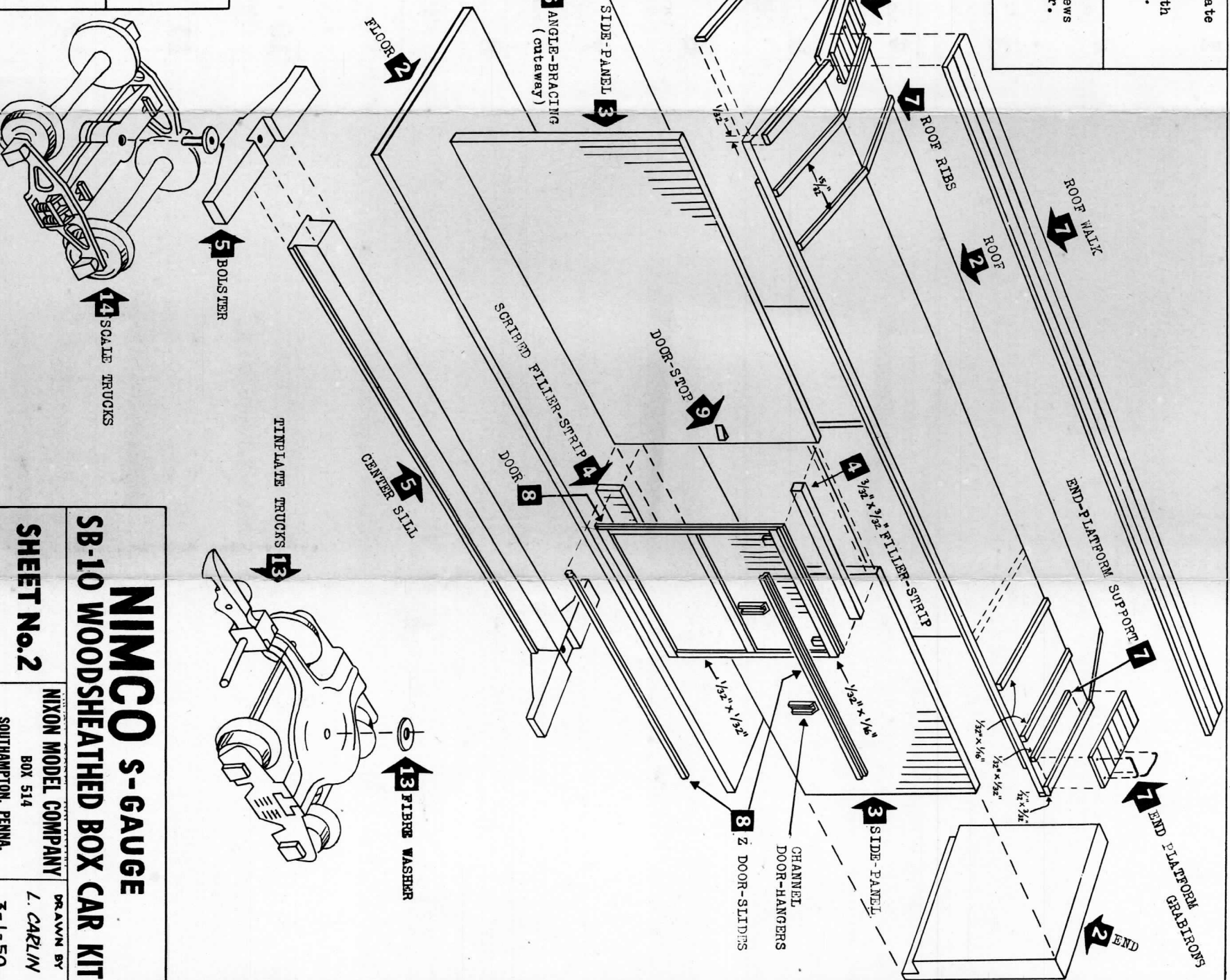
SHEET No.1

NIXON MODEL COMPANY
BOX 514
SOUTHAMPTON, PENNA.

DRAWN BY
L. CARLIN
S-1-50

- 1 Sand ends of wood parts lightly.
- 2 Assemble roof, floor and ends (We recommend the use of Ambroid cement). Make sure all parts are flush and square as assembly progresses.
- 3 Cement scribed side-panels in place. Be sure side-panels are flush with ends and tight against roof-eaves.
- 4 Cut scribed filler-strip to size of door opening and cement in place, even with bottom of side-panels. Use $3/32$ x $3/32$ " filler-strip at top of door opening.
- 5 Cement center-sill and bolsters on center line of car floor. Bolsters should be $7/8$ " from car end to outside edge of bolster. See Sheet #1.
- 6 Locate Angle and Z-bracing on car ends from dimensions given on Sheet #1.
- 7 Use actual dimensions from Sheet #1 for locating roof ribs, roof walk, end-platforms and platform supports, ladders, grabirons, etc.
- 8 Cement Z door slides to car body, making sure that door slides freely. Cement $1/32$ x $1/16$ " horizontal strips, and $1/32$ x $1/32$ " vertical strips to door.
- 9 Cut diagonal pieces for door stops and brake platform backing-pieces from $1/16$ x $1/16$ " stock. See Sheet #1 for location.
- 10 Cement staples in diagonal position for brake platform and roof walk end-supports
- 11 Drill #70 holes for grabirons and ladders. Cement grabirons and ladders in place. See Sheet #1
- 12 Drill #65 holes for steps, and through brake-platform for brake-shaft. Cement steps and brake-platform shaft in place. Cement brake-wheel on top of shaft.

- 13** FOR TIMPLATE USE: When using Timplat trucks, eliminate bolsters and cut 5/16" off each end of center sill. Attach Timplat trucks to floor with #4 roundhead wood-screws 3/4" long. Use fibre washers supplied in kit between trucks and floor.
- 14** FOR SCALE: Use CULP or NORTHEASTERN scale trucks; fasten same with screws supplied, through center of bolster. Use NORTHEASTERN #S-57 end sills; fasten same with #2 wood screws. Use automatic or dummy couplers.
- 15** Apply CHAMPION decal lettering sets (a variety available at your dealers) and paint car with Floquil paint in colors suggested with decals. See Sheet #1.
- 16** Give entire car one coat of dull varnish. (WALTERS dull varnish is suggested since this has an oil base and will not have a solvent action on the paint.)
-
- The diagram illustrates the assembly of a model train car chassis. It shows the car body, trucks, and various components like the center sill, end sills, and couplers. Arrows and labels indicate the specific steps for each component's installation or modification.



NIMCO S-GAUGE

SB-10 WOODSHEATHED BOX CAR KIT

NIXON MODEL COMPANY
BOX 514
SOUTHAMPTON, PENNA.

DRAWN BY
L. CARLIN
3-1-50