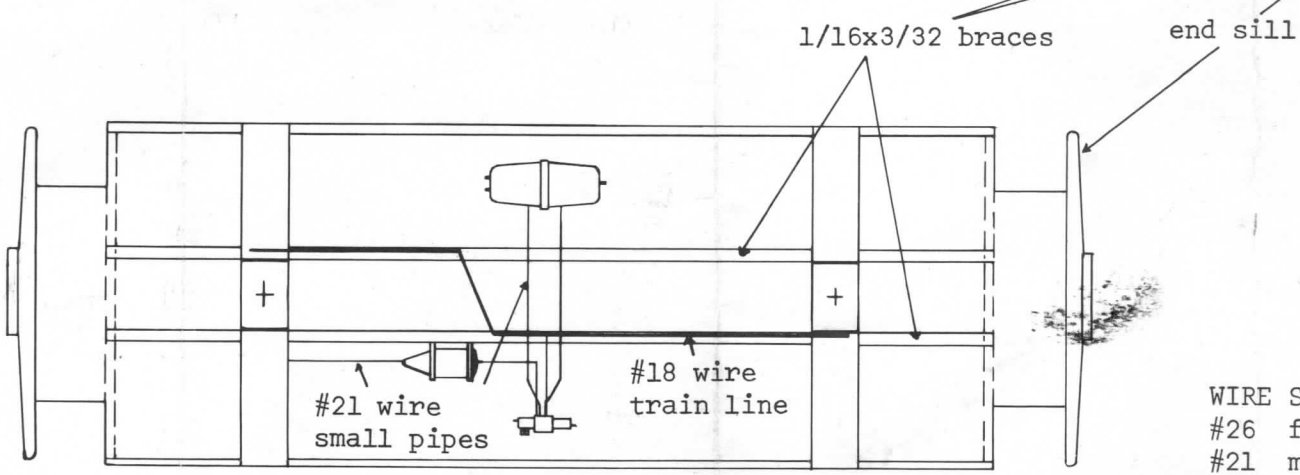
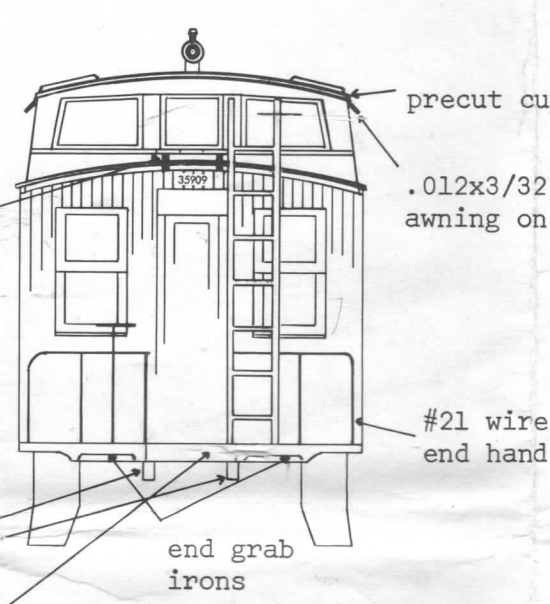
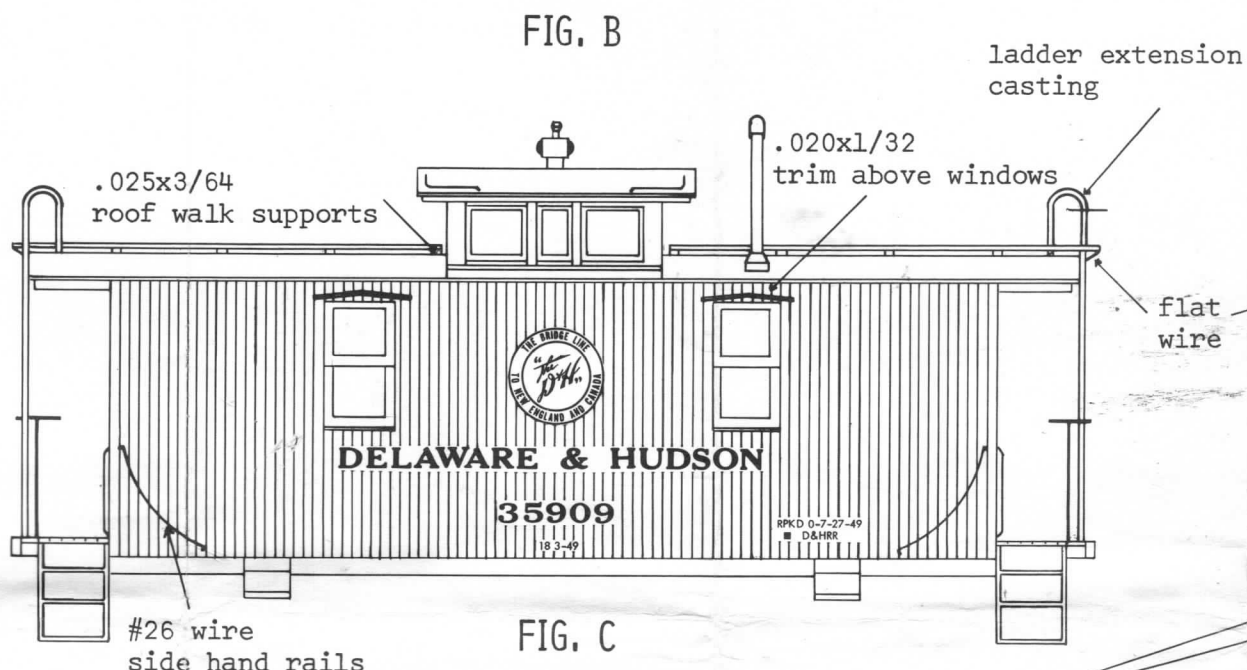
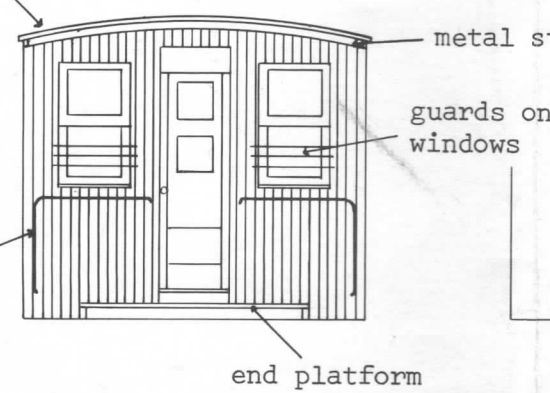
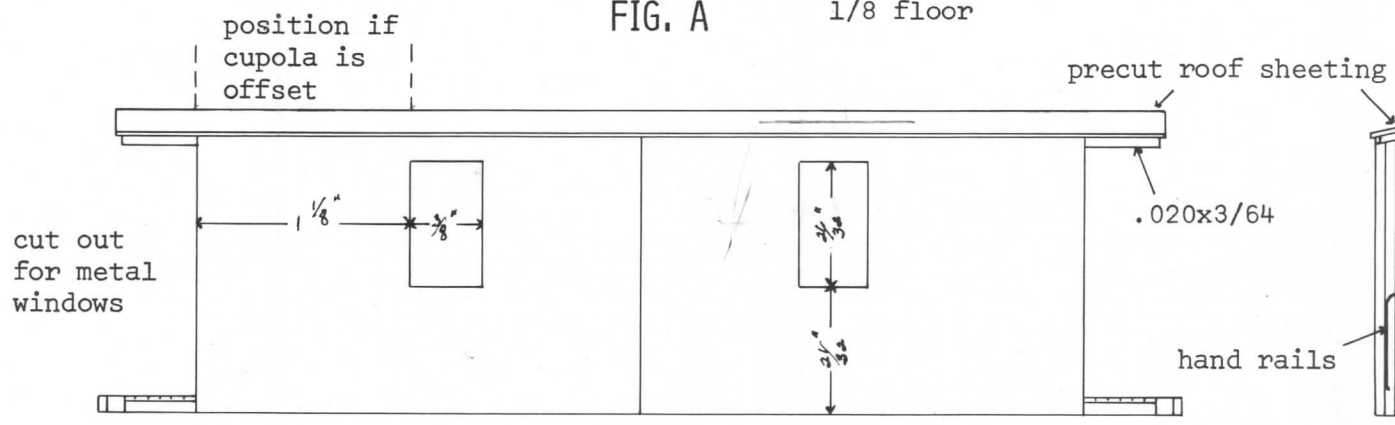
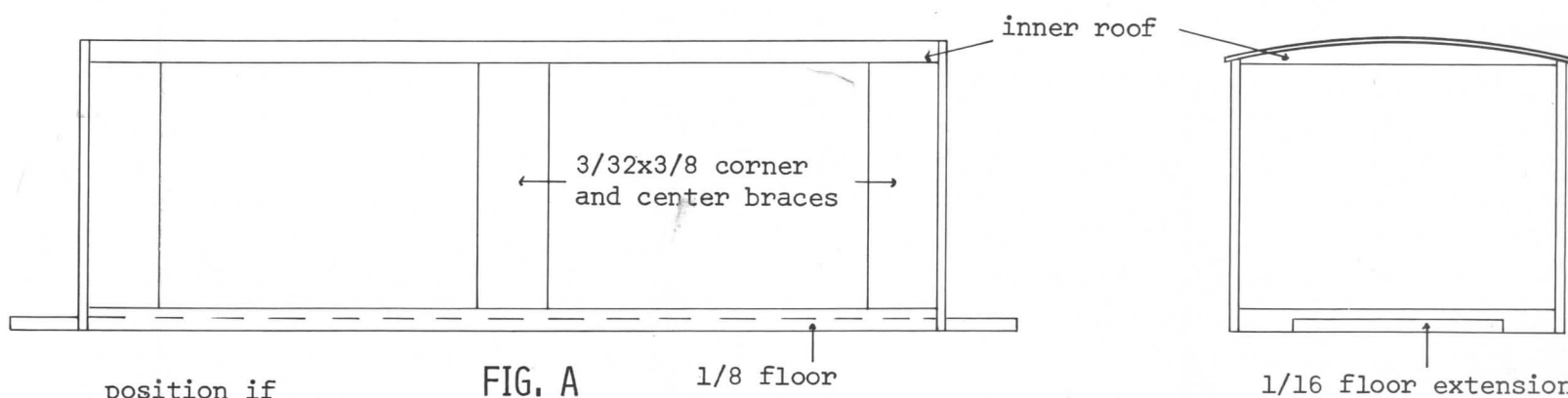


Quality
craft

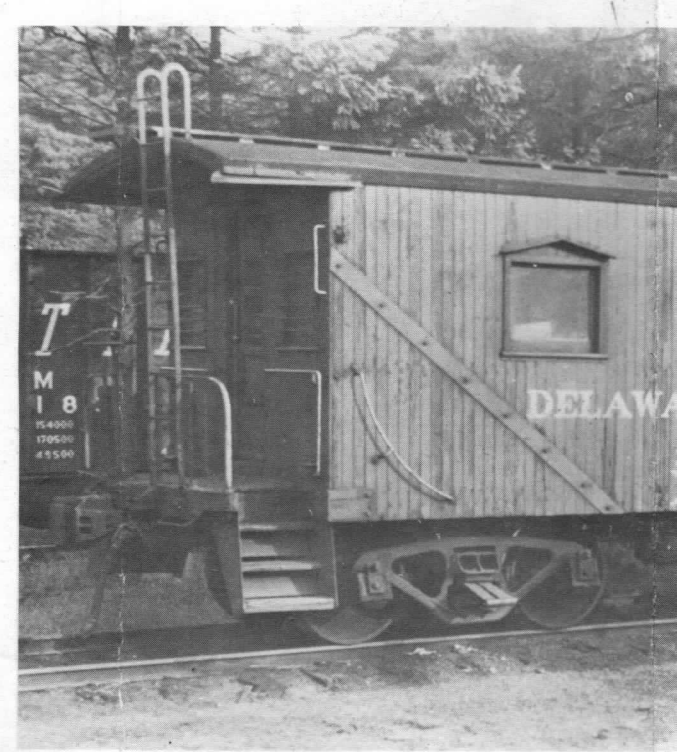
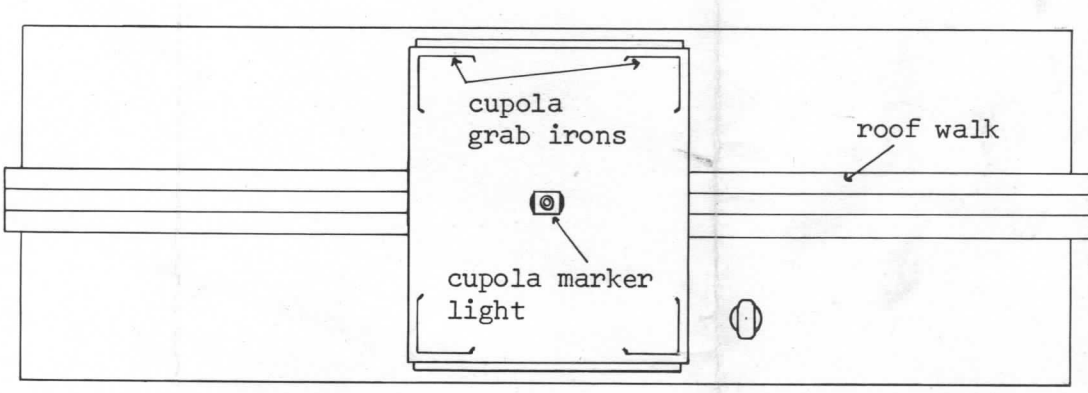


COLOR CODE

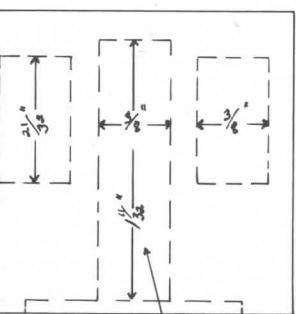
.012x1/32	red
.012x3/32	blue
.020x3/64	yellow
.025x3/64	green
3/64x5/64	white
1/16x3/32	orange

WIRE SIZES

#26	fine	.01594 #78
#21	medium	.02846 #69
#18	heavy	.04030 #56

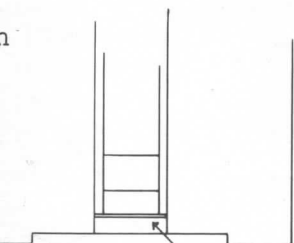


218
259
261
276
295



cut out for door

trip



3/64x5/64
filler under
door casting

cupola roof sheeting

cupola

rails

This caboose kit may be built in one of three ways. The plans show the car as originally built, having a center cupola. It may be built with an offset cupola as shown in Fig. B, or may be updated about 20 years, merely by using paper to cover the center windows on the sides and ends of the cupola.

1. Glue the 1/16 floor extension strip in the bottom of the precut floor. Sand smooth after dry. Glue the scribed sides together, Fig. B. Use two coats of Scalecoat Sanding Sealer on all parts, including the stripwood, using 00 steel wool between coats.

2. Fig. A, cut across the bottom of the precut end sheets between the two slots so that the ends will sit on and around the floor extension. Cut out for the doors and windows after filing all castings so that a tight fit results. The doors have gluing tabs on each side and are glued to the inside. Fig. B, use 3/64x5/64 to fill in under the door casting and then place the ends, Fig. A, followed by the four corner braces, the inner roof between the ends followed by the center braces. Sand the top of the end sheets to match the inner roof contour. Cut the assembled sides to length, mark the window openings, Fig. B, and glue the metal windows in place. Glue the sides on, flush with the bottom of the floor and sand the top edge to match the inner roof contour. Cut two end platforms to length, Fig. B, glue on top of the floor extension and sand off even with the end of the floor extension. Check the width of the steps to sand to the correct length.

3. Glue the precut roof sheet in place with even overhang on the sides and the ends. Cut 020x3/64 to length and place the top of the side extension strip, Fig. B. These are 1/32 shorter in length on each end than the length of the roof sheeting. The roof overhang over the sides should be sanded so that only 3/64 overhangs the sides, Fig. A&B. File to length the metal end strips and place under the roof sheeting between the ends of the side extension strips.

4. Place the bolsters as shown in Fig. D. After dry, drill holes for truck mounting screws. Cut the undersills from 1/16x3/32 and place as shown in Fig. D. Place the following; air reservoir, triple valve, air cylinder, #18 train line and #21 small pipes. Place the end sill casting, Fig. C&D, and the coupler pockets of your choice. Glue the step castings on the side of the floor extension, up against the end platform overhang. Form the end hand rails and the guards over the end windows from #26 wire, Fig. B.

5. File the ends of the cupola castings on a 45° angle and glue together. Place the precut cupola roof sheet, 012x3/32 awning, Fig. C, and place the finished cupola in either the center or offset position. Cut roof walk supports from 025x3/64, place on the bottom of the roof walk and then glue to the roof. Place the flat wire braces under the ends, Fig. C. Add the following; #26 wire grab irons on the cupola roof, Fig. E, smoke stack, and the marker light on the roof. Form the end detail using #21 wire. Cut end ladders to length and glue in place. Ladder extension castings form the bend at the top. The ladders are on the outer side of the end detail. Glue on the brake wheels and the end grab irons. Cut trim from 020x1/32 for above the side windows, Fig. C, the side hand rails from #26 wire and place the marker lights.

6. Paint the caboose with #14 Scalecoat Caboose Red, decal and overspray with Scalecoat Dull or Gloss Finish. Should you find any part missing or broken, write to Quality Craft Models Inc., 177 Wheatley Ave, Northumberland, Pa. 17857 for free replacement.

$$\frac{5}{8} + \frac{1}{4} = \frac{20}{8} + \frac{2}{8} = \frac{22}{8} = 2\frac{1}{2}$$



$$\frac{4}{8} + \frac{4}{8} = \frac{8}{8} = 1$$