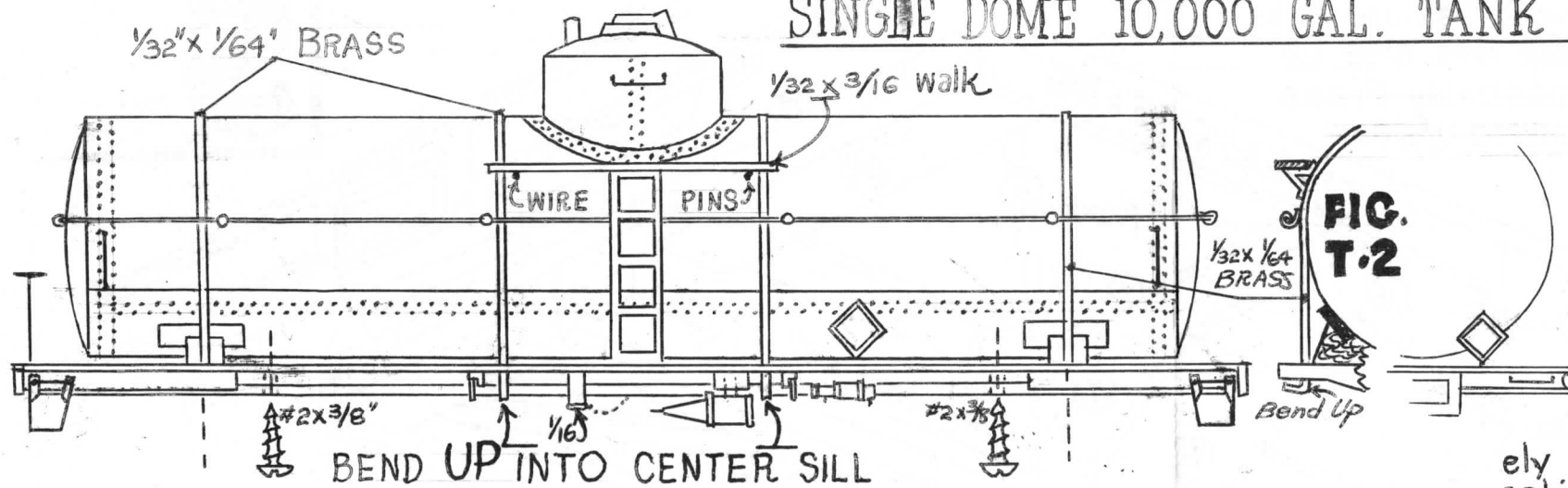
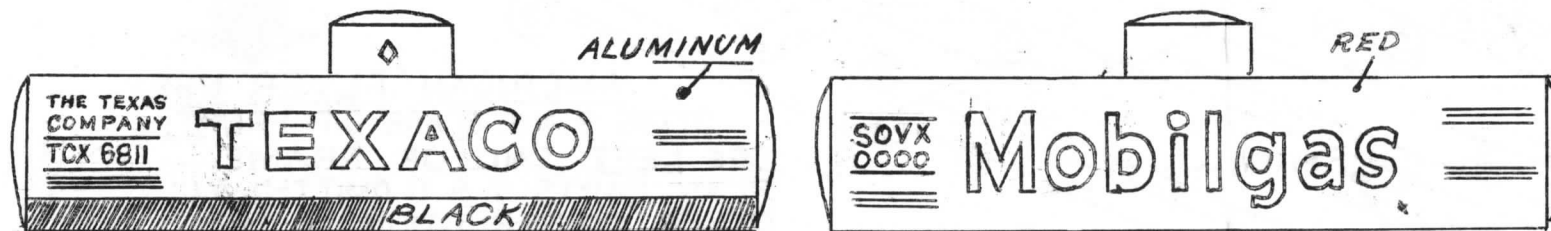


# SINGLE DOME 10,000 GAL. TANK CAR



Read instructions first!

Take your time with this kit. If care is used, you will have a model to be proud of. In order to keep down the cost of a limited run kit in this gauge, some work has been left for the modeler. We are definitely interested in comments and suggestions, keeping in mind that some types of improvements do raise the cost of production. Which type of kit do you prefer? Any new kits, especially of tank cars?



U.T.L.X. IN DECAL ENVELOPE...LOOK FOR IT!

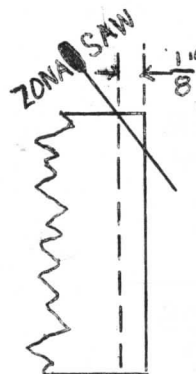


FIG. T-1

DRAW PENCIL LINE  $\frac{1}{8}$ " IN FROM EACH END, AROUND TANK. CUT & SAND A 'BULGE' BACK TO THIS LINE, LEAVING FULL LENGTH IN CENTER. (SEE FIG. T-1) —'RIVET' WITH CLOCK GEAR, OR SCRIBE, ON DASHED LINES, OF ALL WRAPPERS (A tip: when embossing rivets, first rub cement into holes, then lift immediately) CUT OUT & APPLY, USING WHITE GLUE (Borden's, Elmer's, etc.) MAKE SURE CENTER LINE OF RIVET IS ON CENTER, TOP OF TANK. PRICK & WORK OUT AIR BUBBLES. INSERT DOME BEFORE APPLYING DOME WRAPPER & COLLAR. HANDRAILS AND DOME PLATFORM MAY BE ATTACHED BY STRAPS SOLDERED TO TANK BANDS IF PREFERRED (See Fig T-2) —THE HAND-RAILS SHOULD BE SOLDERED TOGETHER IN EACH END POST. WE SUGGEST THE LADDERS BE GLUED UNDER DOME PLATFORM ONLY AND SOLDERED TO HANDRAILS....THIS ALLOWS FOR DISASSEMBLY. —TANK IS HELD TO FRAME ONLY BY TANK BANDS,

BENT AS SHOWN, AND 2  $\#2 \times \frac{3}{8}$  WOOD SCREWS. NOTE: MAKE CERTAIN TANK IS SQUARE & UPRIGHT ON FRAME BEFORE DRILLING FOR SCREWS, SIGHT IT! APPLY SEALER OR THINNED SHELLAC TO ALL WOOD & PAPER PARTS BEFORE PAINTING, EXCEPT DOME PLATFORM & RUNNING BOARDS, WHICH SHOULD SHOW GRAIN.

IF ANY SHORTAGE, OR IF YOU SPOIL A PART, WRITE TO: REGAL KITS, 706 COLFAX, BENTON HARBOR, MICH.

REGAL kit

WR 3-61

S

each

10/32 sq.

PADS  $3/16 \times 1/32 \times 3/8$

A diagram of a simple beam bridge. It features a horizontal base line. Two vertical lines rise from the base, forming a triangular truss structure. A curved line representing the bridge deck spans the gap between the two vertical supports. The truss structure is composed of several interconnected lines forming a series of triangles.

✓ Read first!

Diagram illustrating the vacuum brake system components and connections:

- TANK**: The source of vacuum, shown on the right.
- VALVE**: A control valve located between the tank and the brake wheel.
- TO BRAKE WHEEL**: The line connecting the valve to the brake wheel on the left.
- 8**: A circled number indicating a specific component or connection point on both the tank and the brake wheel lines.

WR  
3-61



a  
REGAL  
kit

Property of  
NASG Inc.

