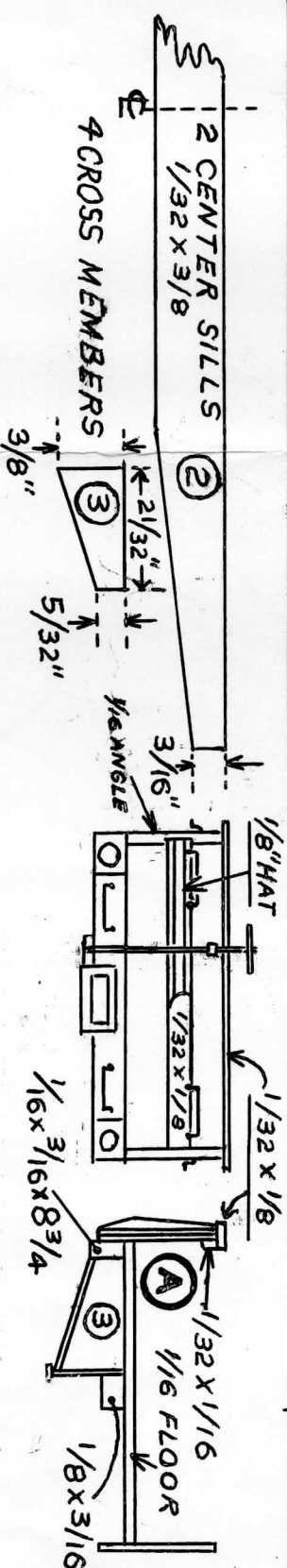
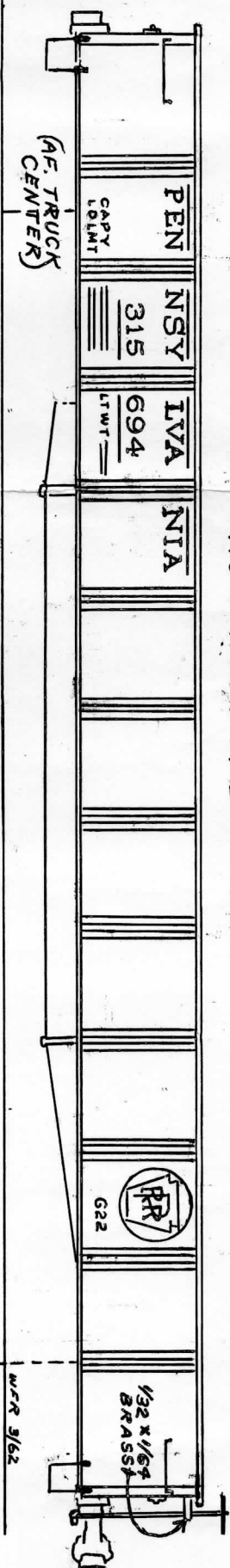
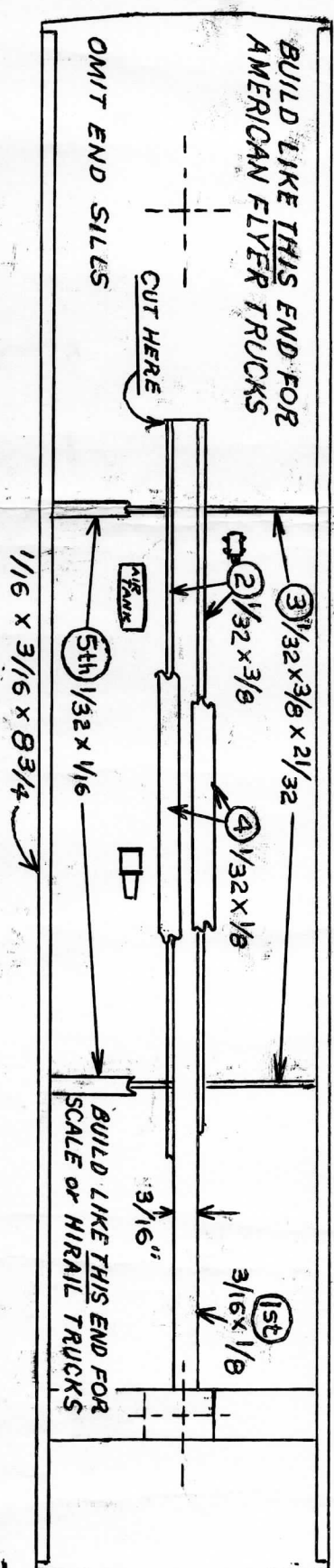


1. Use side view to glue 1/8" Hat to sides. Taper as shown in end view. Trim flush with top and bottom.
2. Glue 1/16 x 3/16 x 8 3/4 along end of floor, leave equal space (about 1/32") at each end. See sketch A and side view.
3. Cement sides to floor, leaving 1/32" of above 3/16" piece showing BELOW sides.
4. Trim ends to fit between the sides, and glue in place.
5. Corner angles are 1/16" angle, 22/32" long. Then glue a 1/8 x 1/32" between these corner angles. Cover this with 1/8" Hat, overlapping each corner angle slightly. See end plans.
6. Cement 1/32 x 1/16 all around the inside, just flush with the top. See A. Then top this with a 1/8 x 1/32. This makes up the top flange.
7. Now turn car bottom up. Cement end sills in place. (For AF, see note 11). Trim each end of bolster to fit between the 1/16 x 3/16 pieces, then glue to floor.
8. Build up center sill in sequence shown by circled numbers shown in bottom view. Glue a short piece of 1/32 x 1/16 across center sills in line with cross members (5).



9. Drill fine holes for brake staff and grabirons in end sill. Drill holes in sides and ends for grabirons. Note that the end grabs ARE mounted up-side down.
10. When drilling holes for trucks, make certain hole is not drilled at an angle.
11. For American Flyer trucks, make both ends as shown on the left end of floor plan. Omit the end sill, and cut the center sill short as shown. The trucks must be mounted with small nut and bolt up through floor.

COLOR - BOX CAR RED

