

Text instructions S scale Citrus Shed

Thank you for purchasing our S scale Citrus shed, and thanks to John Gibson, Gerry Evans and the others involved with the NASG. The S scale version of this Citrus Shed became a reality because of their encouragement and help. I hope you enjoy the model.

Before beginning the assembly of your kit, look at the parts inventory drawings and identify the parts panels in your kit.

To make parts identification easier they are cut so they stay in their respective panels and do not shift out during transportation and handling. Because of the varying hardness (density) of the wood, you may need to assist the release of some of these parts by drawing the blade down the laser cut groove. An Xacto knife (or equivalent) with a sharp #11 blade is very useful in helping you to do this. When the part is removed from the panel, carefully sand the edges to remove any roughness or soot left from the laser. Finally, before you get started building you will need some wood glue and a flat surface to build on.

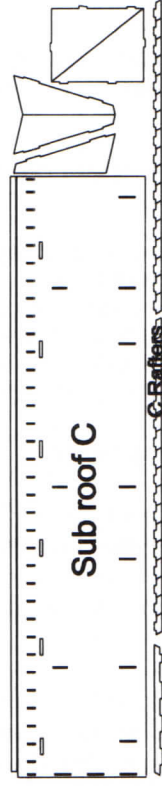
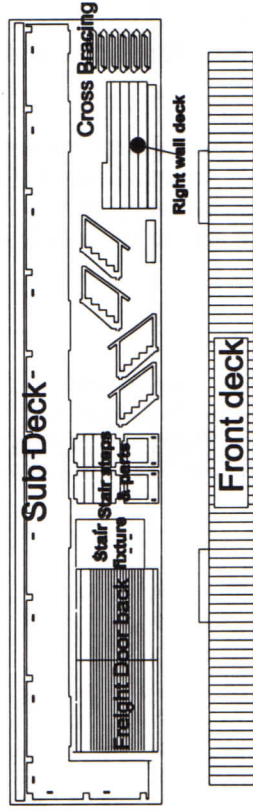
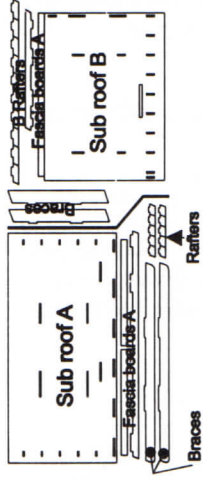
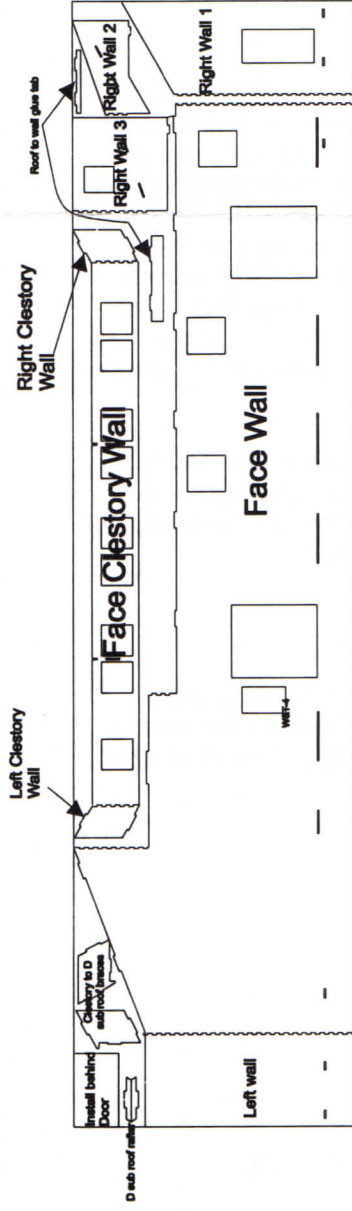
The following are recommendations to help with the assembly.

1. Because there are 4 roofs on this model with a significant amount of rafters and fascia board details, I want to suggest that you consider building the roof sections without glue at first. Then test fit the roof to the wall. During the test fitting pay close attention to the direction of the rafters to make sure they are aligned in their proper orientation. The proper orientation is also illustrated in figures 4. Through 8.
2. **About choosing paint and painting methods.** Using a primer minimizes the need for several coats. By minimizing the amount of paint applied, you preserve some of the natural wood grain texture. I have painted my models utilizing all 3 of the major techniques; spray can paint, air brush, and hand quill brush. I have had successful results utilizing all three of these methods at one time or another. One of the main components of successful paintwork can be attributed to the paint. A well-pigmented paint is preferable. What is most desired when painting a miniature model is minimal thickness of the paint with maximum coverage. Most of the model railroad paint manufacturers understand and specialize in producing paint that is well pigmented. I am referring to paint that would typically be used on a railroad car or locomotive. The car and locomotive colors can be used and they work well. They can be mixed to achieve a lot of great colors for structures.
3. Paint the parts in the trim and window panel. After you have painted them in their secured parts panels, remove the parts one by one and paint the edges. Keep in mind that the trim parts are shown in the assembly drawings relating to position on the model. After the parts have dried, remove the adhesive backing and stick the trim parts to the walls as shown.

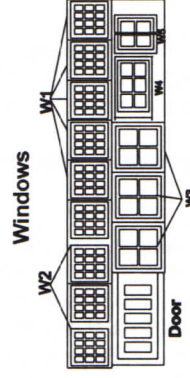
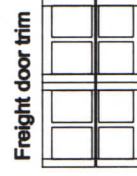
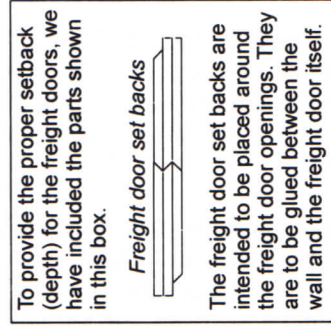
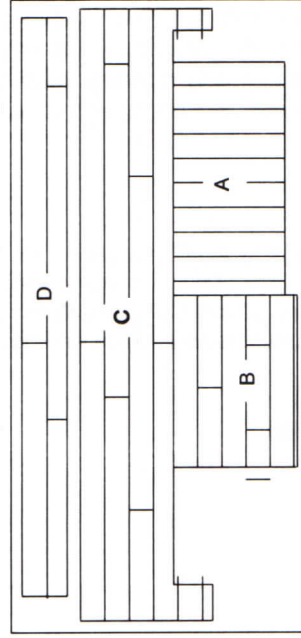
I hope you enjoyed building the Citrus Shed. My family and I are committed to your satisfaction and we thank you for choosing one of our Showcase Miniatures kits. To keep up with what is new and to see our complete line of models, please visit our web site at www.showcaseminiatures.com. You will also find tips and advice from other model builders and how they super detail some of our kits.

Sincerely Joe Warren

Parts and panel identification sheet for the Citrus Shed



Pressure sensitive (adhesive backed) rolled roofing sheets



Note: installing windows
Additional material extending beyond window outline allows for proper set back and provides surface area for glue.

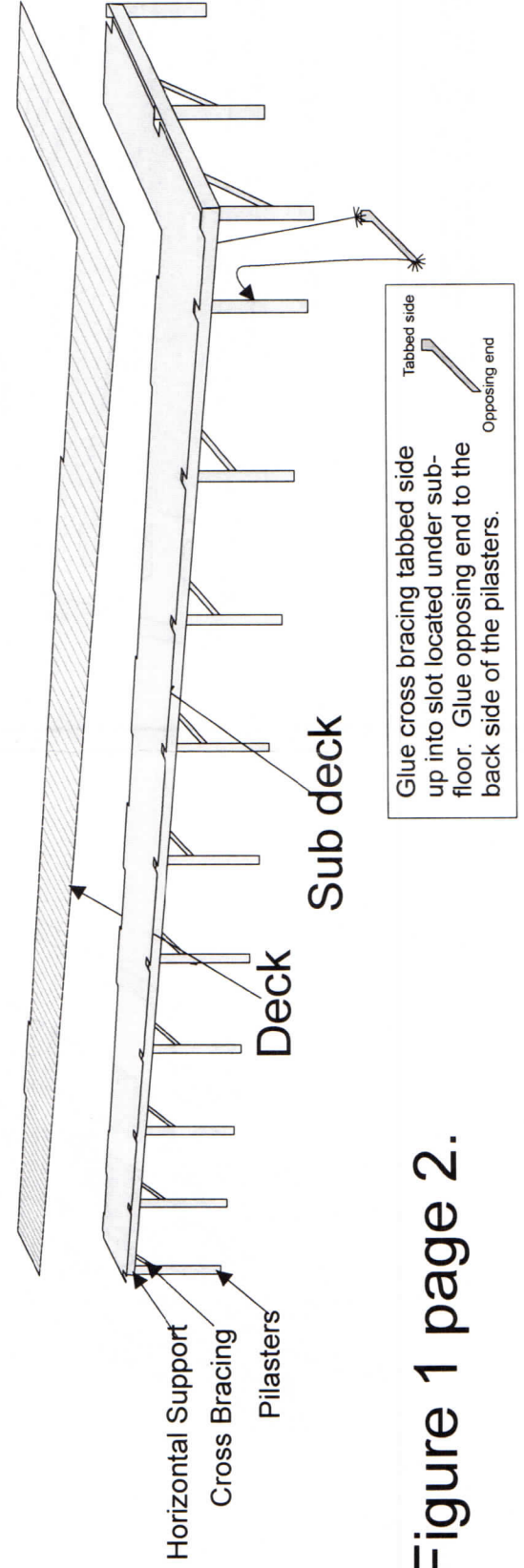
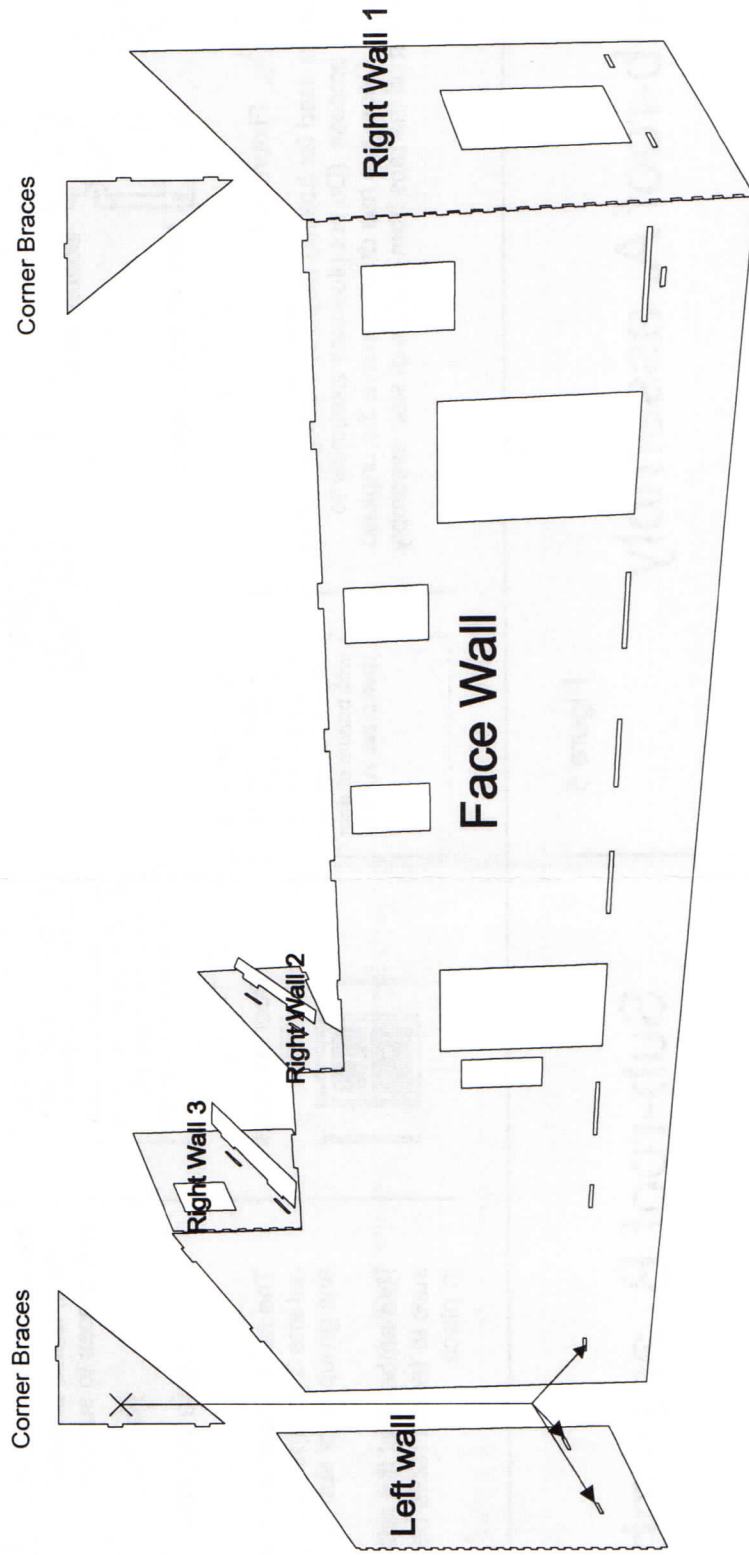


Figure 1 page 2.

Figure 2

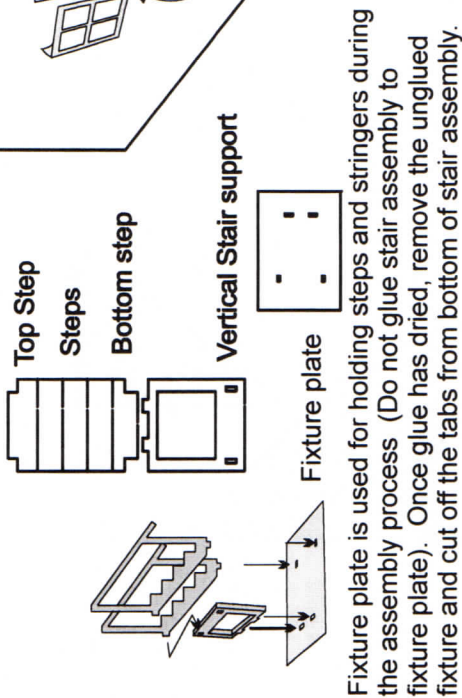


Figure 3

Freight Doors

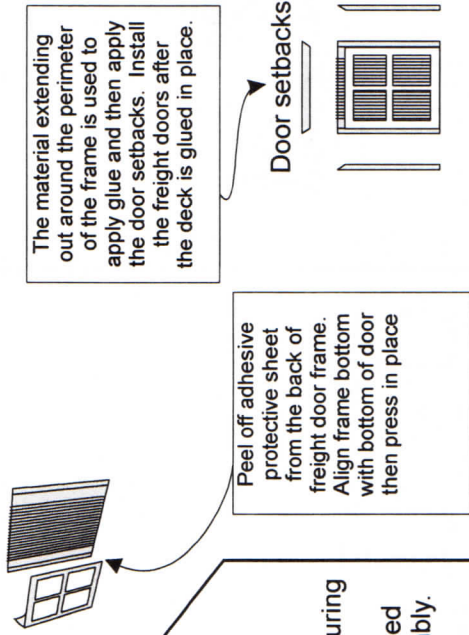
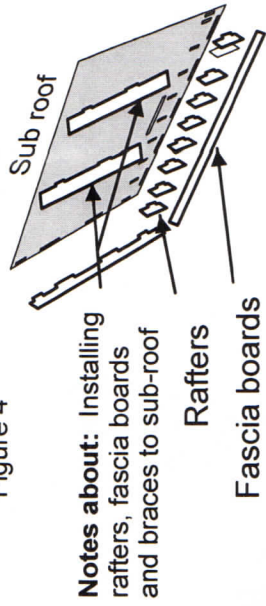


Figure 4



The rafters have been broken down and cut into 3 groups. Group A for sub roof A and group B for sub roof B and group C

Remember that the rafters are directional. Be sure to test fit roofs before permanently gluing in place.

Figure 5

Sub-roof A. assembly

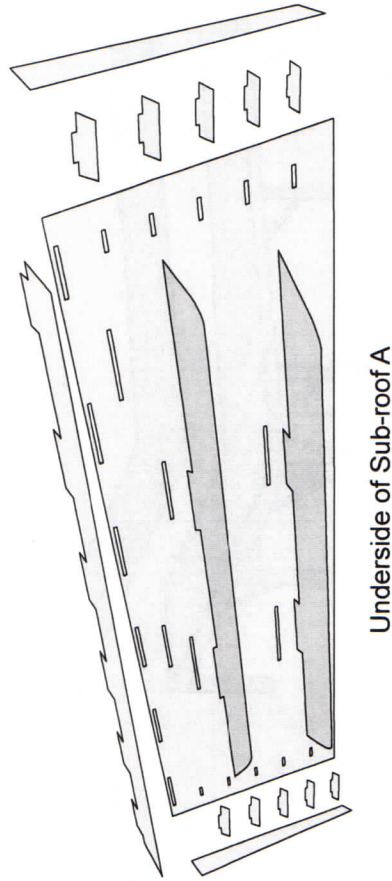
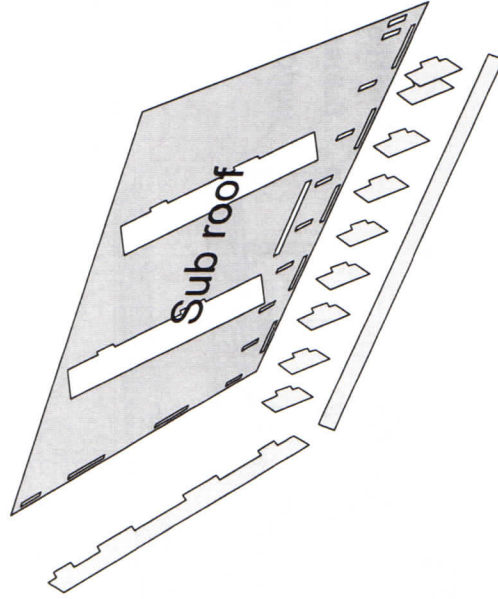
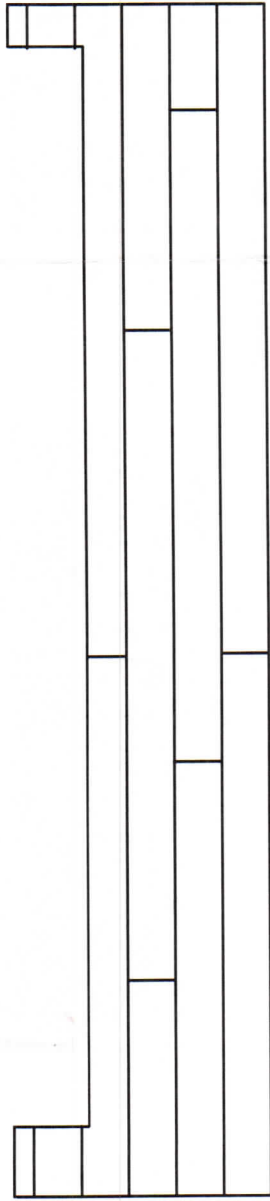


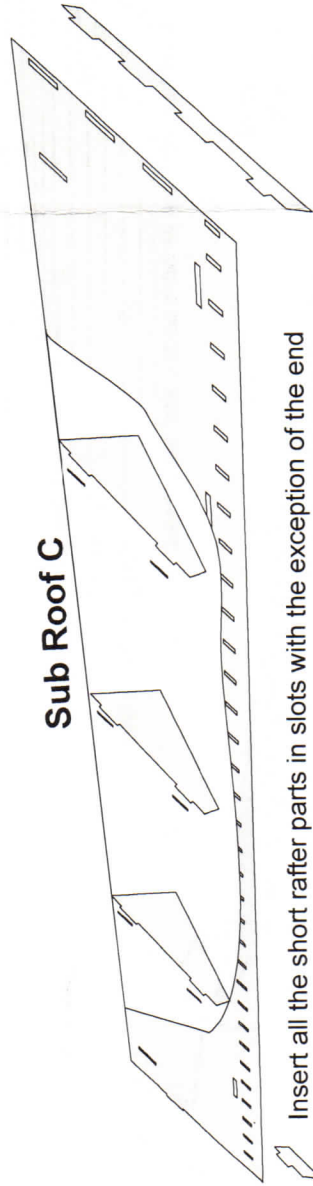
Figure 6

Sub-roof B. assembly



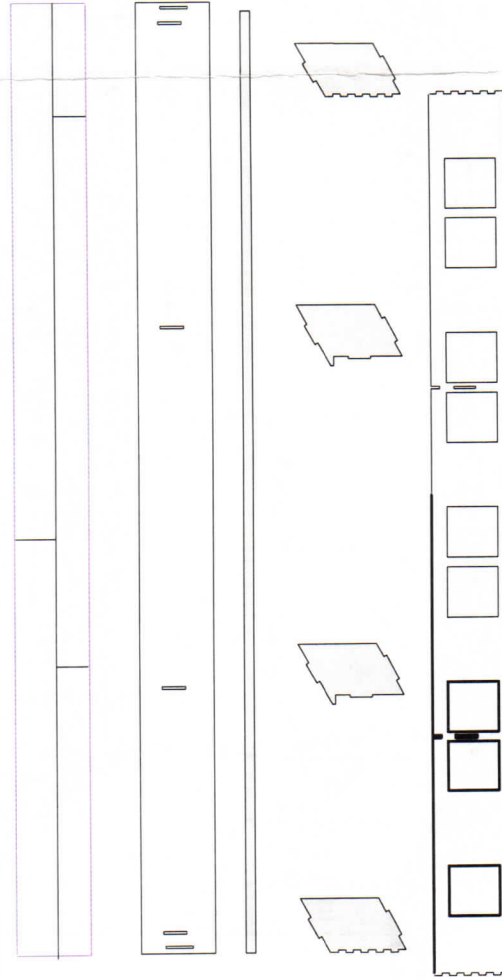


Remove the adhesive protection from the back of the roofing paper then carefully align it in its place. It is best to do this after the structure has been assembled.



Insert all the short rafter parts in slots with the exception of the end

Figure 7.



Note: Gluing front fascia board
Apply glue lightly across the mating edge of the fascia place it under the roof. The protruding points on the 2 support brackets keep it from bowing in. Slide the long fascia board side to side until it is aligned between the two outer fascia boards then hold in place until the glue has set.

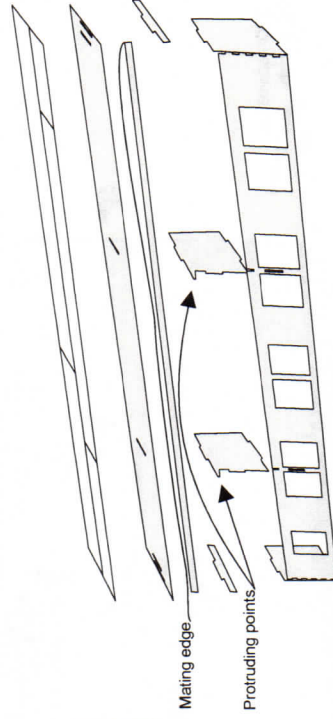


Figure 8.

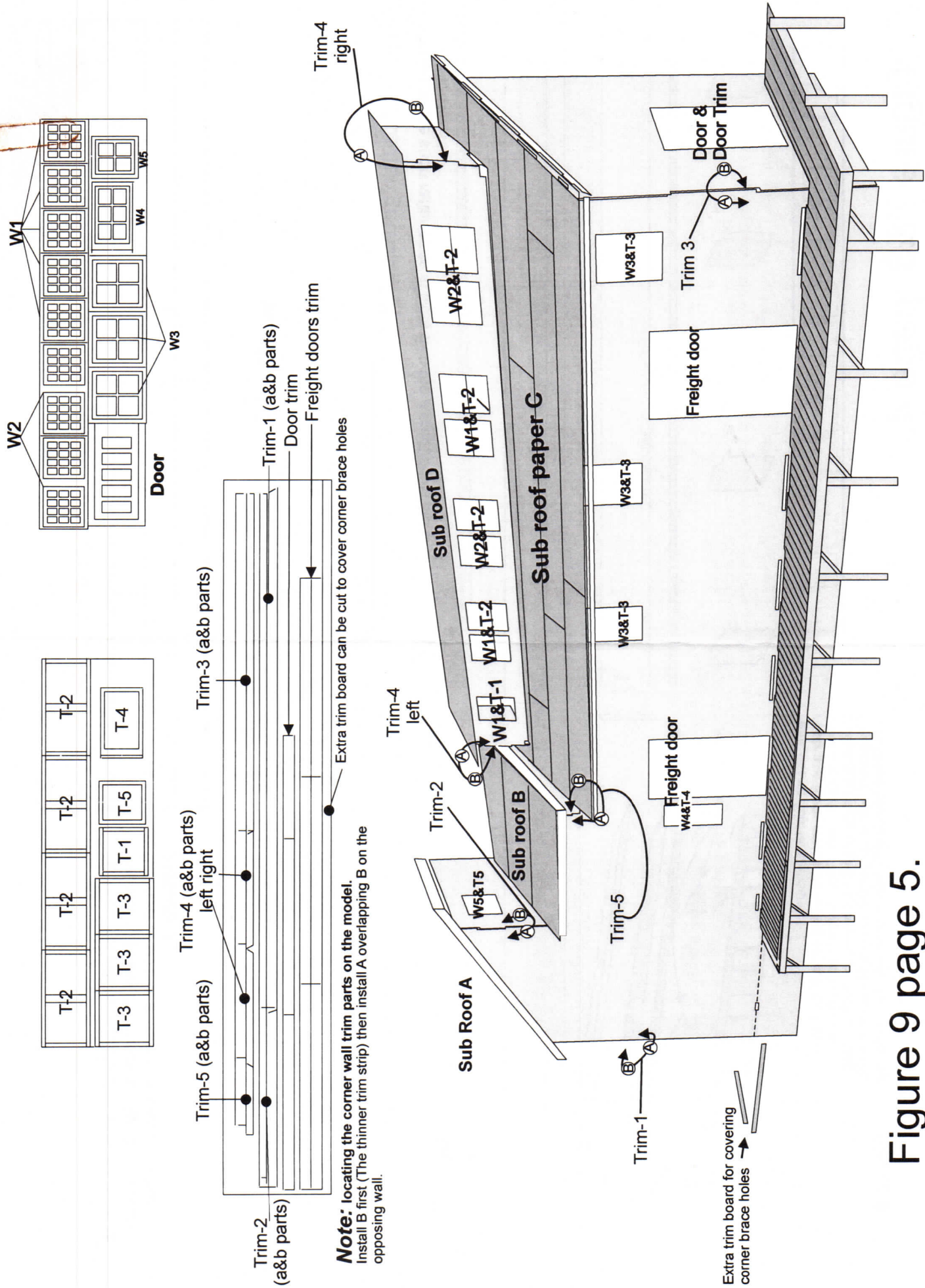


Figure 9 page 5.

