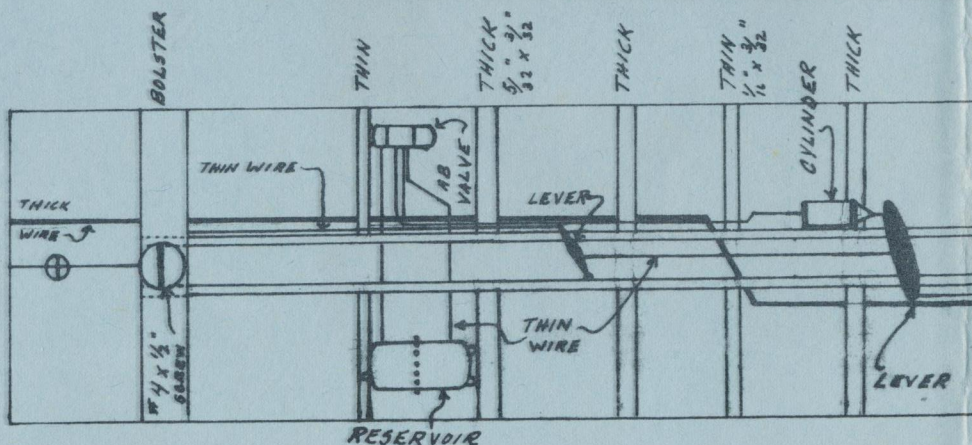
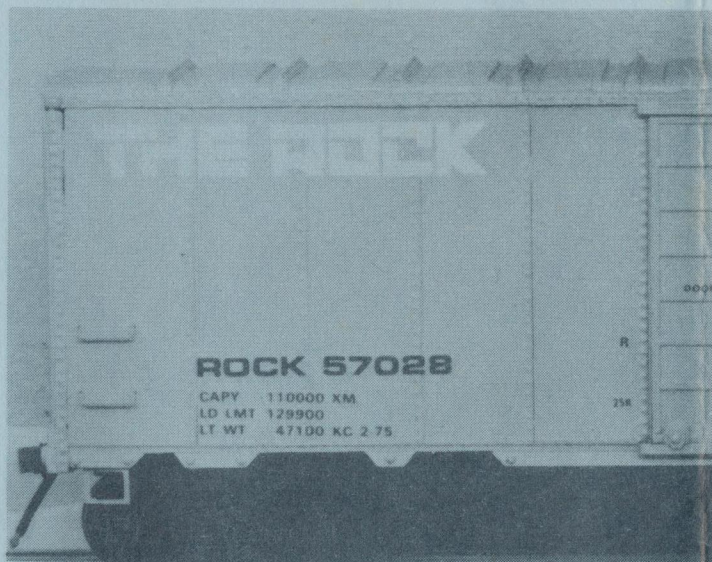


!#@*?! TRAIN STUFF

P.O. BOX 195
175 MONMOUTH BLVD.
OCEANPORT, N.J.
07757

PAINTING INSTRUCTIONS- The cast styrene parts have lacquer paints such as Floquil or Scalecote use base layers of paint to get the most detail. Approximate GN blue, 1 part RR-11 Reefer white.

DECAL INSTRUCTIONS- All surfaces should have a gloss these decals. Add a drop of liquid detergent (Lux,



Styrene Side Boxcar W/Plastic Ends

1. Unpack and inspect your kit against the parts list. Read the instructions thoroughly and familiarize yourself with the sequence of assembly. If the plastic parts are bent or warped they may be heated until soft under a 100 watt lightbulb and then flattened until cool under a heavy book. Sand and seal the wood pieces before assembly. Use either an acrylic finish (Krylon) or sand-sealer for this purpose.

2. Remove all the flash from the castings with a file, emory board, or sanding block. Check for any air bubbles we might have overlooked and repair them with epoxy or filler compound (such as Green Squadron).

3. Bevel the top (roof) corners of the end blocks so that the sides fit flush against the end blocks. Cement the sides to the end blocks to form the body of the car. Assembly can best be done upside down on a flat surface. Check to be certain that all corners are square.

4. Add the detail to the styrene sides. This would be the grabirons (use a #78 drill bit for these holes), ladders, etc. Add details to the styrene ends- Ladders, brake wheels, etc. Refer to the center page for a guide.

5. Cement the roof to the car body making the overhang on the ends equal. Check to be sure that the boxcar ends fit into the roof correctly.

6. Attach the styrene ends with detailing on them to the end blocks. The upper edge should fit into the overhang of the roof. The outside edge of end should cover the car sides.

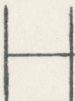
7. Cut the floor the same length as the sides. Attach the scale bolster or in the case of AF, the washer, to the floor. Pre-drill the centersill (if you are adding underbody detail) before installation. (Use #78 drill bit for thin wire holes and #1/32 for thick wire.) Cut the centersill to length and glue it to the middle of the floor. Trim away any excess that interferes with AF trucks. Use 5/32" x 3/32" (yellow) for the six small crossbraces. Use 1/16" x 3/32" (orange) for the eight

large crossbraces. Cement these and the brake cylinder, reservoir, AB valve, and levers with the appropriate piping. Use thick wire for the main brake line and the thin wire for the other. These wires and components apply only if you choose to include the underbody detail.

8. Scale and Highrail trucks- Drill the holes for the screw (5/64") and couplers (1/6").

9. American Flyer- Drill holes for the screws 5/64" in the center of the bolster (washer).

10. Paint the underframe black and then cement the floor to the body keeping the end of the floor flush with the end of the body. Now you can attach the trucks and couplers.

11. Drill the holes for the sillstep (.035" or 1/32"). Cut the steps to look like this  and file the rough edges smooth. Paint these black and insert into the car body

Construction Tips- When drilling into the styrene sides be sure that your drill bit is sharp. Take your time- go slowly. The

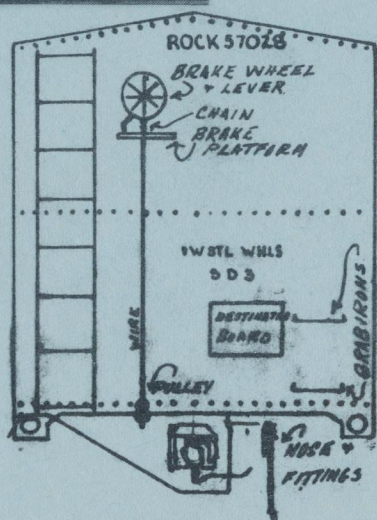
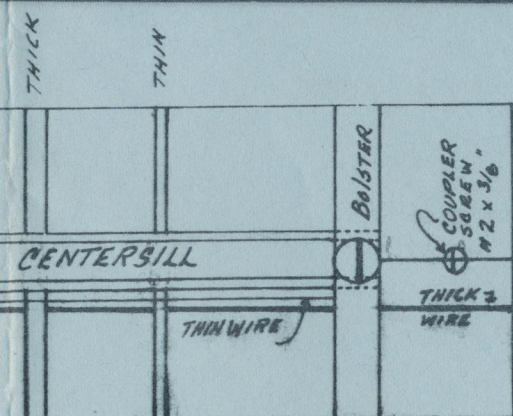
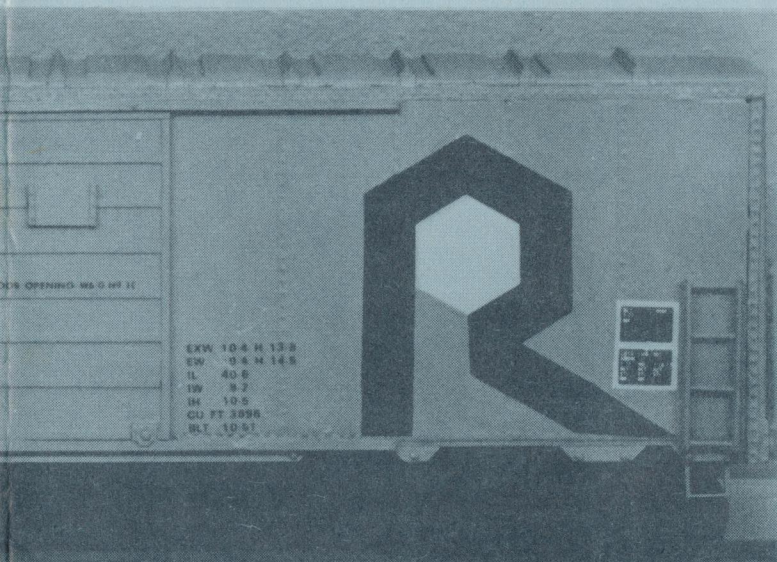
same holds true when filing the cast styrene parts. Use sharp clean tools and take your time. It will result in a nicer finished kit.

When cementing styrene to styrene or to styrofoam surfaces use five minute epoxy. When cementing metal or wood to styrene use a contact cement (Walthers' Goo) or epoxy. When cementing wood to wood or styrofoam to wood use white glue (Elmers').

HAVE FUN...

e been given a light coat of primer. If you use
 carrier coat to prepare the sides first. Use thin
 te collar match: ROCK ISLAND BLUE, 2 parts RR-56

oss finish. Use solvaset diluted with H_2O for
 , etc.) to the decal soaking water.



PARTS LIST

#24909 ROCK Riveted Side Boxcar

Qty.	Part#	Description	Price
2	T053	40' riveted sides	\$2.00
2	T027B	End blocks	0.25
1	T054	Roof, 40' AAR	1.00
2	T055	Ends, dreadnaught	1.00
3	T015	Ladders, 4 rung	0.65
1	T033	Ladder, long	0.25
8	N381S	Grabirons	0.10
2	T005	Destination boards	0.05
1	L116	Ajax brake housing	0.09
1	L115	Brake wheel w/ levers	0.15
1	T035	Brake platform, high	0.10
1	L021	Brake pulley	0.25
1	T031	Floor	1.00
1	L019	Reservoir	0.12
1	L018	Cylinder	0.15
1	L020	AB valve	0.08
1	T009	1" piping	0.10
2	T012	1 5/8" piping	0.10
1	N370	Grooved centersill	0.25
1	N041	5/32" x 3/32" yellow	0.12
1	N013	1/16" x 3/32" orange	0.06
2	T014	Bolster, AF	0.10
2	N550	Bolster, Northeastern	0.20
2	K005	Kadee couplers	1.10
2	A202	Scale trucks, Bettendorf	2.95
2	A203	Highrail trucks "	2.95
1	M013A	Air hose and fittings	0.75
2	A051	AF trucks	4.00
2	D002	ACI labels	0.10
1	H540B	ROCK decals	1.55
1	M24909	Instruction booklet	1.00